


VORTAC RAP <b>112.3</b> Chan <b>70</b>	APP CRS <b>322°</b>	Rwy Idg <b>8701</b> TDZE <b>3160</b> Apt Elev <b>3204</b>
--	------------------------	---

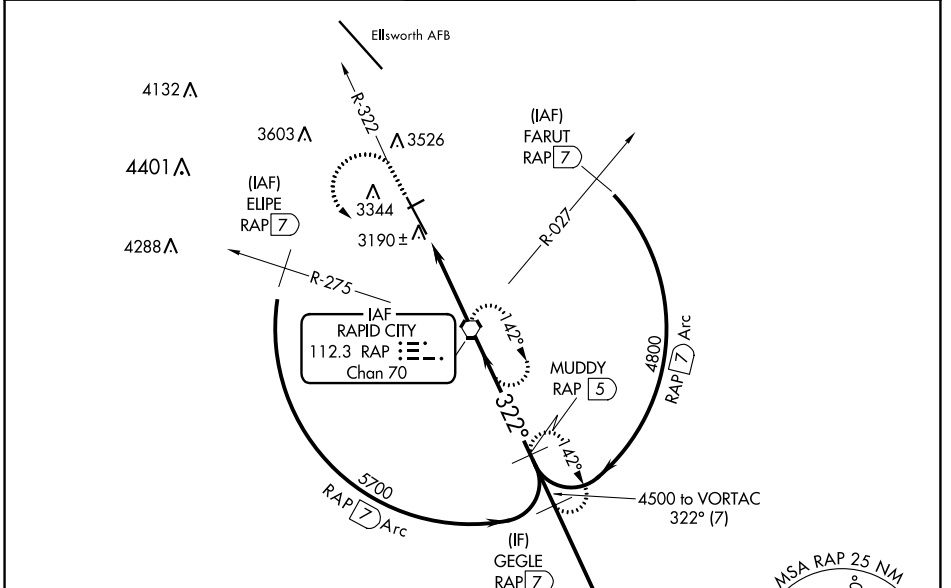
# VOR or TACAN RWY 32

RAPID CITY RGNL (R.A.P)

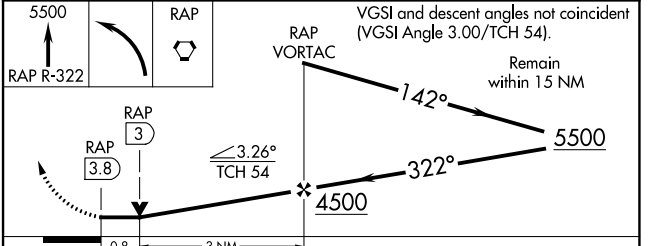
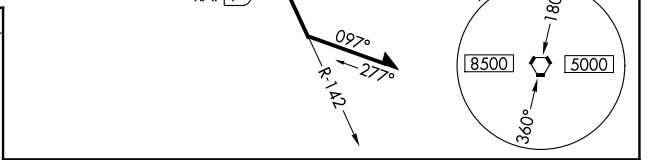
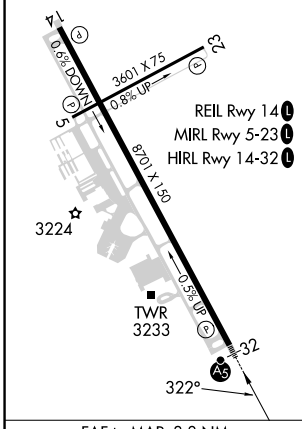
**⚠** For inoperative ALS, increase S-32 all Cats visibility to 1 SM.

**MALSR**  
  
**MISSED APPROACH:** Climb to 5500 on RAP R-322 then left turn direct RAP VORTAC and hold. (TACAN aircraft continue on RAP R-142 to MUDDY/RAP 5 DME and hold SE, RT, 322° inbound.)

ASOS <b>118.525</b>	ELLSWORTH APP CON ★ <b>119.5 259.1</b>	RAPID CITY TOWER ★ <b>125.85 (CTAF) 0 257.8</b>	GND CON <b>121.9</b>	UNICOM <b>122.95</b>
------------------------	---	--	-------------------------	-------------------------



ELEV 3204	<b>D</b>	TDZE 3160
-----------	----------	-----------



CATEGORY	A	B	C	D	E
S-32	3440/40 280 (300-¾)				
<b>C</b> CIRCLING	3660-1 456 (500-1)	3840-1 636 (700-1)	3860-1¾ 656 (700-1¾)	3940-2¼ 736 (700-2¼)	3960-2¾ 756 (800-2¾)

NC-1, 13 JUN 2024 to 11 JUL 2024

NC-1, 13 JUN 2024 to 11 JUL 2024