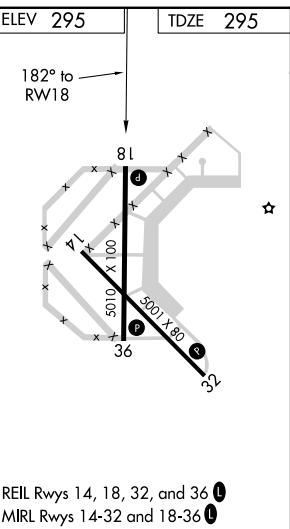
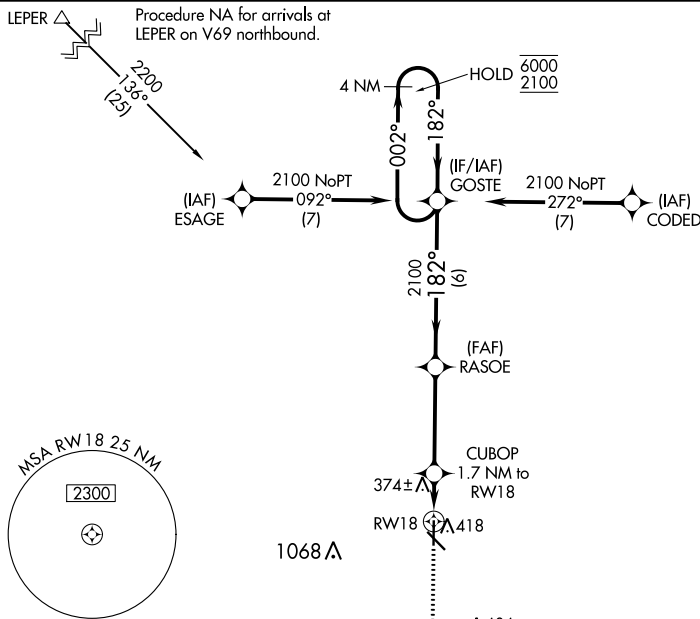


WAAS CH 78315 W18A	APP CRS 182°	Rwy Idg TDZE Apt Elev	5010 295 295
--	------------------------	-----------------------------	---

RNAV (GPS) RWY 18

MALDEN RGNL (M.A.W)

RNP APCH-GPS.		MISSED APPROACH: Climb to 2100 direct DROSS and hold.	
▼ For uncompensated Baro-VNAV systems, LNAV/VNAV ▲ NA below -15°C or above 54°C.		AWOS-3PT 119.825	MEMPHIS CENTER 133.65 292.15
		GCO 135.075	UNICOM 122.8 (CTAF) 0



REIL Rws 14, 18, 32, and 36
 MIRL Rws 14-32 and 18-36

ELEV 295	TDZE 295				
2100 DROSS	RASOE	GOSTE	4 NM Holding Pattern		
CUBOP 1.7 NM to RWY 18	2100	6000	2100		
1 NM to RWY 18	880	2100	GP 3.00° TCH 40		
1 NM	0.8	3.8 NM	6 NM		
CATEGORY	A	B	C	D	
LPV DA		495-1	200 (200-1)	NA	
LNAV/VNAV DA		545-1	250 (300-1)	NA	
LNAV MDA		640-1	345 (400-1)	NA	
<input checked="" type="checkbox"/> CIRCLING	720-1 425 (500-1)	800-1 505 (600-1)	800-1½ 505 (600-1½)	NA	

NC-3, 13 JUN 2024 to 11 JUL 2024

NC-3, 13 JUN 2024 to 11 JUL 2024