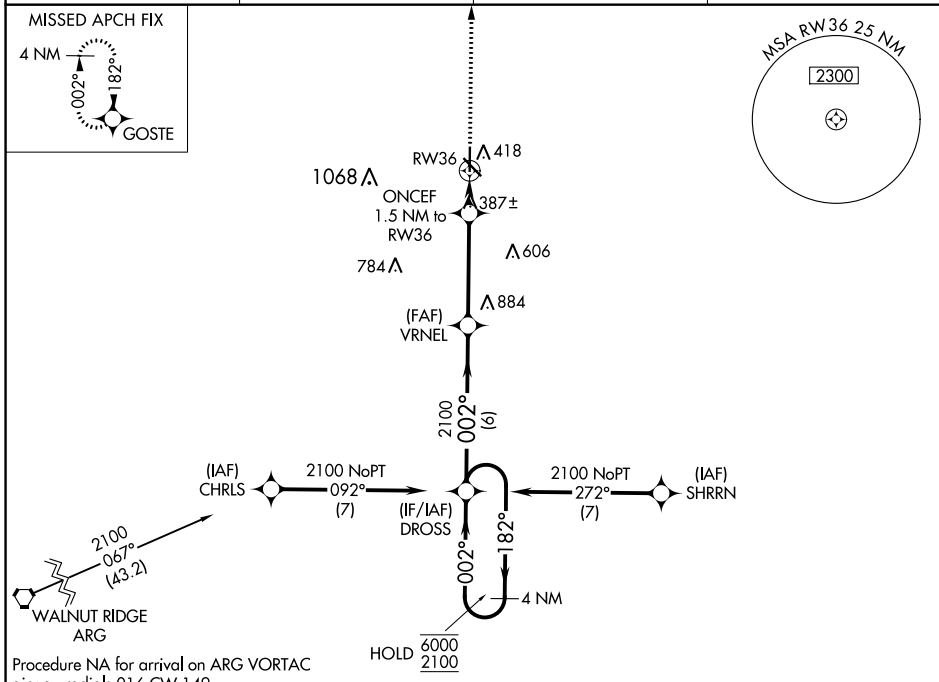


WAAS CH <b>93815</b> <b>W36A</b>	APP CRS <b>002°</b>	Rwy Idg <b>5010</b>
		TDZE <b>295</b>
		Apt Elev <b>295</b>

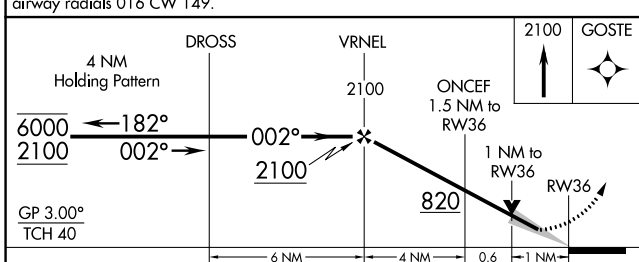
# RNAV (GPS) RWY 36

MALDEN RGNL (M.A.W)

RNP APCH-GPS.		MISSED APPROACH: Climb to 2100 direct GOSTE and hold.	
<p>▼ For uncompensated Baro-VNAV systems, LNAV/VNAV NA below -15°C or above 54°C.</p>			
AWOS-3PT <b>119.825</b>	MEMPHIS CENTER <b>133.65 292.15</b>	GCO <b>135.075</b>	UNICOM <b>122.8 (CTAF)</b>

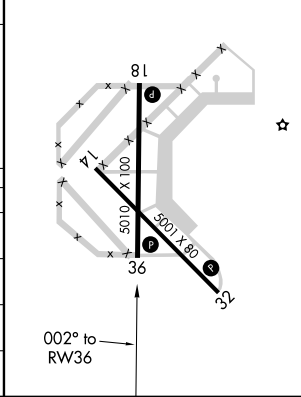


Procedure NA for arrival on ARG VORTAC airway radials 016 CW 149.



ELEV 295	TDZE 295
----------	----------

REIL Rwy 14, 18, 32, and 36  
MIRL Rwy 14-32 and 18-36



CATEGORY	A	B	C	D
LPV DA		495-1 200 (200-1)		NA
LNAV/VNAV DA		545-1 250 (300-1)		NA
LNAV MDA		640-1 345 (400-1)		NA
CIRCLING	720-1 425 (500-1)	800-1 505 (600-1)	800-1½ 505 (600-1½)	NA

NC-3, 13 JUN 2024 to 11 JUL 2024

NC-3, 13 JUN 2024 to 11 JUL 2024