

APP CRS <b>239°</b>	Rwy Idg TDZE Apt Elev	<b>N/A</b> <b>N/A</b> <b>692</b>
------------------------	-----------------------------	--

# RNAV (GPS)-A

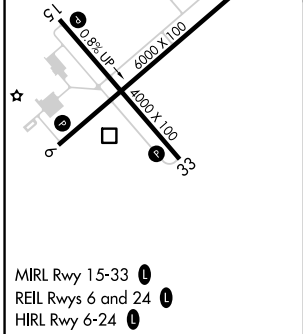
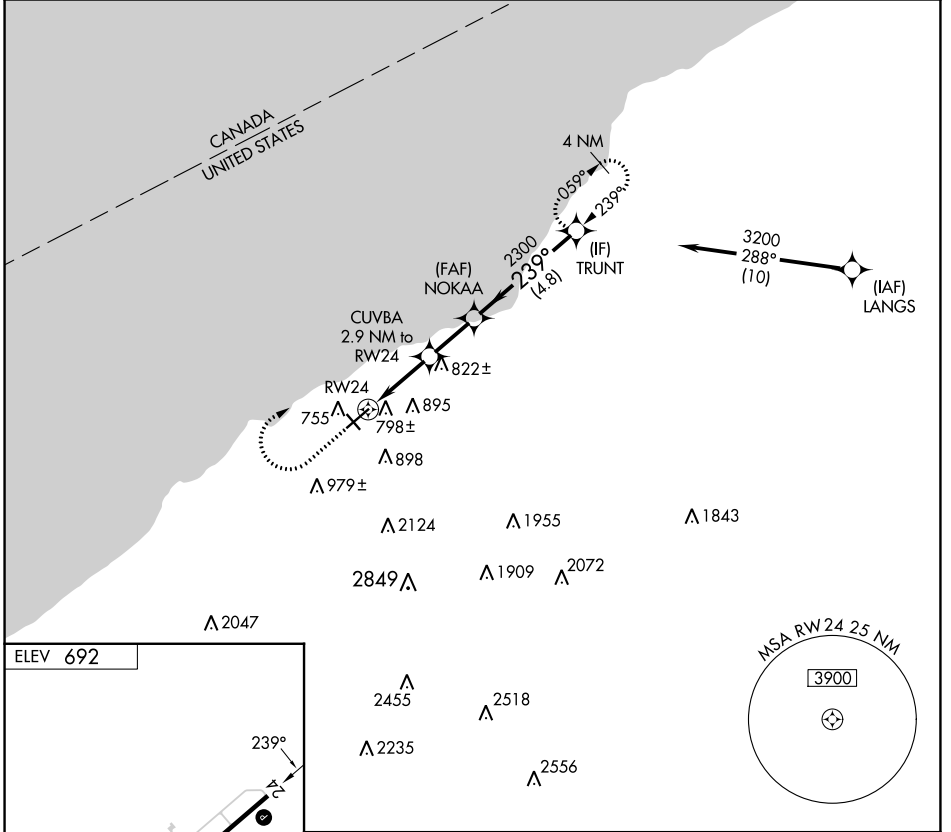
CHAUTAUGUA COUNTY/DUNKIRK (DKK)

RNP APCH - GPS.

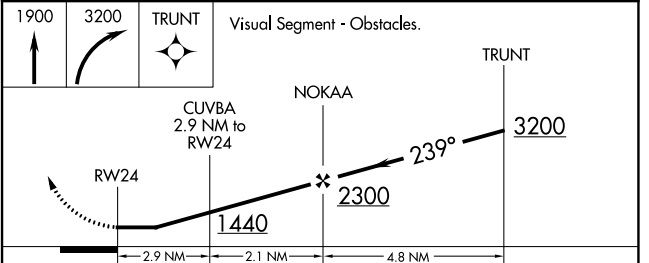
**⚠** Circling Cat D NA southeast of Rwy 6 and southwest of Rwy 33.  
**⚠** Circling Rwy 6, 24, 33 NA at night.  
**⚠** -22°C Rwy 6, 24, 33 helicopter visibility reduction below 1 SM NA.

MISSED APPROACH: Climb to 1900 then climbing right turn to 3200 direct TRUNT and hold.

ASOS <b>119.275</b>	BUFFALO APP CON <b>126.5 317.6</b>	UNICOM <b>123.075 (CTAF) 0</b>
------------------------	---------------------------------------	-----------------------------------



MIRL Rwy 15-33 **0**  
 REIL Rws 6 and 24 **0**  
 HIRL Rwy 6-24 **0**



CATEGORY	A	B	C	D
<b>C</b> CIRCLING	1200-1 508 (600-1)	1320-1 628 (700-1)	1640-2¾ 948 (1000-2¾)	2140-3 1448 (1500-3)

NE-2, 13 JUN 2024 to 11 JUL 2024

NE-2, 13 JUN 2024 to 11 JUL 2024