

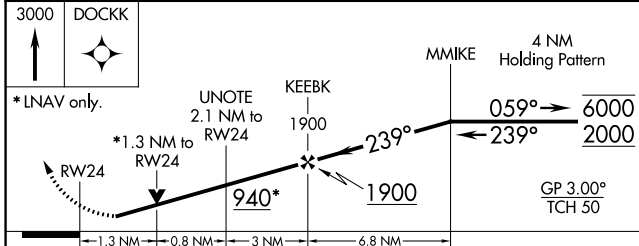
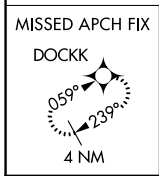
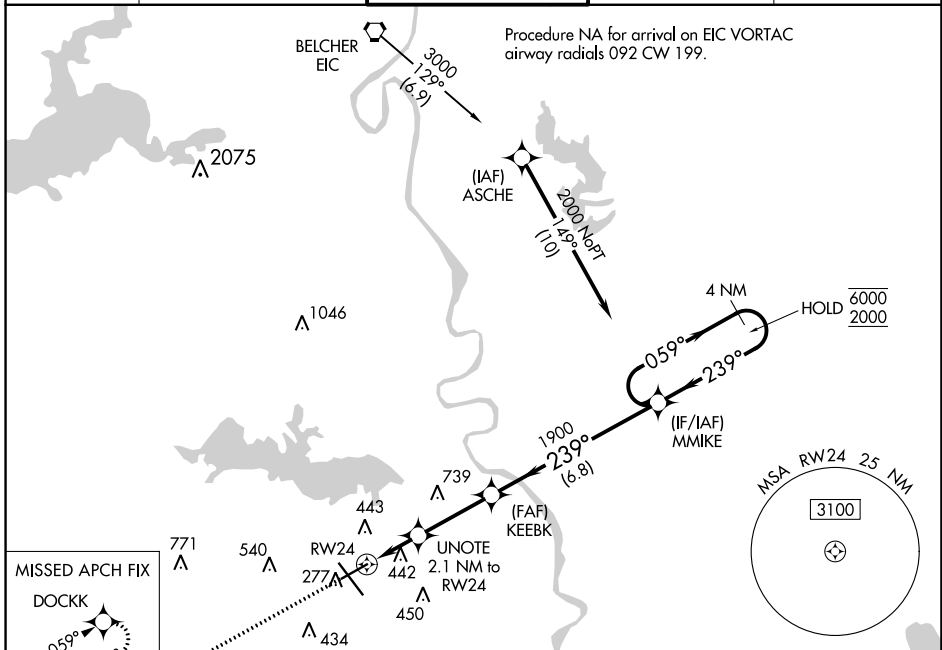
WAAS CH <b>97638</b> <b>W24A</b>	APP CRS <b>239°</b>	Rwy Idg TDZE <b>237</b> Apt Elev <b>258</b>	<b>7003</b>
--	------------------------	---	-------------

# RNAV (GPS) RWY 24

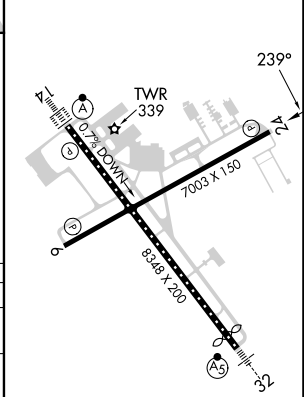
SHREVEPORT RGNL (SHV)

RNP APCH: ▼ Rwy 24 helicopter visibility reduction below 3/4 SM NA. For uncompensated Baro-VNAV systems, LNAV/VNAV NA below -6°C or above 54°C. ▲ ASR		MISSED APPROACH: Climb to 3000 direct DOCKK and hold, continue to climb-in-hold to 3000.	
---	--	--	--

ATIS <b>128.45</b>	SHREVEPORT APP CON <b>119.9 335.55</b>	SHREVEPORT TOWER <b>121.4 236.775</b>	GND CON <b>121.175 236.775</b>	CLNC DEL <b>124.65</b>
-----------------------	---	--	-----------------------------------	---------------------------



ELEV 258	<b>D</b> TDZE 237
----------	-------------------



CATEGORY	A	B	C	D
LPV DA		487-7/8	250 (300-7/8)	
LNAV/VNAV DA		749-1 3/4	512 (500-1 3/4)	
LNAV MDA	700-1	463 (500-1)	700-1 3/8	463 (500-1 3/8)
<b>C</b> CIRCLING	760-1	502 (600-1)	980-2 722 (800-2)	1100-2 3/4 842 (900-2 3/4)

REIL Rwy 6 and 24  
TDZ/CL Rwy 14  
HIRL Rwy 14-32  
MIRL Rwy 6-24

SC-4, 13 JUN 2024 to 11 JUL 2024

SC-4, 13 JUN 2024 to 11 JUL 2024