

LOC/DME I-CLM <b>108.9</b> Chan <b>26</b>	APP CRS <b>089°</b>	Rwy Idg <b>6347</b> TDZE <b>285</b> Apt Elev <b>291</b>
---	------------------------	---

# ILS or LOC RWY 9

WILLIAM R FAIRCHILD INTL (CLM)

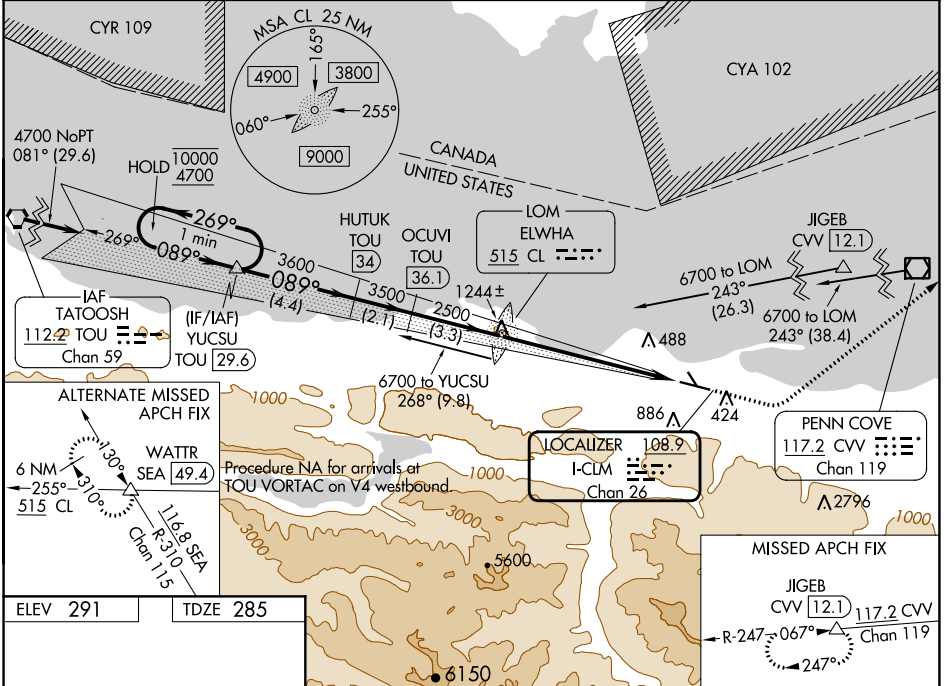
DME required. ADF required for LOC only.  
ADF required for procedure entry at JIGEB and CVV VOR/DME.

**NA** Circling NA south of Rwy 9-27. Circling Rwy 13, 31 NA at night.  
DME from TOU VORTAC. Simultaneous reception of I-CLM and TOU DME required. For inop ALS, increase S-LOC 9 Cat C/D visibility to 1½ SM.



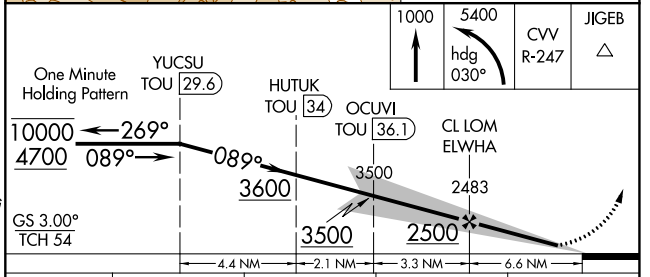
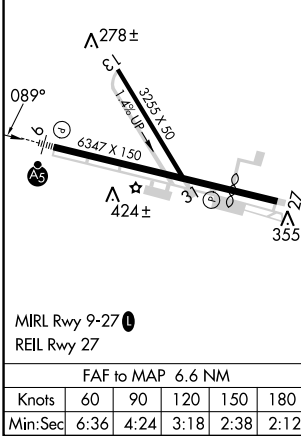
MISSED APPROACH: Climb to 1000 then climbing left turn to 5400 on heading 030° and on CVV VOR/DME R-247 to JIGEB/CVV 12.1 DME and hold, continue climb-in-hold to 5400.

ASOS <b>135.175</b>	WHIDBEY APP CON <b>118.2 285.65</b>	CLNC DEL <b>124.15</b>	UNICOM <b>122.975 (CTAF)</b>
------------------------	--	---------------------------	---------------------------------



NW-1, 13 JUN 2024 to 11 JUL 2024

NW-1, 13 JUN 2024 to 11 JUL 2024



CATEGORY	A	B	C	D
S-ILS 9	496-½ 211 (300-½)			
S-LOC 9	900-½	615 (700-½)	900-1¾	615 (700-1¾)
<b>C</b> CIRCLING	900-1	609 (700-1)	900-1¾	1000-2¼ 709 (800-2¼)