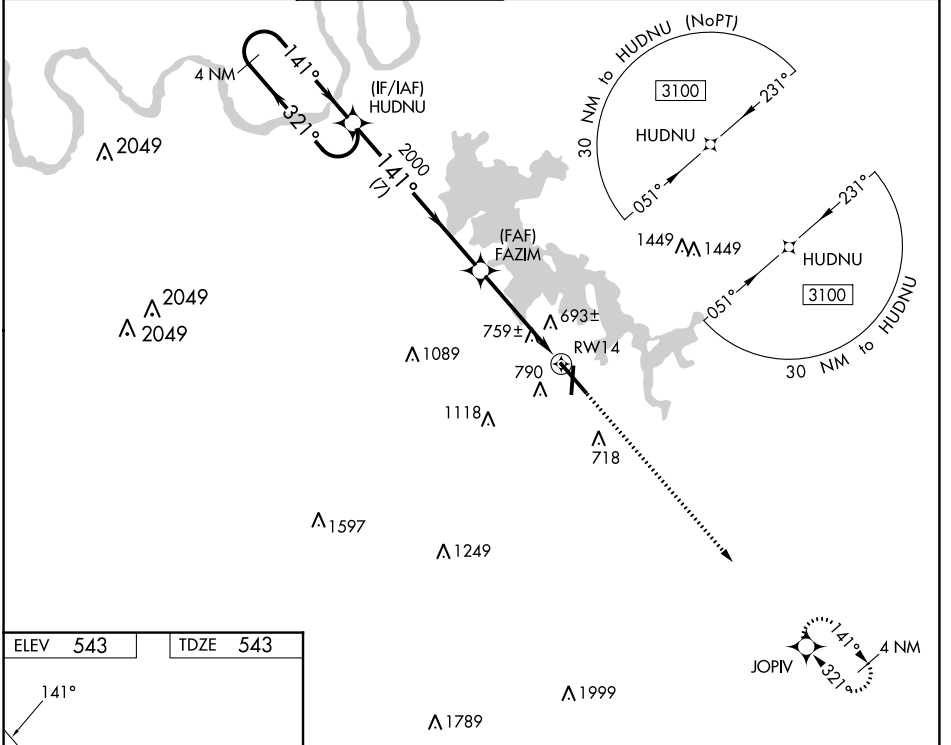


WAAS CH <b>49036</b> <b>W14A</b>	APP CRS <b>141°</b>	Rwy Idg TDZE <b>543</b> Apt Elev <b>543</b>	<b>8038</b>
--	------------------------	---	-------------

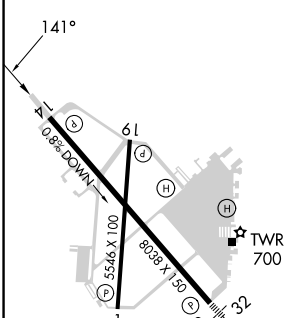
# RNAV (GPS) RWY 14

SMYRNA (MQY)

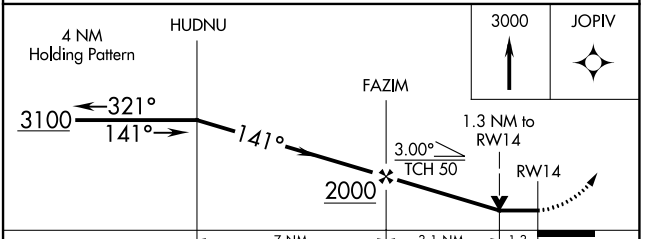
<p><b>⚠</b> DME/DME RNP-0.3 NA. When local altimeter setting not received, use Nashville Intl altimeter setting and increase all MDA 40 feet; increase LNAV Cat C and D visibility 1/8 mile, and increase Circling Cat C visibility 1/4 mile. VDP NA when using Nashville Intl altimeter setting. Helicopter visibility reduction below 3/4 SM NA.</p>				<p>MISSED APPROACH: Climb to 3000 direct JOPIV and hold.</p>			
AWOS-3PT <b>119.125</b>	NASHVILLE APP CON <b>118.4 360.7</b>	SMYRNA TOWER * <b>118.5 (CTAF) 0 233.1</b>	GND CON <b>121.4</b>	CLNC DEL <b>121.4</b>	CLNC DEL <b>121.7</b> (When twr closed)	UNICOM <b>122.95</b>	



ELEV <b>543</b>	TDZE <b>543</b>
-----------------	-----------------



- REIL Rwy 14 **0**
- HIRL Rwy 14-32 **0**
- MIRL Rwy 1-19 **0**
- REIL Rws 1, 19, and 32 **0**



	A	B	C	D
LP MDA	1020-1	477 (500-1)	1020-1 <sup>3</sup> / <sub>8</sub>	477 (500-1 <sup>3</sup> / <sub>8</sub> )
LNAV MDA	1040-1	497 (500-1)	1040-1 <sup>3</sup> / <sub>8</sub>	497 (500-1 <sup>3</sup> / <sub>8</sub> )
<b>C</b> CIRCLING	1100-1 557 (600-1)	1200-1 657 (700-1)	1260-2 717 (800-2)	1480-3 937 (1000-3)

SE-1, 13 JUN 2024 to 11 JUL 2024

SE-1, 13 JUN 2024 to 11 JUL 2024