

WAAS CH <b>42932</b> <b>W19A</b>	APP CRS <b>190°</b>	Rwy Idg <b>5546</b> TDZE <b>521</b> Apt Elev <b>543</b>
--	------------------------	---

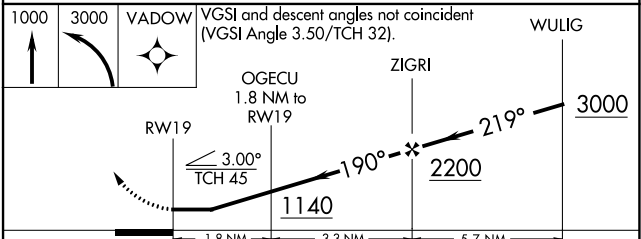
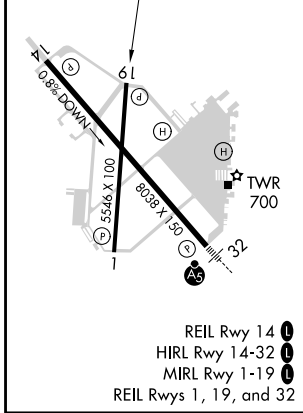
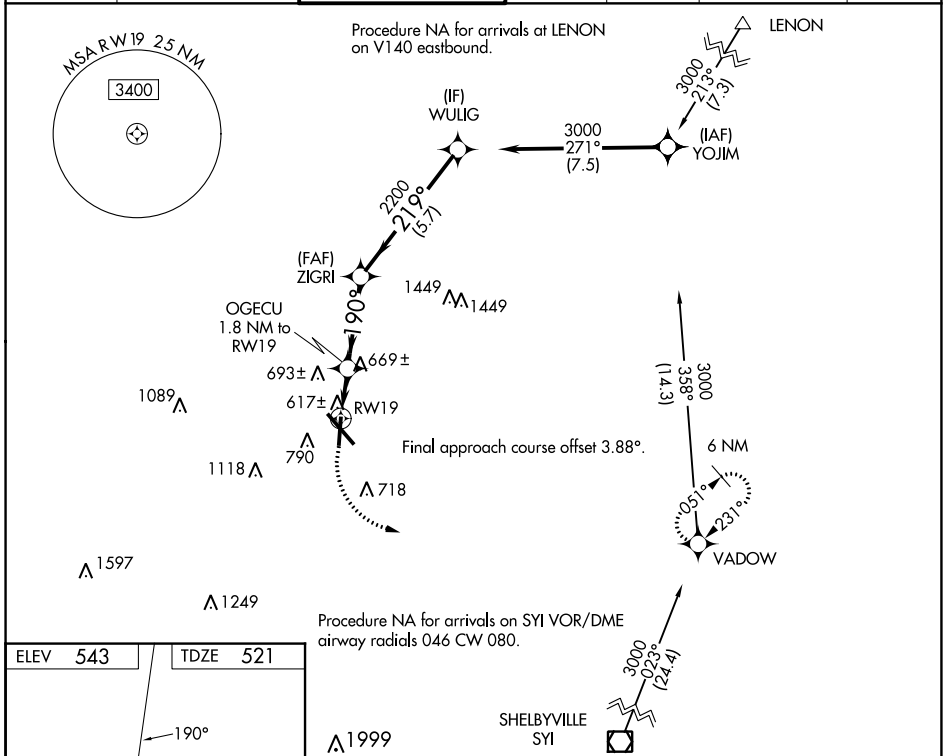
# RNAV (GPS) RWY 19

SMYRNA (MQY)

**⚠** DME/DME RNP-0.3 NA. Helicopter visibility reduction below 3/4 SM NA.  
 When local altimeter setting not received, use Nashville Intl altimeter setting and increase all MDA 40 feet and increase LP and LNAV Cat C/D visibility 1/8 mile.

MISSED APPROACH: Climb to 1000 then climbing left turn to 3000 direct VADOW and hold.

AWOS-3PT <b>119.125</b>	NASHVILLE APP CON <b>118.4 360.7</b>	SMYRNA TOWER ★ <b>118.5 (CTAF) 233.1</b>	GND CON <b>121.4</b>	CLNC DEL <b>121.4</b>	CLNC DEL <b>121.7</b> (When twr closed)	UNICOM <b>122.95</b>
----------------------------	---	---	-------------------------	--------------------------	---	-------------------------



1000	3000	VADOW	VGSIs and descent angles not coincident (VGSi Angle 3.50/TCH 32).		WULIG
RWY 19		OGECU 1.8 NM to RWY 19	ZIGRI	190°	3000
1140		3.00° TCH 45	2200	219°	3000
1.8 NM		3.3 NM	5.7 NM		
CATEGORY	A	B	C	D	
LP MDA	880-1 359 (400-1)				
LNAV MDA	920-1	399 (400-1)	920-1 1/8	399 (400-1 1/8)	
CIRCLING	1100-1 557 (600-1)	1200-1 657 (700-1)	1240-2 697 (700-2)	1480-3 937 (1000-3)	

# RNAV (GPS) RWY 19

SE-1, 13 JUN 2024 to 11 JUL 2024

SE-1, 13 JUN 2024 to 11 JUL 2024