

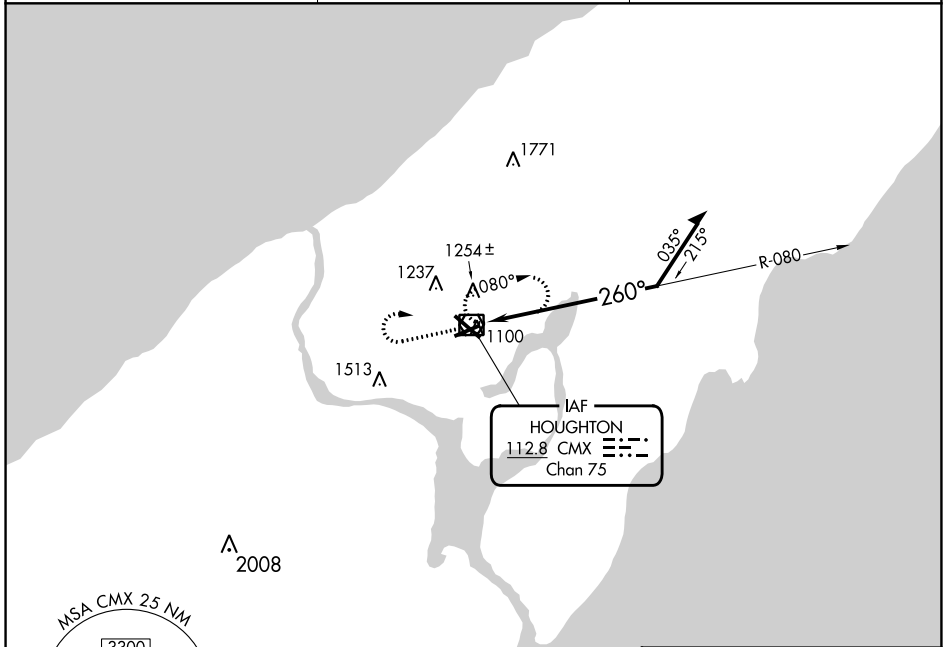
VOR/DME CMX	APP CRS	Rwy Idg	5201
112.8	260°	TDZE	1075
Chan 75		Apt Elev	1095

VOR RWY 25

HOUGHTON COUNTY MEML (CMX)

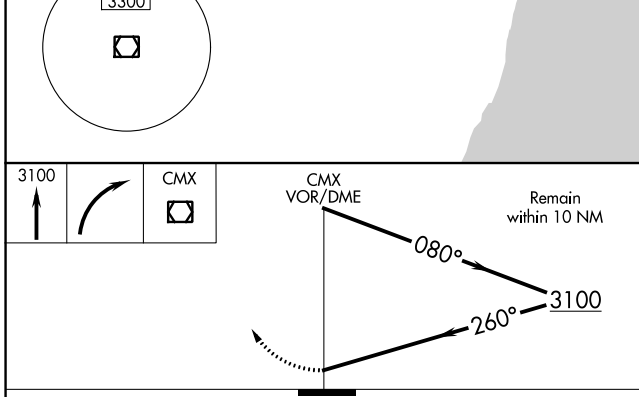
<p>Rwy 25 helicopter visibility reduction below 3/4 SM NA.</p>	<p>MISSED APPROACH: Climb to 3100 then right turn direct CMX VOR/DME and hold.</p>
--	--

ASOS 125.675	MINNEAPOLIS CENTER 133.55 379.1	UNICOM 122.7 (CTAF) 0
------------------------	---	---------------------------------

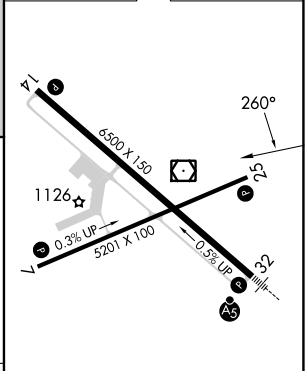


EC-1, 13 JUN 2024 to 11 JUL 2024

EC-1, 13 JUN 2024 to 11 JUL 2024



ELEV 1095	D	TDZE 1075
-----------	---	-----------



CATEGORY	A	B	C	D
S-25	1620-1	545 (600-1)	1620-1 3/8 545 (600-1 3/8)	1620 1 3/4 545 (600-1 3/4)
CIRCLING	1620-1 525 (600-1)	1660-1 565 (600-1)	1700-1 3/4 605 (700-1 3/4)	1820-2 1/4 725 (800-2 1/4)

MIRL Rwy 7-25

REIL Rwy 7, 14 and 25

HIRL Rwy 14-32