

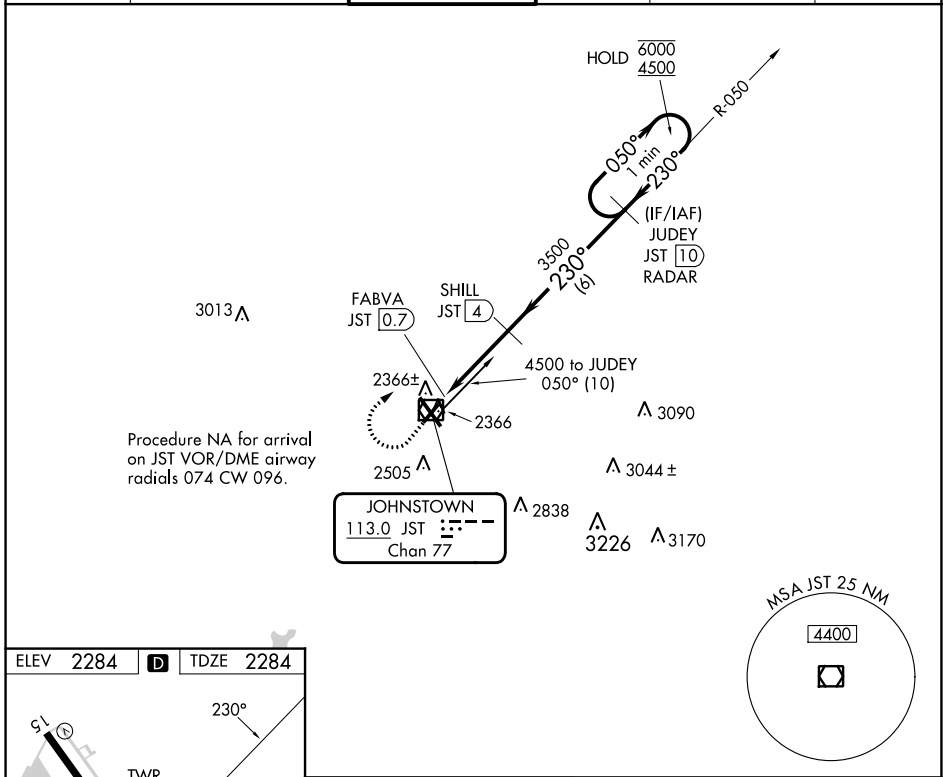
VOR/DME JST	APP CRS	Rwy Idg	4387
113.0	230°	TDZE	2284
Chan 77		Apt Elev	2284

VOR Z RWY 23

JOHN MURTHA JOHNSTOWN/CAMBRIA COUNTY (JST)

DME required.		MISSED APPROACH: Climb to 3000 then climbing right turn to 4500 on heading 075° and JST VOR/DME R-050 to JUDEY/JST 10 DME/RADAR and hold.	
<p>▼ Rwy 23 helicopter visibility reduction below 3/4 SM NA.</p>			

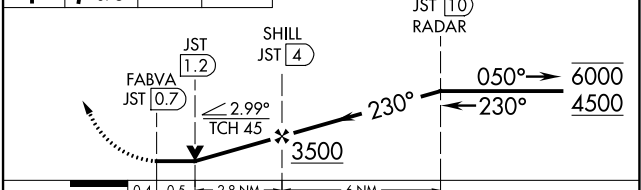
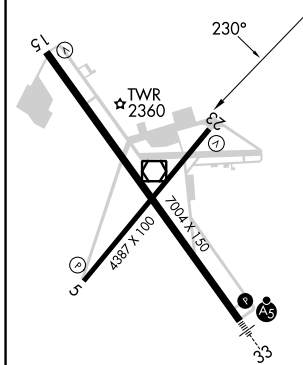
ATIS	JOHNSTOWN APP CON *	JOHNSTOWN TOWER *	GND CON	CLNC DEL	UNICOM
118.325	121.2 299.2	125.75 (CTAF) 0	121.6	126.85 235.775	122.95



NE-4, 13 JUN 2024 to 11 JUL 2024

NE-4, 13 JUN 2024 to 11 JUL 2024

ELEV	2284	D	TDZE	2284
------	------	---	------	------



CATEGORY	A	B	C	D
S-23	2620-1 336 (400-1)			
CIRCLING	2700-1 416 (500-1)	2880-1 596 (600-1)	2880-1½ 596 (600-1½)	3000-2¼ 716 (800-2¼)

REIL Rws 5 and 23
HIRL Rwy 15-33
MIRL Rwy 5-23

VOR Z RWY 23