

LOC/DME I-HOT <b>111.5</b> Chan <b>52</b>	APP CRS <b>053°</b>	Rwy Idg <b>6595</b> TDZE <b>516</b> Apt Elev <b>540</b>
---	------------------------	---

# ILS or LOC RWY 5

MEML FLD (HOT)

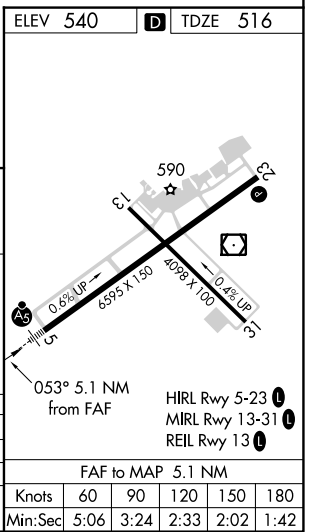
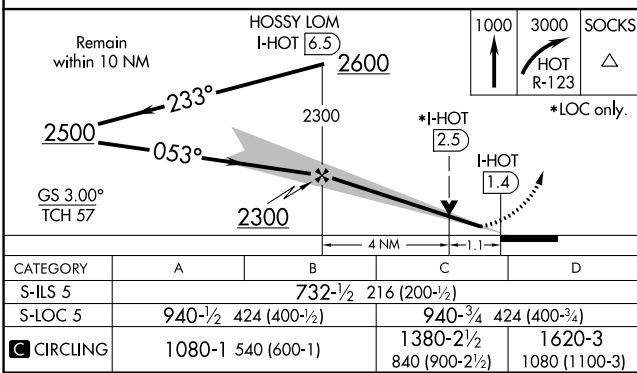
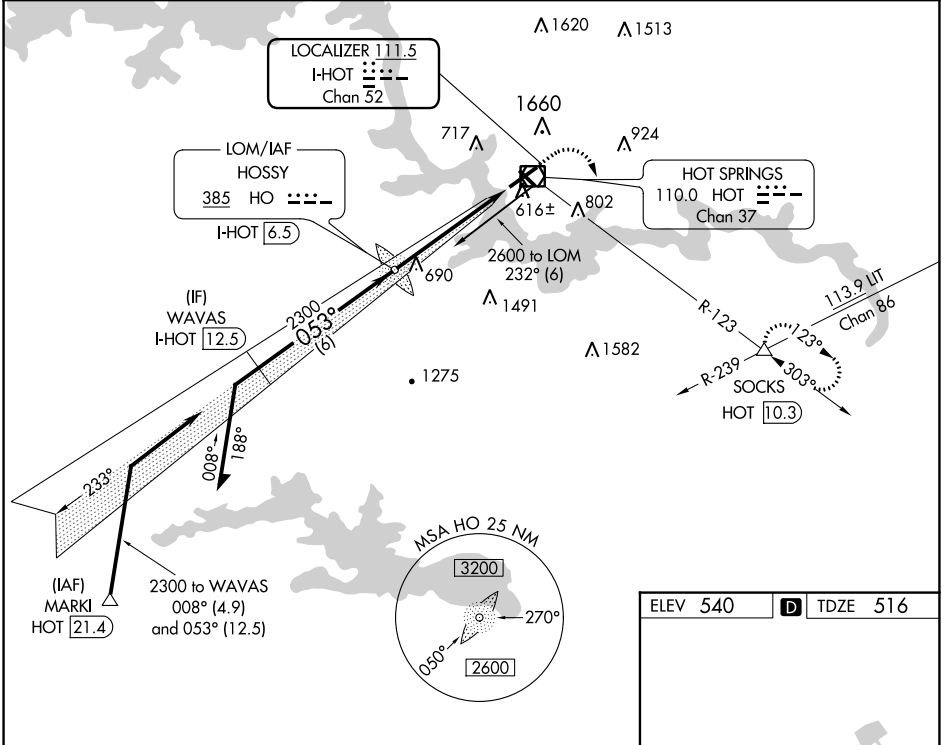
ADF or DME required.

**NA** Circling NA northwest of Rwy 5-23. Use I-HOT DME when on localizer course.

MALS R

MISSED APPROACH: Climb to 1000 then climbing right turn to 3000 on HOT VOR/DME R-123 to SOCKS INT/HOT 10.3 DME and hold.

ASOS <b>119.925</b>	MEMPHIS CENTER <b>128.475 377.15</b>	UNICOM <b>123.0 (CTAF)</b>
------------------------	---	-------------------------------



SC-1, 13 JUN 2024 to 11 JUL 2024

SC-1, 13 JUN 2024 to 11 JUL 2024