

WAAS CH <b>42836</b> <b>W31A</b>	APP CRS <b>309°</b>	Rwy Idg TDZE Apt Elev	<b>6005</b> <b>464</b> <b>474</b>
--	------------------------	-----------------------------	---

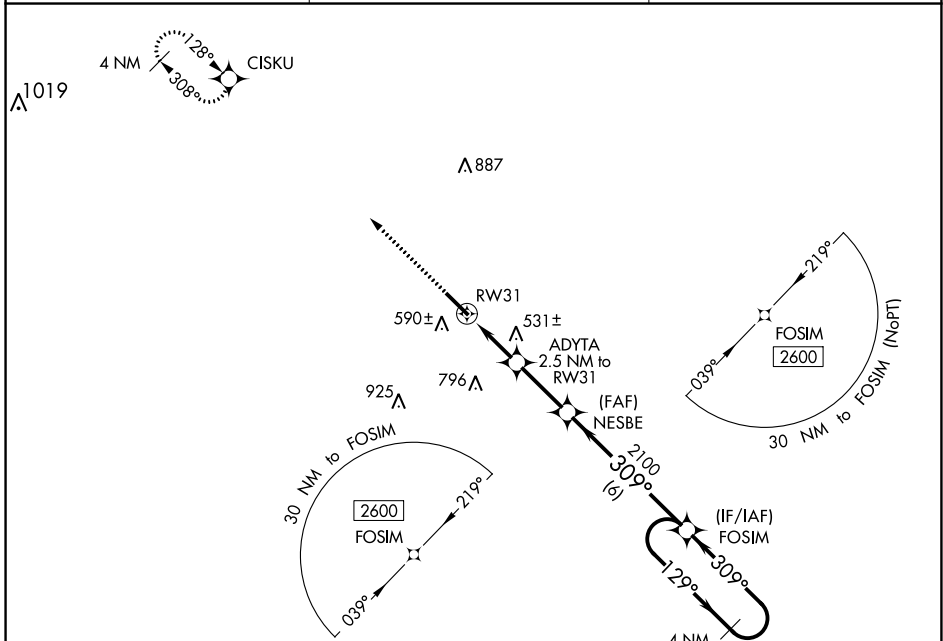
# RNAV (GPS) RWY 31

COTULLA-LA SALLE COUNTY (COT)

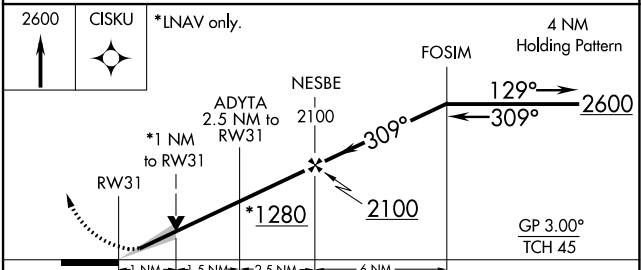
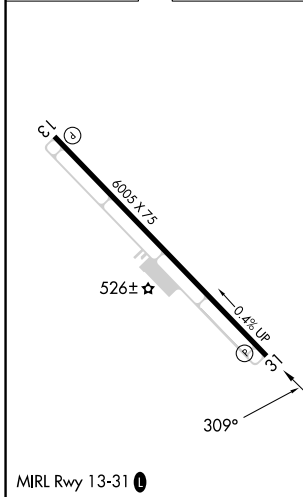
**▽** For uncompensated Baro-VNAV systems, LNAV/VNAV NA below -5°C (23°F) or above 54°C (130°F). DME/DME RNP-0.3 NA.

MISSED APPROACH: Climb to 2600 direct CISKU and hold.

ASOS <b>118.325</b>	HOUSTON CENTER <b>134.6 322.5</b>	UNICOM <b>122.7 (CTAF) 0</b>
------------------------	--------------------------------------	---------------------------------



ELEV <b>474</b>	TDZE <b>464</b>
-----------------	-----------------



CATEGORY	A	B	C	D
LPV DA		714-3/4	250 (300-3/4)	NA
LNAV/VNAV DA		714-3/4	250 (300-3/4)	NA
LNAV MDA		800-1	336 (400-1)	NA
<b>C</b> CIRCLING	920-1 446 (500-1)	940-1 466 (500-1)	1120-1 3/4 646 (700-1 3/4)	NA

SC-3, 13 JUN 2024 to 11 JUL 2024

SC-3, 13 JUN 2024 to 11 JUL 2024