

COTULLA, TEXAS

AL-907 (FAA)

23166

VORTAC COT <b>115.8</b> Chan <b>105</b>	APP CRS <b>259°</b>	Rwy Idg TDZE Apt Elev	<b>N/A</b> <b>N/A</b> <b>474</b>
---	------------------------	-----------------------------	--

**VOR-A**

COTULLA-LA SALLE COUNTY (COT)

**▼** When local altimeter setting not received, use Pleasanton Muni altimeter setting; increase all MDA 120 feet, Circling Cat C visibility ½ SM.

**MISSED APPROACH:** Climbing right turn to 2100 direct COT VORTAC and hold.

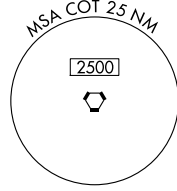
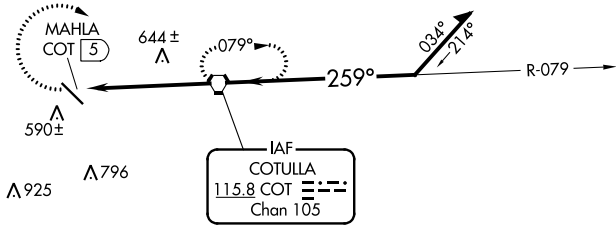
ASOS  
**118.325**

HOUSTON CENTER  
**134.6 322.5**

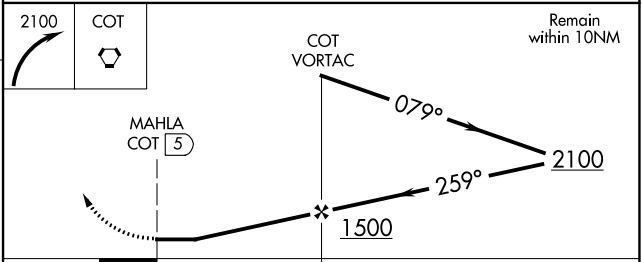
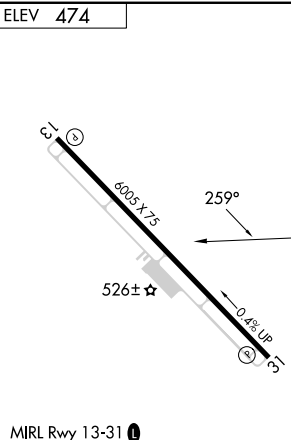
UNICOM  
**122.7 (CTAF) 0**

△1038

△887



ELEV **474**



Remain within 10NM

FAF to MAP 5 NM						CATEGORY	A	B	C	D
Knots	60	90	120	150	180	<b>☑</b> CIRCLING	920-1 446 (500-1)	940-1 466 (500-1)	1120-1¾ 646 (700-1¾)	NA
Min:Sec	5:00	3:20	2:30	2:00	1:40					

COTULLA, TEXAS  
Amdt 13A 08OCT20

28°27'N-99°13'W

COTULLA-LA SALLE COUNTY (COT)  
**VOR-A**

SC-3, 13 JUN 2024 to 11 JUL 2024

SC-3, 13 JUN 2024 to 11 JUL 2024