

LOC I-SFM 111.5	APP CRS 075°	Rwy Idg 6389 TDZE 241 Apt Elev 244
---------------------------	------------------------	--

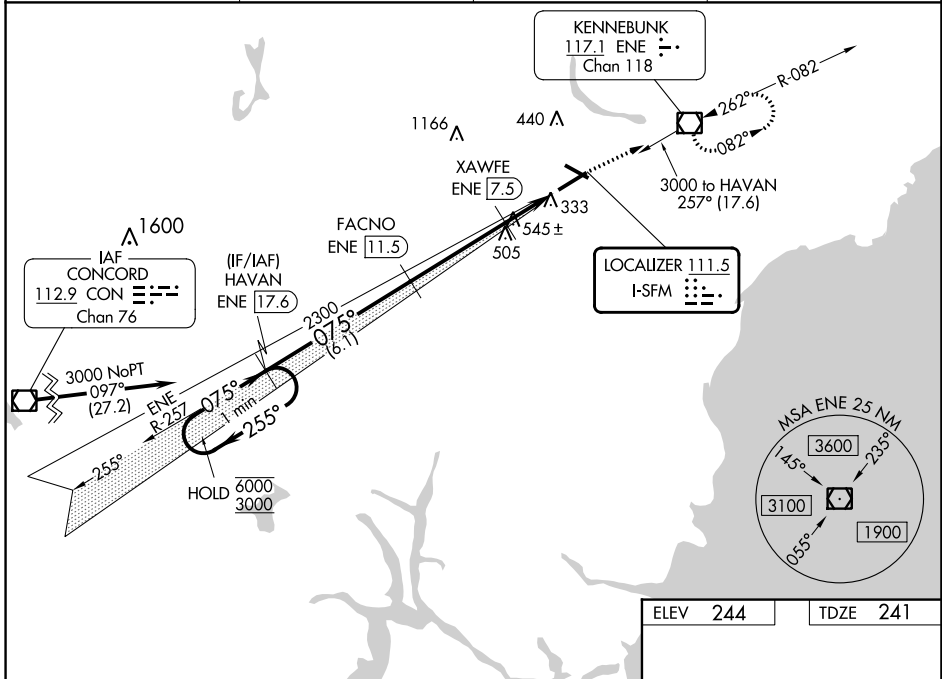
ILS or LOC RWY 7
SANFORD SEACOAST RGNL (SFM)

DME required.

⚠ Rwy 7 helicopter visibility reduction below $\frac{3}{4}$ SM NA. VDP NA when using Rochester altimeter setting. DME from ENE VOR/DME. Simultaneous reception of I-SFM and ENE DME required. When local altimeter setting not received, use Rochester altimeter setting: increase S-ILS 7 DA to 479 feet; increase all MDAs 40 feet and S-LOC 7 Cats C/D visibility $\frac{1}{8}$ SM and Circling Cat C visibility $\frac{1}{4}$ SM.

MISSED APPROACH: Climb to 2500 direct ENE VOR/DME and hold, continue climb-in-hold to 2500.

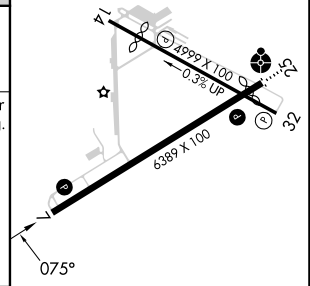
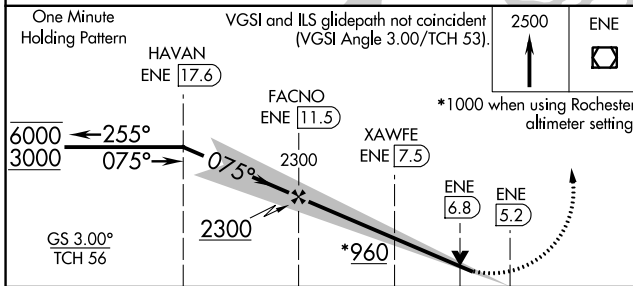
AWOS-3PT 120.025	PORTLAND APP CON * 119.75 269.35	CLNC DEL 121.725	UNICOM 123.075 (CTAF) 0
----------------------------	--	----------------------------	-----------------------------------



NE-1, 13 JUN 2024 to 11 JUL 2024

NE-1, 13 JUN 2024 to 11 JUL 2024

ELEV 244	TDZE 241
-----------------	-----------------



CATEGORY	A	B	C	D
S-ILS 7		441- $\frac{3}{4}$	200 (200- $\frac{3}{4}$)	
S-LOC 7	800-1 559 (600-1)		800-1 $\frac{5}{8}$ 559 (600-1 $\frac{5}{8}$)	
C CIRCLING	800-1 556 (600-1)		1180-2 $\frac{3}{4}$ 936 (1000-2 $\frac{3}{4}$)	1240-3 996 (1000-3)

REIL Rwy 7 **0**
HIRL Rwy 7-25 **0**
MIRL Rwy 14-32 **0**