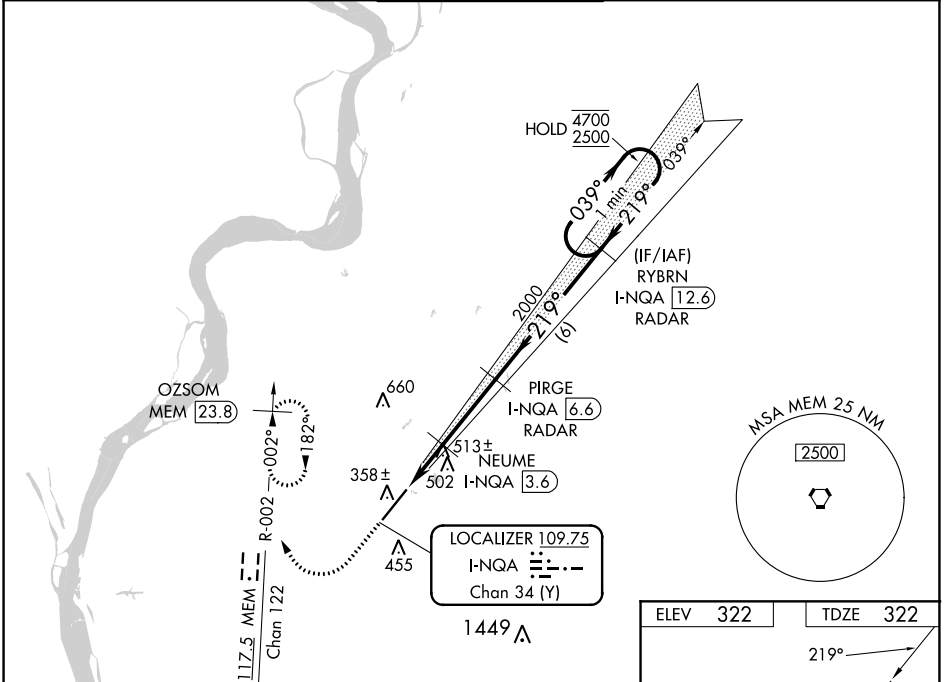


LOC/DME I-NQA <b>109.75</b> Chan <b>34</b> (Y)	APP CRS <b>219°</b>	Rwy Idg TDZE <b>322</b> Apt Elev <b>322</b>	<b>8001</b>
--	------------------------	---	-------------

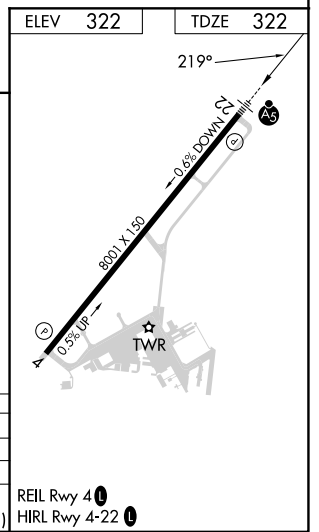
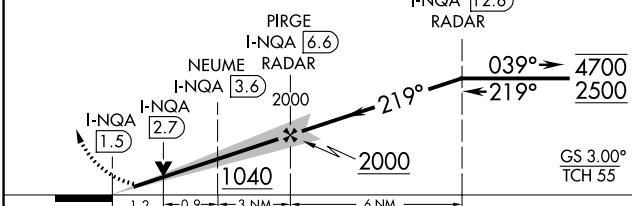
# ILS or LOC RWY 22

MILLINGTON/MEMPHIS (NQA)

DME required. RADAR required for procedure entry.		MALSR 	MISSED APPROACH: Climb to 1000 then climbing right turn to 3000 on MEM VORTAC R-002 to OZSOM/MEM 23.8 DME and hold, continue climb-in-hold to 3000.	
	S-ILS 22 procedure NA when control tower closed if ceiling/visibility lower than 800/2. For inop ALS, increase S-ILS 22 Cat E visibility to 3/4 SM and S-LOC 22 Cat E visibility to 1 3/8 SM.		AWOS-3 <b>118.925</b>	MEMPHIS APP CON <b>119.1 291.6</b> (176°-355°) <b>125.8 338.3</b> (356°-175°)
MILLINGTON TOWER ★ <b>120.25</b> (CTAF) <b>340.2</b>		GND CON <b>121.375</b>	UNICOM <b>122.95</b>	



1000	3000	OZSOM MEM (23.8)	VGSI and ILS glidepath not coincident (VGSI Angle 3.00/TCH 67). One Minute Holding Pattern
		MEM R-002	



CATEGORY	A	B	C	D	E
S-ILS 22	522-1/2 200 (200-1/2)				
S-LOC 22	780-1/2	458 (500-1/2)	780-7/8 458 (500-7/8)		
CIRCLING	800-1 478 (500-1)	820-1 498 (500-1)	920-1 1/2 598 (600-1 1/2)	960-2 638 (700-2)	960-2 1/4 638 (700-2 1/4)

REIL Rwy 4

HIRL Rwy 4-22

SE-1, 13 JUN 2024 to 11 JUL 2024

SE-1, 13 JUN 2024 to 11 JUL 2024