

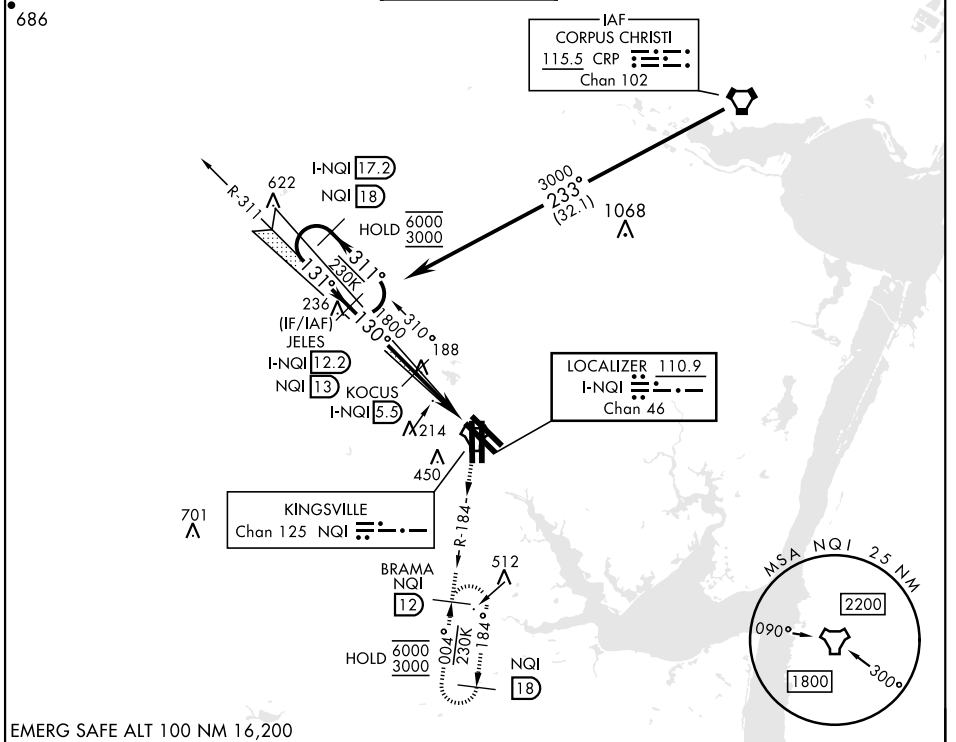
ILS Z or LOC/DME Z RWY 13R

LOC/DME I-NQI 110.9 Chan 46	APCH CRS 130°	Rwy Idg TDZE Arprt Elev 8000 50 50	AL-918 [USN]	KINGSVILLE NAS (KNQI)
---	-------------------------	--	--------------	-----------------------

TACAN required.

MISSED APPROACH: Climbing right turn to 3000 and intercept NQI TACAN R-184 to BRAMA and hold.

ATIS ★ 282.25	APP CON 119.9 290.45	TOWER ★ 124.1 377.05	GND CON 239.05	CLNC DEL 328.4	ASR/PAR
-------------------------	--------------------------------	--------------------------------	--------------------------	--------------------------	---------



EMERG SAFE ALT 100 NM 16,200

I-NQI 17.2 NQI 18 JELES I-NQI 12.2 NQI 13 KOCUS I-NQI 5.3 PEXIE I-NQI 0.7 LOC DME BRAMA NQI 12 R-184 ELEV 50 TDZE 50 3000 NQI R-184 130° 5.3 NM from FAF 171 17R 131 13R 198 TW R 8000 x 128 8000 x 128 8000 x 128 8000 x 128 35L 35R A1	VGSI and ILS glidepath not coincident (VGSI TCH 34).			
	6000	3000	311°	131°
3000	130°	1800	4.8 NM	0.5
GS 3.00°	TCH 50			
CATEGORY	A	B	C	D
S-ILS 13R		250-¾	200	(200-¾)
S-LOC 13R	460-1	410 (500-1)	460-1½	410 (500-1½)
CIRCLING	540-1	490 (500-1)	710 (800-2)	710 (800-2½)
			760-2	760-2¼
HIRL all rwys REIL all rwys TDZL/CL Rwy 17L				

ILS Z or LOC/DME Z RWY 13R

SC-3, 13 JUN 2024 to 11 JUL 2024

SC-3, 13 JUN 2024 to 11 JUL 2024