

# TACAN RWY 17L

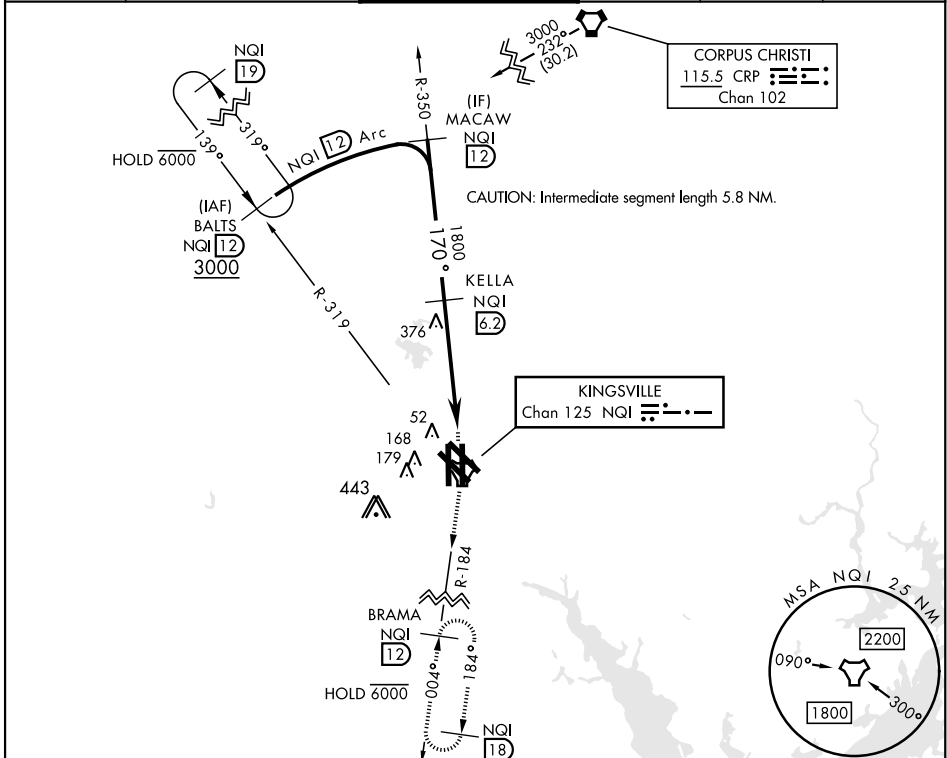
TACAN NQI Chan <b>125</b>	APCH CRS <b>170°</b>	Rwy Idg TDZE Arprt Elev	<b>8001</b> <b>49</b> <b>50</b>
------------------------------	-------------------------	----------------------------	---------------------------------------

AL-918 [USN]

KINGSVILLE NAS (KNQI)

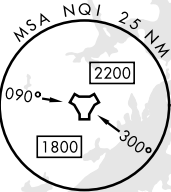
**MISSED APPROACH:** Climb to 3000 direct NQI TACAN and climbing right turn to intercept NQI R-184 to BRAMA and hold.

ATIS ★ <b>282.25</b>	APP CON <b>119.9 290.45</b>	TOWER ★ <b>124.1 377.05</b>	GND CON <b>239.05</b>	CLNC DEL <b>328.4</b>	ASR/PAR
-------------------------	--------------------------------	--------------------------------	--------------------------	--------------------------	---------

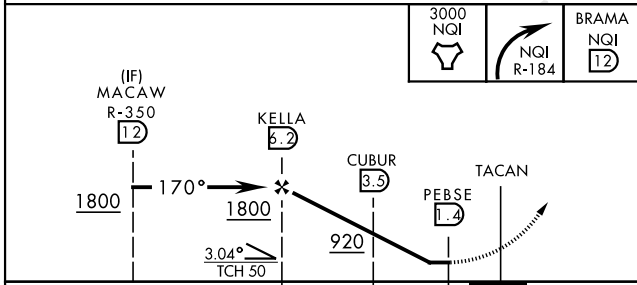


**CORPUS CHRISTI**  
115.5 CRP  
Chan 102

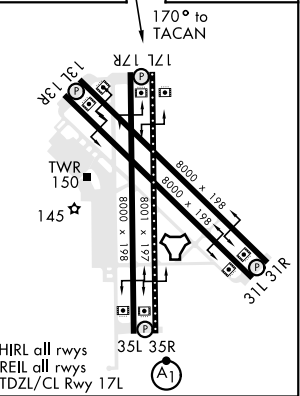
**KINGSVILLE**  
Chan 125 NQI



EMERG SAFE ALT 100 NM 16,200



ELEV 50 TDZE 49



CATEGORY	A	B	C	D
S-17L		360-1	311 (400-1)	
CIRCLING	540-1	490 (500-1)	760-2 710 (800-2)	760-2 1/4 710 (800-2 1/4)

HIRL all rwys  
REIL all rwys  
TDZL/CL Rwy 17L

# TACAN RWY 17L

SC-3, 13 JUN 2024 to 11 JUL 2024

SC-3, 13 JUN 2024 to 11 JUL 2024