

22139

SAN MARCUS ONE DEPARTURE (RZS 1 • RZS)

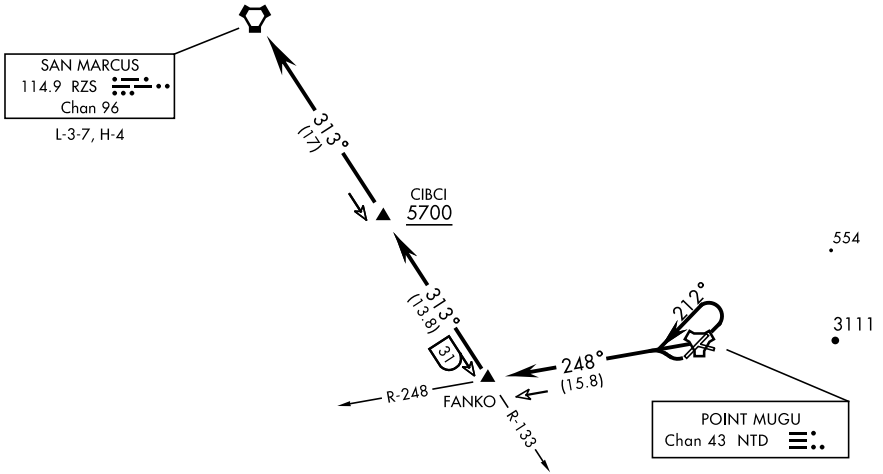
POINT MUGU NAS (NAVAL BASE VENTURA CO) (KNTD)
OXNARD, CALIFORNIA

ATIS ★ 125.55 363.05
CLNC DEL
120.75 279.55
GND CON
121.6 360.2
TOWER ★
124.85 290.375
DEP CON
128.65 307.275

AL-925 [USN]

Rwy	Knots	60	120	180	240	300	360
* 03 (C)	V/V(fpm)	205	410	615	820	1025	1230
† 21 (B)	V/V(fpm)	216	432	648	864	1080	1296
† 27 (B)	V/V(fpm)	214	428	642	856	1070	1284

* Minimum † ATC Climb Rate
(C) to 700
(B) to 8900



SW-3, 13 JUN 2024 to 11 JUL 2024

SW-3, 13 JUN 2024 to 11 JUL 2024

TACAN REQUIRED



DEPARTURE ROUTE DESCRIPTION

TAKEOFF RWY 3: Climbing left turn to 212° within 3 DME of NTD TACAN, thence...

TAKEOFF RWY 21: Turn right, thence...

TAKEOFF RWY 27: Turn left, thence...

...intercept NTD R-248 and via NTD R-248 to FANKO (NTD R-248/16 DME), then via RZS VORTAC R-133 to RZS VORTAC, then via assigned routing.
Cross CIBCI (RZS R-133/17 DME) at or above 5700.

SAN MARCUS ONE DEPARTURE (RZS 1 • RZS)

Amdt 1 19MAY22

POINT MUGU NAS (NAVAL BASE VENTURA CO) (KNTD)
OXNARD, CALIFORNIA