

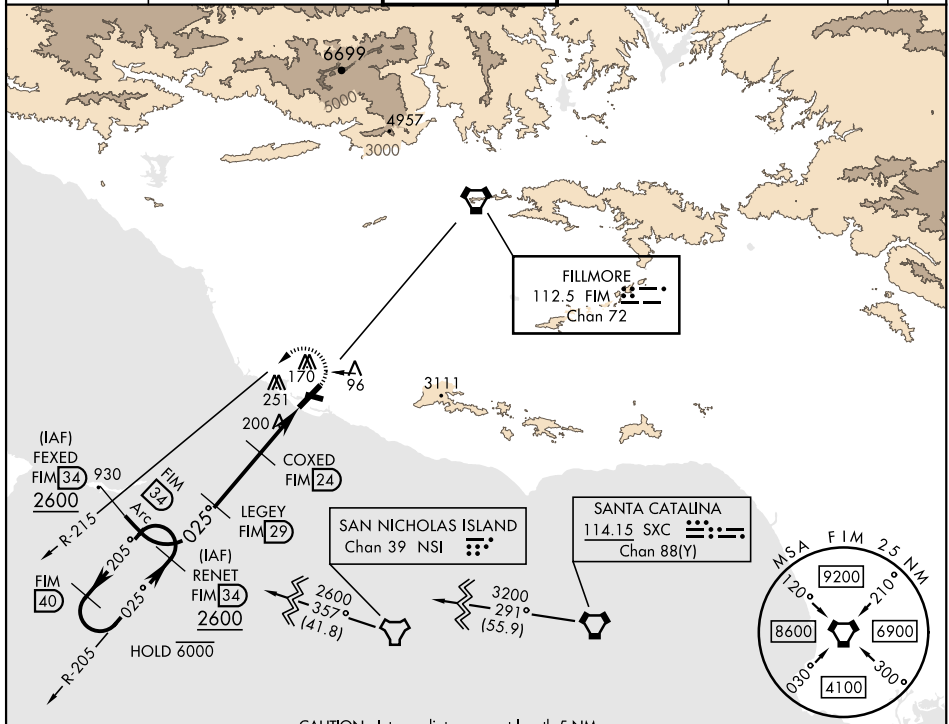
OXNARD, CALIFORNIA

TACAN Y or VOR/DME RWY 3

VORTAC FIM 112.5 Chan 72	APCH CRS 025°	Rwy Idg 11,102 TDZE 10 Arprt Elev 13
--------------------------------	------------------	--

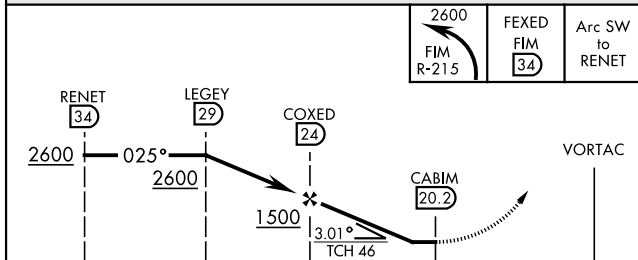
[USN] POINT MUGU NAS (NAVAL BASE VENTURA CO) (KN2D)

▼ * When ALS inop, increase CAT AB vis to 1 mile, CAT CDE to 1½ miles. ** Circling not authorized E of Rwy 3-21.	SALSF 	MISSED APPROACH: Climbing left turn to 2600. Intercept the FIM VORTAC R-215, then via FIM R-215 to FEXED, Arc SW of FIM via the 34 DME arc to RENET and hold.			
			ATIS ★ 125.55 363.05	POINT MUGU APP CON 128.65 307.275	POINT MUGU TOWER ★ 124.85 290.375



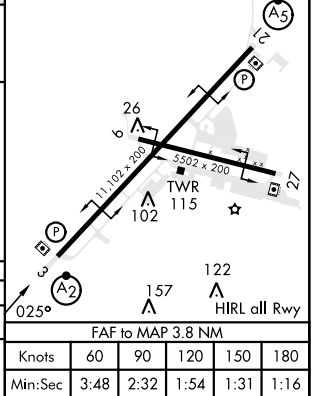
CAUTION: Intermediate segment length 5 NM.

EMERG SAFE ALT 100 NM 12,100



ELEV	13
TDZE	10

CATEGORY	A	B	C	D	E
S-3*	460-¾	450 (500-¾)	460-1	450 (500-1)	
CIRCLING**	460-1 447 (500-1)	480-1 467 (500-1)	480-1½ 467 (500-1½)	580-2 567 (600-2)	NA



OXNARD, CALIFORNIA

34°07'N-119°07'W

POINT MUGU NAS (NAVAL BASE VENTURA CO) (KN2D)

Amdt 5 31DEC20

TACAN Y or VOR/DME RWY 3

SW-3, 13 JUN 2024 to 11 JUL 2024

SW-3, 13 JUN 2024 to 11 JUL 2024