


VOR/DME LRP 117.3 Chan 120	APP CRS 090°	Rwy Idg 6118 TDZE 399 Apt Elev 403
--	------------------------	---

VOR RWY 8

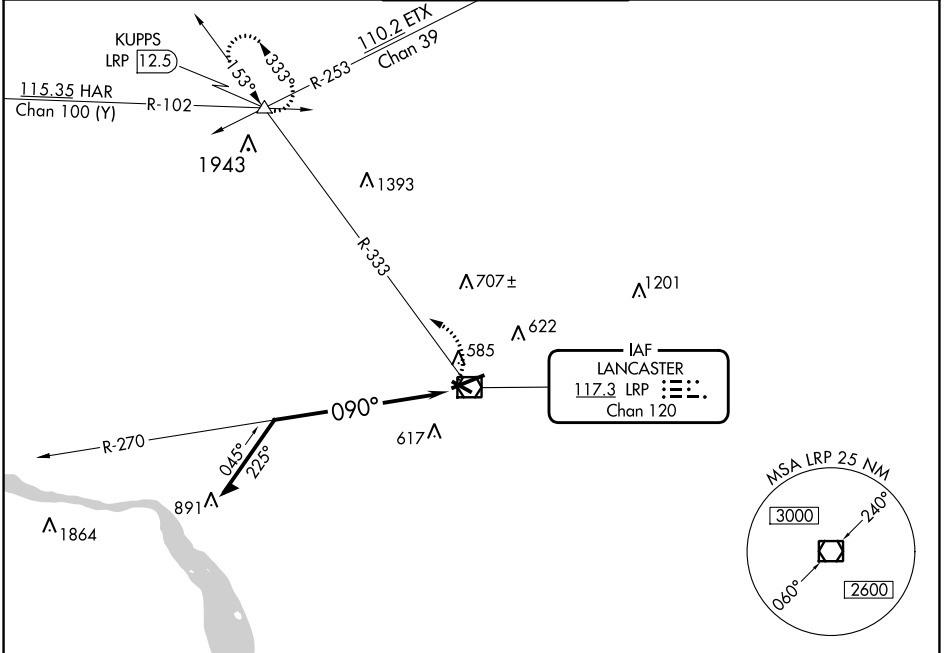
LANCASTER (LNS)

⚠ Night landing: Rwy 13, 31 NA. Inop table does not apply.
⚠ When local altimeter setting not received, use Harrisburg
 Init altimeter setting and increase all MDA 80 feet.

MALS R


MISSED APPROACH: Climbing left turn to 3000 via LRP VOR/DME R-333 to KUPPS INT/LRP 12.5 DME and hold.

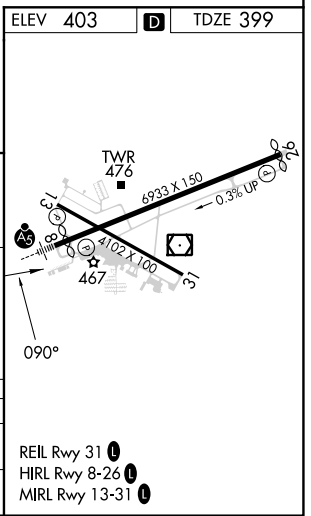
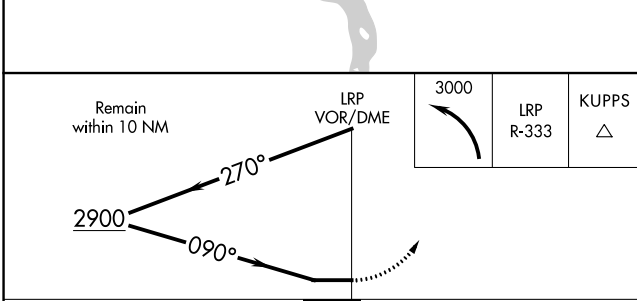
ATIS 125.675	HARRISBURG APP CON 126.45 281.525	LANCASTER TOWER ★ 120.9 (CTAF) 251.1	GND CON 121.8	UNICOM 122.95
------------------------	---	---	-------------------------	-------------------------



NE-4, 13 JUN 2024 to 11 JUL 2024

NE-4, 13 JUN 2024 to 11 JUL 2024

ELEV 403	D	TDZE 399
----------	----------	----------



CATEGORY	A	B	C	D
S-8	1400-1¼ 1001 (1000-1¼)	1400-1½ 1001 (1000-1½)	1400-3	1001 (1000-3)
CIRCLING	1400-1¼ 997 (1000-1¼)	1400-1½ 997 (1000-1½)	1400-3	997 (1000-3)