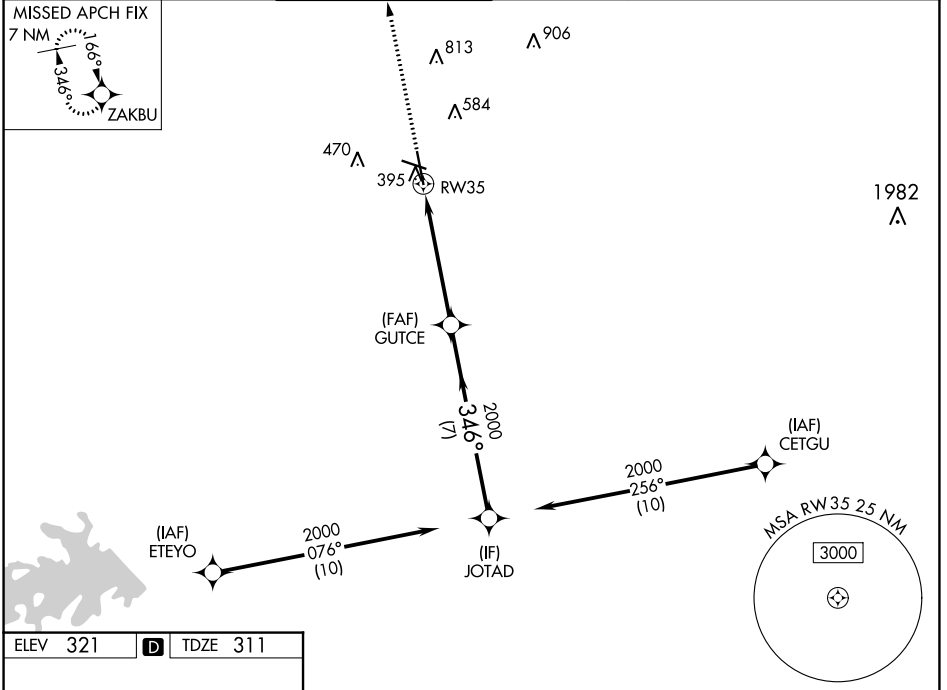


WAAS CH <b>63122</b> <b>W35A</b>	APP CRS <b>346°</b>	Rwy Idg <b>6932</b> TDZE <b>311</b> Apt Elev <b>321</b>
--	------------------------	---

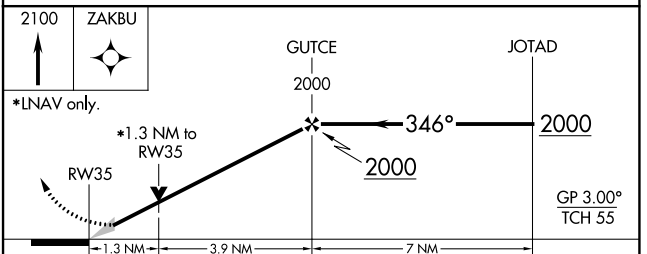
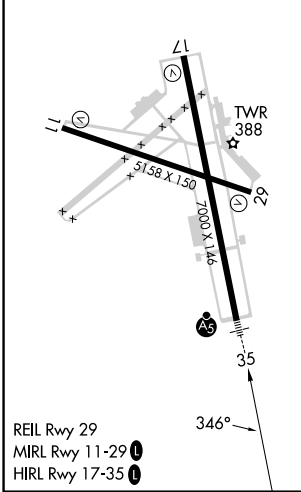
# RNAV (GPS) RWY 35

EASTERWOOD FLD (CLL)

RNP APCH.		EASTERWOOD TOWER ★		GND CON	CLNC DEL	CLNC DEL	UNICOM
<p>▼ For uncompensated Baro-VNAV systems, LNAV/VNAV NA below -3°C or above 54°C. For inop ALS, increase LPV Cat E and LNAV/VNAV all Cats visibility to ¾ SM, increase LNAV Cat E visibility to 1¾ SM.</p>		<p><b>118.5 (CTAF) 0 284.7</b></p>		<p><b>128.7 284.7</b></p>	<p><b>128.7</b></p>	<p><b>120.4</b> (when twr closed)</p>	<p><b>122.95</b></p>



ELEV 321	<b>D</b>	TDZE 311
----------	----------	----------



CATEGORY	A	B	C	D	E
LPV DA		511-½	200 (200-½)		
LNAV/VNAV DA		563-½	252 (300-½)		
LNAV MDA	760-½	449 (500-½)	760-⅞	449 (500-⅞)	
<b>C</b> CIRCLING	860-1 539 (600-1)	880-1 559 (600-1)	1000-2 679 (700-2)	1180-2¾ 859 (900-2¾)	1180-3 859 (900-3)

SC-5, 13 JUN 2024 to 11 JUL 2024

SC-5, 13 JUN 2024 to 11 JUL 2024