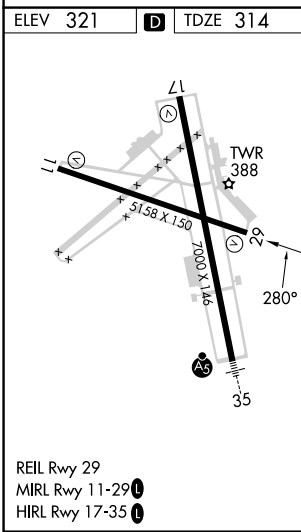
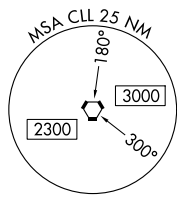
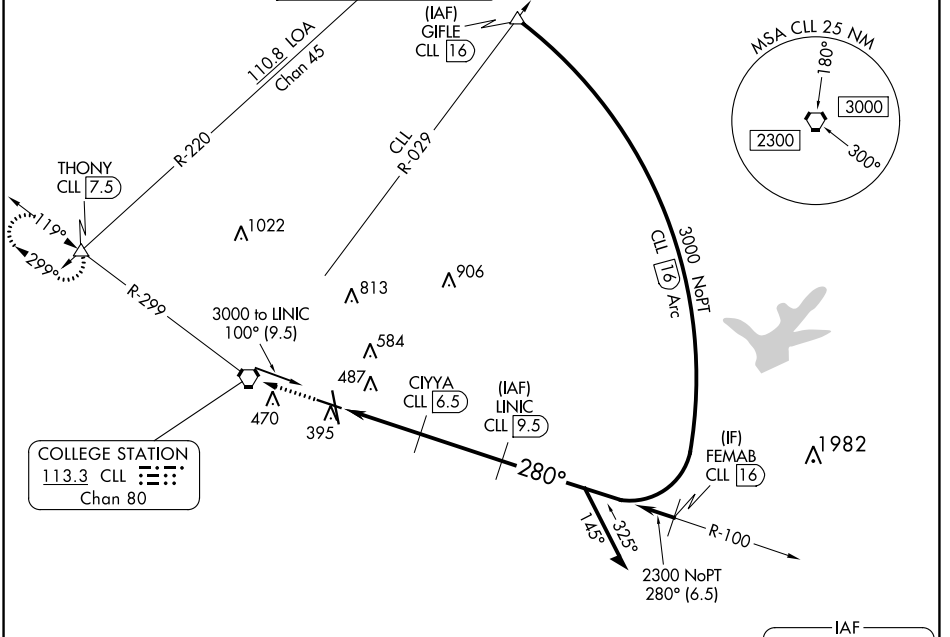


VORTAC CLL <b>113.3</b> Chan <b>80</b>	APP CRS <b>280°</b>	Rwy Idg <b>5158</b> TDZE <b>314</b> Apt Elev <b>321</b>
--	------------------------	---

# VOR RWY 29

EASTERWOOD FLD (CLL)

DME required for procedure entry. DME required.		MISSED APPROACH: Climb to 2500 direct CLL VORTAC then on CLL VORTAC R-299 to THONY INT/CLL 7.5 DME and hold.						
▼ ▲ Rwy 29 helicopter visibility reduction below 3/4 SM NA.		ATIS <b>126.85</b>	HOUSTON APP CON <b>134.3 360.85</b>	EASTERWOOD TOWER ★ <b>118.5 (CTAF) 284.7</b>	GND CON <b>128.7 284.7</b>	CLNC DEL <b>128.7</b>	CLNC DEL <b>120.4</b> (when twr closed)	UNICOM <b>122.95</b>



ELEV 321	D	TDZE 314		
2500	CLL	THONY	LINIC	Remain within 10 NM
↑	CLL R-299	△	CLL 9.5	
	CLL 3.5	CIYYA CLL 6.5	3.00° TCH 54	
	1.4 NM	1.7 NM	3 NM	
CATEGORY	A	B	C	D
S-29	800-1	486 (500-1)	800-1 3/8	486 (500-1 3/8)
CIRCLING	860-1 539 (600-1)	880-1 559 (600-1)	1000-2 679 (700-2)	1180-2 3/4 859 (900-2 3/4)

SC-5, 13 JUN 2024 to 11 JUL 2024

SC-5, 13 JUN 2024 to 11 JUL 2024