

LOC/DME I-OTH 108.5 Chan 22	APP CRS 046°	Rwy Idg TDZE 16 Apt Elev 17	5320
---	------------------------	---	-------------

COPTER ILS or LOC RWY 5

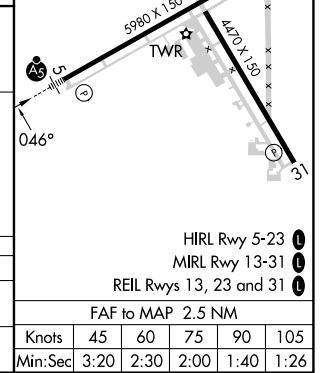
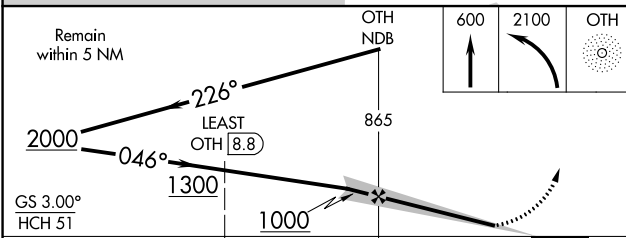
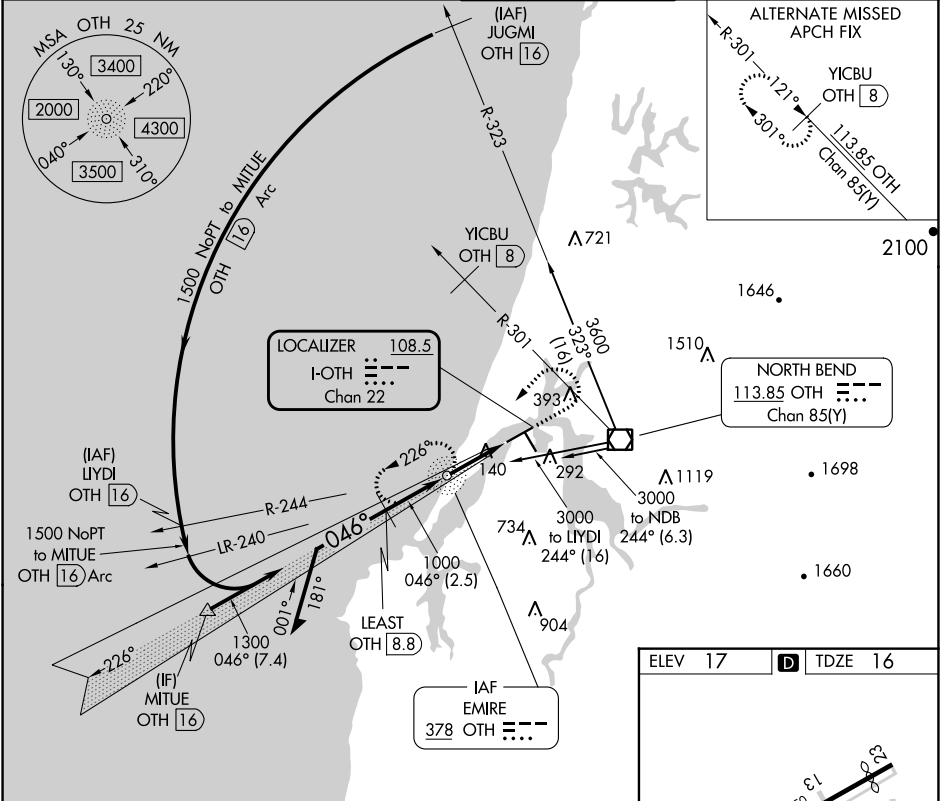
SOUTHWEST OREGON RGNL (OTH)

ADF and DME required.

MALSRS

MISSED APPROACH: Climb to 600 then climbing left turn to 2100 direct OTH NDB and hold, continue climb-in-hold to 2100.

AWOS-3PT 135.075	SEATTLE CENTER 127.55 254.35	NORTH BEND TOWER* 118.45 (CTAF) 0	GND CON 127.1
----------------------------	--	---	-------------------------



CATEGORY	COPTER	
H-ILS 5	216-1/2	200 (200-1/2)
H-LOC 5	400-1/2	384 (400-1/2)

FAF to MAP 2.5 NM					
Knots	45	60	75	90	105
Min:Sec	3:20	2:30	2:00	1:40	1:26

NW-1, 13 JUN 2024 to 11 JUL 2024

NW-1, 13 JUN 2024 to 11 JUL 2024