

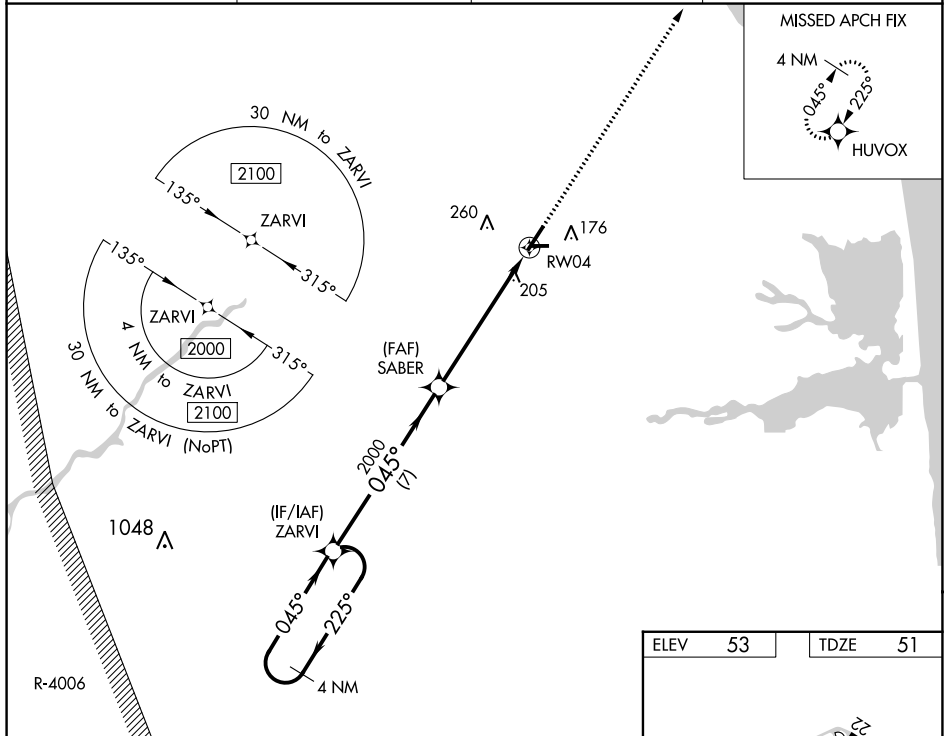
WAAS CH 65621 W04A	APP CRS 045°	Rwy ldg 5130 TDZE 51 Apt Elev 53
--	------------------------	---

RNAV (GPS) RWY 4

DELAWARE COASTAL (GED)

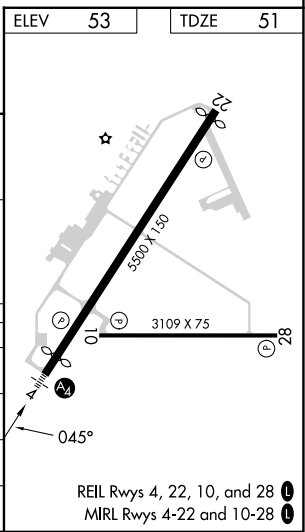
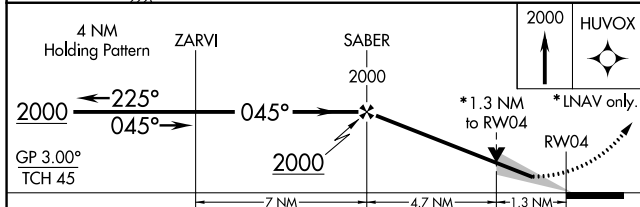
RNP APCH - GPS.	MALS	MISSED APPROACH: Climb to 2000 direct HUVOX and hold.
<p>▼ Rwy 4 helicopter visibility reduction below $\frac{3}{4}$ SM NA. For uncompensated Baro-VNAV systems, LNAV/VNAV NA below -13°C or above 54°C. For inop ALS, increase LNAV/VNAV all Cats and LNAV Cats C/D visibility $\frac{1}{4}$ mile.</p>		

ASOS 118.375	DOVER APP CON 132.425 257.875	GCO 125.55	UNICOM 123.0 (CTAF)
------------------------	---	----------------------	-------------------------------



NE-3, 13 JUN 2024 to 11 JUL 2024

NE-3, 13 JUN 2024 to 11 JUL 2024



CATEGORY	A	B	C	D
LPV DA		355- $\frac{3}{4}$	304 (400- $\frac{3}{4}$)	
LNAV/VNAV DA		503-1 $\frac{1}{4}$	452 (500-1 $\frac{1}{4}$)	
LNAV MDA	520- $\frac{3}{4}$	469 (500- $\frac{3}{4}$)	520-1 $\frac{1}{8}$	469 (500-1 $\frac{1}{8}$)
C CIRCLING	560-1 507 (600-1)	580-1 527 (600-1)	720-1 $\frac{3}{4}$ 667 (700-1 $\frac{3}{4}$)	720-2 667 (700-2)