

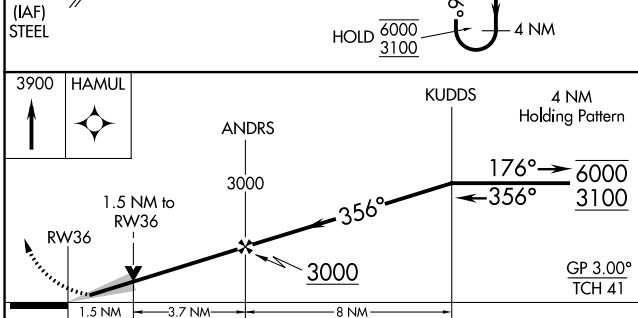
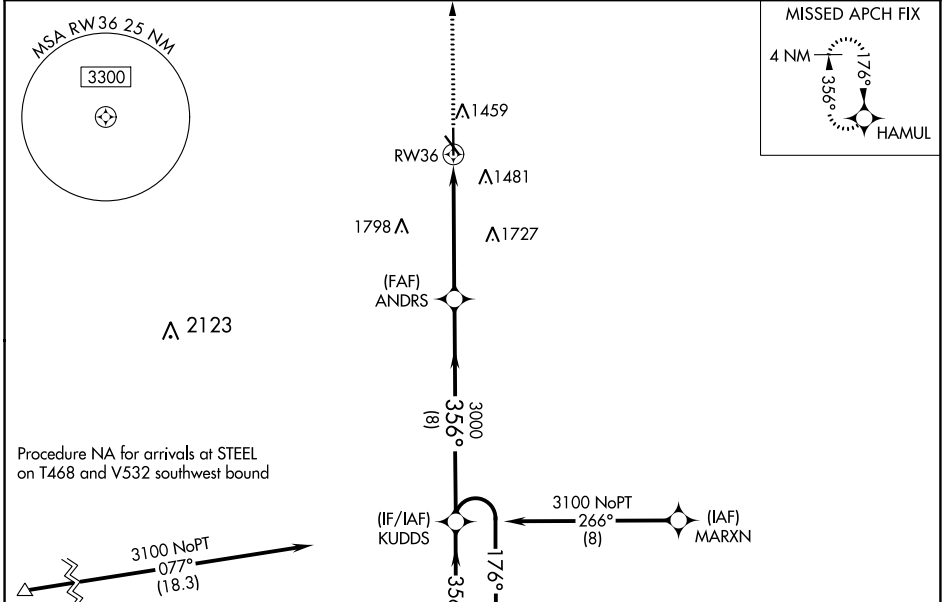
WAAS CH <b>61099</b> <b>W36A</b>	APP CRS <b>356°</b>	Rwy Idg TDZE Apt Elev	<b>5602</b> <b>1307</b> <b>1324</b>
--	------------------------	-----------------------------	---

# RNAV (GPS) RWY 36

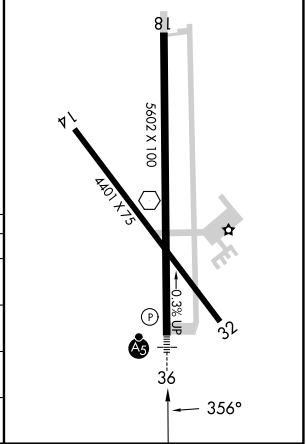
BEATRICE MUNI (BIE)

RNP APCH - GPS.	MALSRL	MISSED APPROACH: Climb to 3900 direct HAMUL and hold.
<p><b>⚠</b> For uncompensated Baro-VNAV systems, LNAV/VNAV NA below -17°C or above 54°C. When ALS inop increase LNAV Cats A/B to 1 SM. Inop table does not apply to LPV and LNAV/VNAV all Cats.</p>		

AWOS-3 <b>125.325</b>	MINNEAPOLIS CENTER <b>126.4 317.7</b>	UNICOM <b>122.8 (CTAF)</b>
--------------------------	--	-------------------------------



ELEV 1324	TDZE 1307
REIL Rwy 14 and 32	
MIRL Rwy 14-32 and 18-36	



CATEGORY	A	B	C	D
LPV DA		1507-3/4	200 (200-3/4)	
LNAV/VNAV DA		1557-3/4	250 (300-3/4)	
LNAV MDA	1840-3/4	533 (600-3/4)	1840-1	533 (600-1)
CIRCLING	1840-1	516 (600-1)	2000-2 676 (700-2)	2100-2 1/2 776 (800-2 1/2)

NC-2, 13 JUN 2024 to 11 JUL 2024

NC-2, 13 JUN 2024 to 11 JUL 2024