

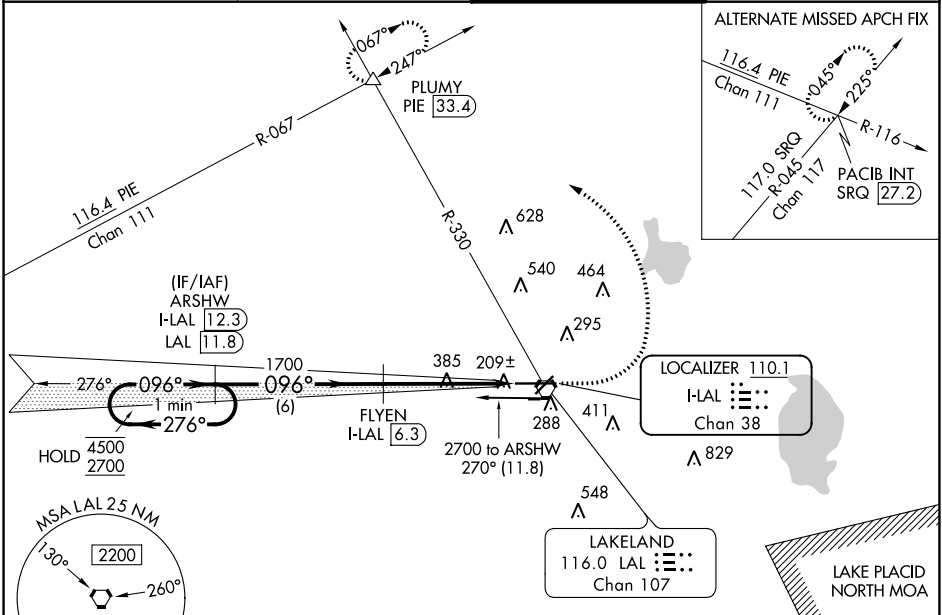
LOC/DME I-LAL 110.1 Chan 38	APP CRS 096°	Rwy Idg TDZE 132 Apt Elev 142	8500
--	------------------------	---	-------------

ILS RWY 10 (CAT II & III)

LAKELAND LINDER INTL (LAL)

DME required.	ALSIF-2	MISSED APPROACH: Climb to 1000 then climbing left turn to 2000 on heading 292° and on LAL VORTAC R-330 to PLUMY INT/PIE 33.4 DME and hold.
---------------	---------	--

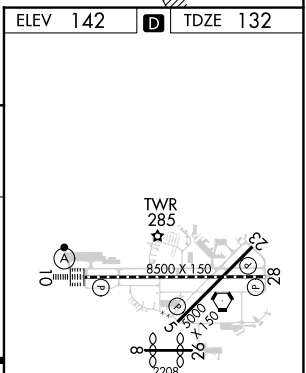
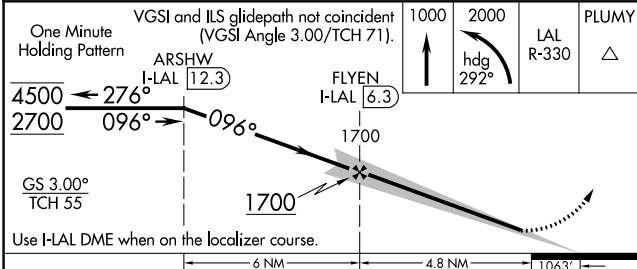
ATIS 118.025	TAMPA APP CON 120.65 290.3	LAKELAND TOWER 124.5 236.775	GND CON 121.4
------------------------	--------------------------------------	--	-------------------------



SE-3, 13 JUN 2024 to 11 JUL 2024

SE-3, 13 JUN 2024 to 11 JUL 2024

ELEV 142	TDZE 132
----------	----------



CATEGORY	A	B	C	D
S-ILS 10	CAT II	RA 101/12	100 DA 232	
S-ILS 10	CAT III	RVR 600		

CATEGORY II & III ILS - SPECIAL AIRCREW & AIRCRAFT CERTIFICATION REQUIRED

TDZ/CL Rwy 10
HIRL Rwys 5-23 and 10-28