

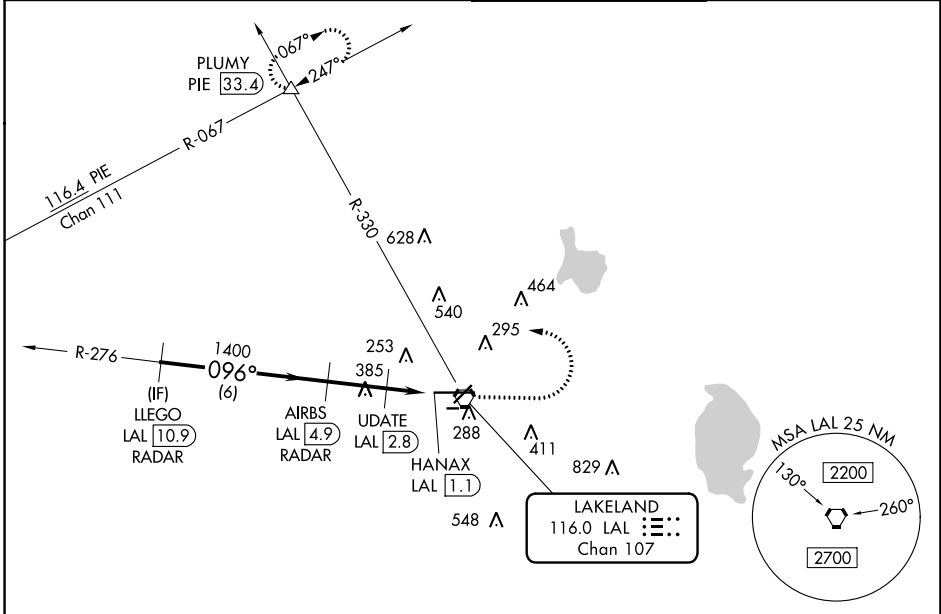
| | | |
|---|------------------------|---|
| VORTAC LAL 116.0 Chan 107 | APP CRS 096° | Rwy Idg 8500 TDZE 132 Apt Elev 142 |
|---|------------------------|---|

VOR RWY 10

LAKELAND LINDER INTL (LAL)

| | | | |
|--|---|------------|---|
| RADAR required for procedure entry. DME or RADAR required. | | ALSF-2 | MISSED APPROACH: Climb to 1000 then climbing left turn to 2000 on heading 294° and on LAL VORTAC R-330 to PLUMY INT/ PIE 33.4 DME and hold. |
| | Circling NA to Rwys 8 and 26. Circling Rwy 28 NA at night. For inop ALS, increase S-10 Cat C/D visibility to 1 1/2 SM; increase UDATE fix minimums S-10 Cat C/D visibility to RVR 6000. | | |

| | | | |
|------------------------|--------------------------------------|--|-------------------------|
| ATIS 118.025 | TAMPA APP CON 120.65 290.3 | LAKELAND TOWER 124.5 236.775 | GND CON 121.4 |
|------------------------|--------------------------------------|--|-------------------------|



SE-3, 13 JUN 2024 to 11 JUL 2024

SE-3, 13 JUN 2024 to 11 JUL 2024

| | | | | | |
|---|----------------------|----------------------|------------------------------|------------------------------|------|
| ELEV 142 | | TDZE 132 | | | |
| <p>△ 1667</p> <p>LLEGO LAL 10.9 RADAR</p> <p>AIRBS LAL 4.9 RADAR</p> <p>UPDATE LAL 2.8</p> <p>HANAX LAL 1.1</p> <p>PLUMY LAL △</p> <p>VGSI and descent angles not coincident (VGSI Angle 3.00/TCH 71).</p> <p>2000 → 1400 → 700</p> <p>096° heading</p> <p>294° hdg</p> <p>2.98° TCH 52</p> <p>6 NM, 2.1 NM, 0.7, 1.1</p> | | | | | |
| CATEGORY | A | B | C | D | |
| S-10 | 700/24 | 568 (600-1/2) | 700-1 1/4 | 568 (600-1 1/4) | |
| CIRCLING | 700-1 | 558 (600-1) | 720-1 1/2 578 (600-1 1/2) | 840-2 1/4 698 (700-2 1/4) | |
| UPDATE FIX MINIMUMS | | | | | |
| S-10 | 540/24 | 408 (400-1/2) | 540/40 | 408 (400-3/4) | |
| CIRCLING | 600-1 458 (500-1) | 660-1 518 (600-1) | 720-1 1/2 578 (600-1 1/2) | 840-2 1/4 698 (700-2 1/4) | |
| TWR 285 | | | | | |
| 8500 X 150 | | | | | |
| 2208 X 60 | | | | | |
| 096° | | | | | |
| TDZ/CL Rwy 10 | | | | | |
| HIRL Rwys 5-23 and 10-28 | | | | | |
| FAF to MAP 3.8 NM | | | | | |
| Knots | 60 | 90 | 120 | 150 | 180 |
| Min:Seq | 3:48 | 2:32 | 1:54 | 1:31 | 1:16 |