

WAAS CH <b>72840</b> <b>W02A</b>	APP CRS <b>025°</b>	Rwy ldg TDZE Apt Elev	<b>5529</b> <b>3906</b> <b>3908</b>
--	------------------------	-----------------------------	---

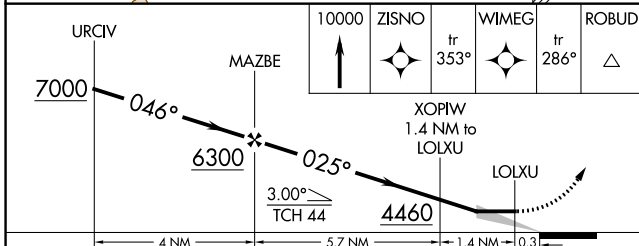
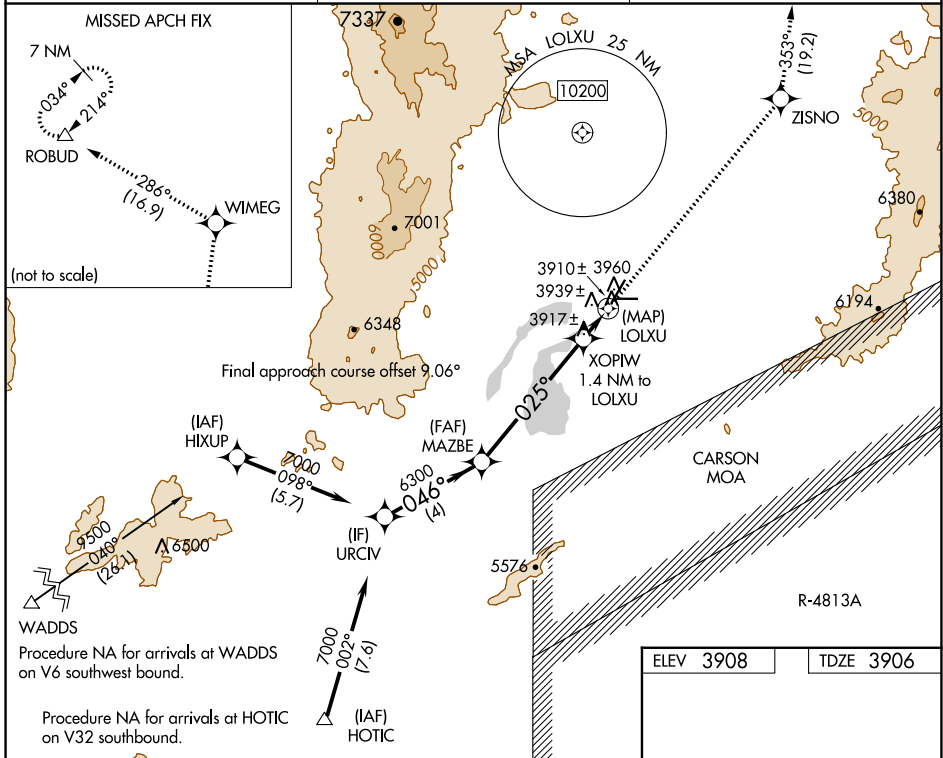
# RNAV (GPS) RWY 2

DERBY FLD (LOL)

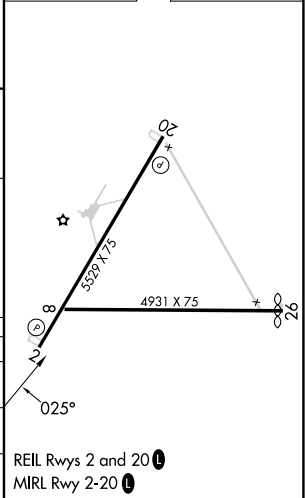
**⚠** Circling NA northwest of Rwy 2-20.  
DME/DME RNP-0.3 NA.

**⚠** MISSED APPROACH: Climb to 10000 direct ZISNO and on track 353° to WIMEG and on track 286° to ROBUD and hold, continue climb-in-hold to 10000.

ASOS <b>120.675</b>	OAKLAND CENTER <b>128.8 285.5</b>	UNICOM <b>122.8 (CTAF) 0</b>
------------------------	--------------------------------------	---------------------------------



ELEV 3908	TDZE 3906
-----------	-----------



CATEGORY	A	B	C	D
LP MDA		4160-1	254 (300-1)	
LNAV MDA		4200-1	294 (300-1)	
<b>C</b> CIRCLING	4280-1 372 (400-1)	4360-1 452 (500-1)	4540-1¾ 632 (700-1¾)	4680-2½ 772 (800-2½)

REIL Rwy 2 and 20 **0**  
MIRL Rwy 2-20 **0**

SW-4, 13 JUN 2024 to 11 JUL 2024

SW-4, 13 JUN 2024 to 11 JUL 2024