

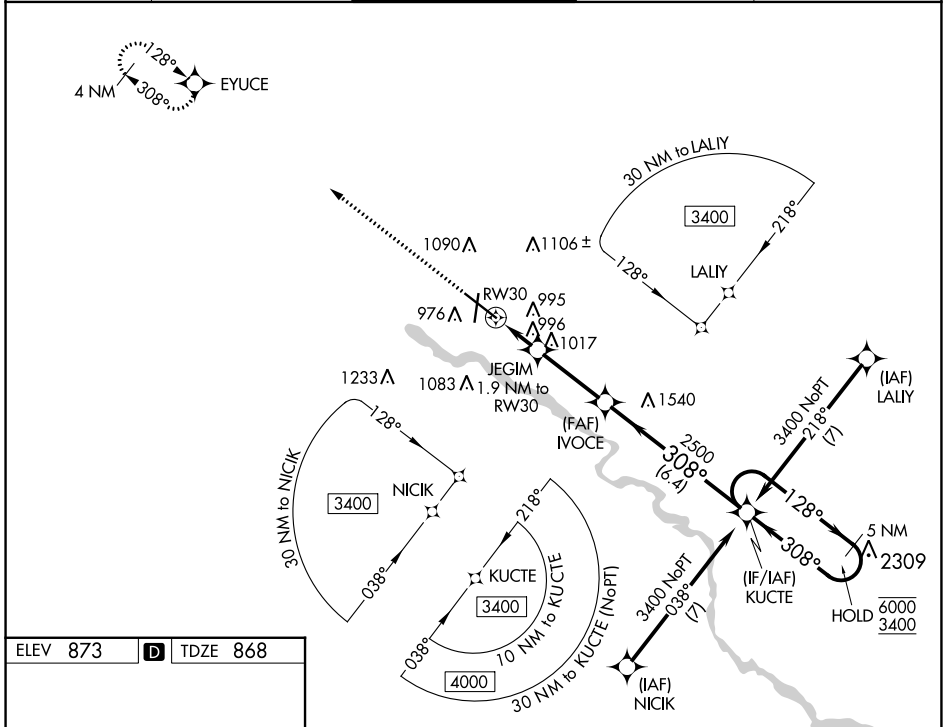
WAAS CH 78201 W30A	APP CRS 308°	Rwy Idg TDZE Apt Elev	8399 868 873
--	------------------------	-----------------------------	---

RNAV (GPS) RWY 30

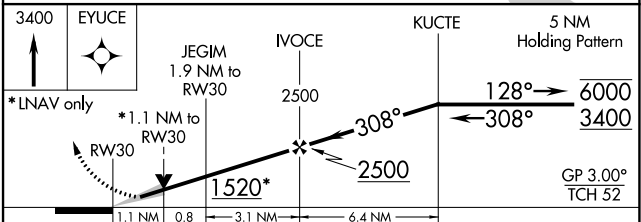
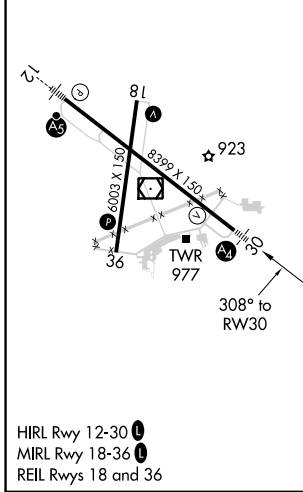
WATERLOO RGNL (A.L.O)

RNP APCH.	MALS	MISSED APPROACH: Climb to 3400 direct EYUCE and hold.
<p>⚠ For uncompensated Baro-VNAV systems, LNAV/VNAV NA below -20°C or above 54°C. Inop table does not apply LPV all Cats.</p> <p>⚠ For inop ALS, increase LNAV/VNAV all Cats visibility to 7/5 SM.</p>	<p>⦿ =</p>	

ATIS 120.65	WATERLOO APP CON* 118.9 251.15	WATERLOO TOWER* 125.075 (CTAF) 0 257.8	GND CON 121.9 269.1	UNICOM 122.95
-----------------------	--	--	-------------------------------	-------------------------



ELEV 873	D	TDZE 868
----------	---	----------



CATEGORY	A	B	C	D
LPV DA		1068-3/4	200 (200-3/4)	
LNAV/VNAV DA		1145-3/4	277 (300-3/4)	
LNAV MDA	1260-3/4	392 (400-3/4)	1260-7/8	392 (400-7/8)
<input checked="" type="checkbox"/> CIRCLING	1360-1 487 (500-1)	1400-1 527 (600-1)	1480-1 3/4 607 (700-1 3/4)	1600-2 1/4 727 (800-2 1/4)