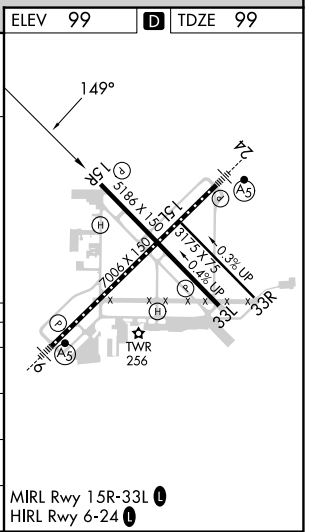
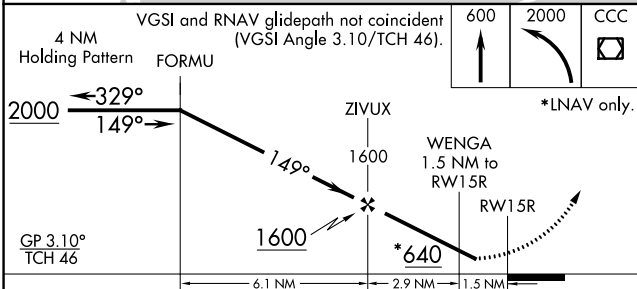
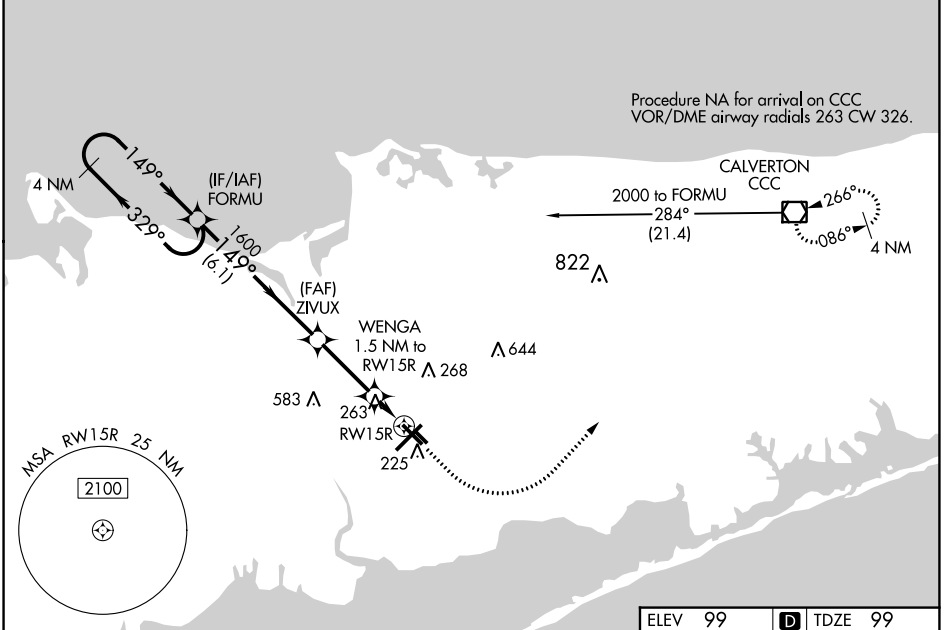


| | | |
|--|------------------------|---|
| WAAS CH 53620 W15A | APP CRS 149° | Rwy Idg 5186 TDZE 99 Apt Elev 99 |
|--|------------------------|---|

RNAV (GPS) RWY 15R

LONG ISLAND MAC ARTHUR (ISP)

| | | | | | |
|--|--|---|-------------------------|---------------------------|-------------------------|
| <p>⚠ Baro-VNAV NA when using Shirley altimeter setting. For uncompensated Baro-VNAV systems, procedure NA below -1.4°C (7°F) or above 46°C (115°F). DME/DME RNP-0.3 NA. When local altimeter setting not received, use Shirley altimeter setting and increase LPV DA to 442 feet, LNAV/VNAV DA to 575 feet and LNAV/VNAV visibility all Cats 1/8 mile; all MDAs 40 feet, LNAV Cats C/D visibility 1/8 mile, and Circling Cats C/D visibility 1/4 mile. Helicopter visibility reduction below 3/4 SM NA.</p> | | <p>MISSED APPROACH: Climb to 600 then climbing left turn to 2000 direct CCC VOR/DME and hold.</p> | | | |
| ATIS 120.725 | NEW YORK APP CON 120.05 343.75 | LONG ISLAND TOWER* 119.3 (CTAF) 335.5 | GND CON 135.3 | CLNC DEL 121.85 | UNICOM 122.95 |



| CATEGORY | A | B | C | D |
|--------------|----------------------|----------------------|------------------------------|------------------------------|
| LPV DA | 414-1 | | 315 (400-1) | |
| LNAV/VNAV DA | 547-1 3/8 | | 448 (500-1 3/8) | |
| LNAV MDA | 520-1 | 421 (500-1) | 520-1 1/4 | 421 (500-1 1/4) |
| CIRCLING | 600-1 501 (600-1) | 660-1 561 (600-1) | 660-1 1/2 561 (600-1 1/2) | 960-2 3/4 861 (900-2 3/4) |

NE-2, 13 JUN 2024 to 11 JUL 2024

NE-2, 13 JUN 2024 to 11 JUL 2024