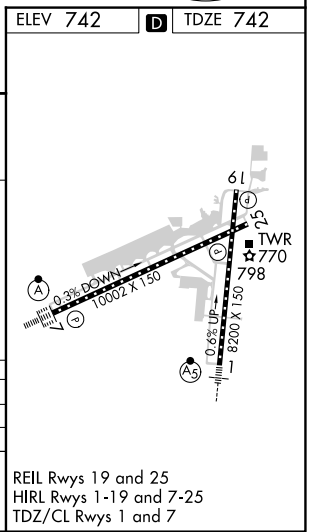
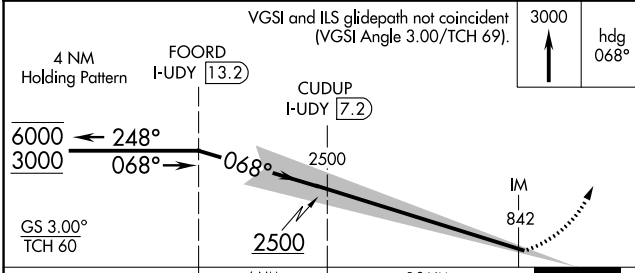
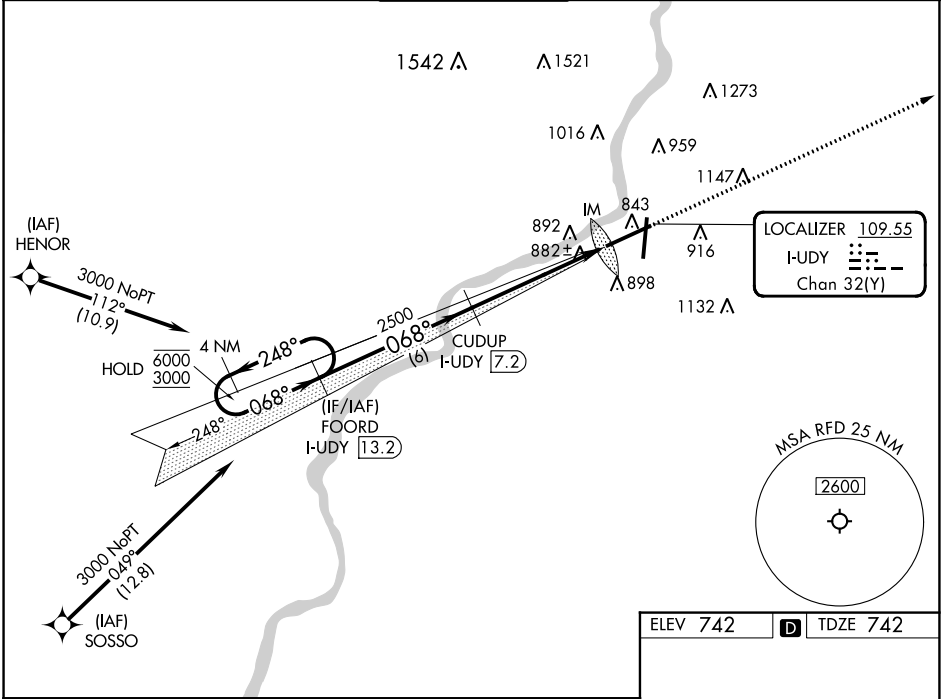


LOC/DME I-UDY 109.55 Chan 32 (Y)	APP CRS 068°	Rwy Idg 10002 TDZE 742 Apt Elev 742
--	------------------------	--

ILS RWY 7 (CAT II & III)

CHICAGO/ROCKFORD INTL (RFD)

RNP APCH - GPS. From HENOR or SOSSO. RADAR required.		ALSF-2	MISSED APPROACH: Climb to 3000 on heading 068°. Expect RADAR vectors. (RADAR required).	
ATIS 127.6	ROCKFORD APP CON 121.0 327.0	ROCKFORD TOWER 118.1 290.375	GND CON 121.9 290.375	CLNC DEL 119.25



CATEGORY	A	B	C	D
S-ILS 7	CAT II RA 114/12 100 DA 842			
S-ILS 7	CAT III RVR 06			

CATEGORY II & III ILS - SPECIAL AIRCREW & AIRCRAFT CERTIFICATION REQUIRED

REIL Rwy 19 and 25
HIRL Rwy 1-19 and 7-25
TDZ/CL Rwy 1 and 7

EC-3, 13 JUN 2024 to 11 JUL 2024

EC-3, 13 JUN 2024 to 11 JUL 2024