

APP CRS	Rwy Idg	10000
216°	TDZE	1166
	Apt Elev	1189

RNAV (RNP) Z RWY 22

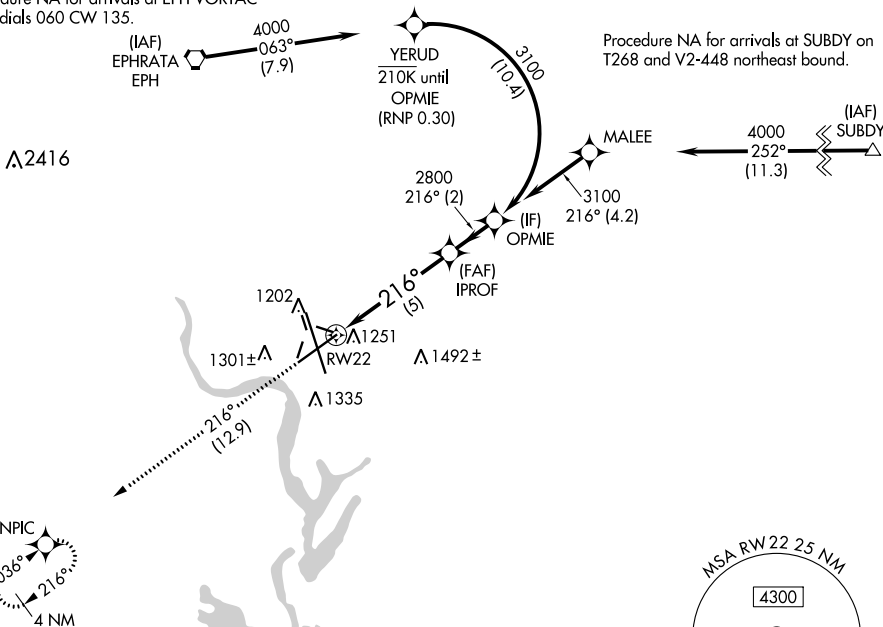
GRANT COUNTY INTL (MWH)

RNP AR APCH-GPS.		MISSED APPROACH: Climb to 4000 on track 216° to ONPIC and hold.	
<p>▼ For uncompensated Baro-VNAV systems, procedure NA below</p> <p>▲ -1.5°C or above 54°C.</p>			

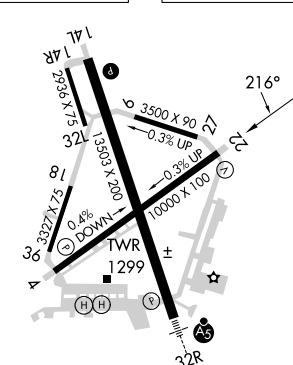
ATIS 119.05	GRANT COUNTY APP CON * 126.4 379.95	GRANT COUNTY TOWER * 118.25 (CTAF) 0 257.8 (EAST) 128.0 257.8 (WEST)	GND CON 121.9	UNICOM 122.95
-----------------------	---	--	-------------------------	-------------------------

Procedure NA for arrivals at EPH VORTAC on radials 060 CW 135.

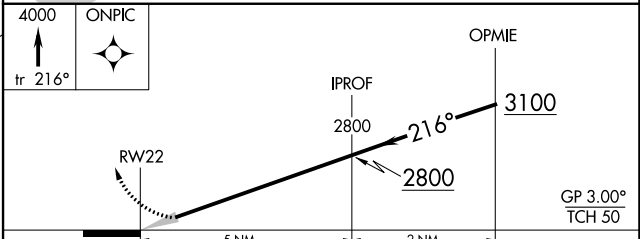
Procedure NA for arrivals at SUBDY on T268 and V2-448 northeast bound.



ELEV 1189	D	TDZE 1166
-----------	----------	-----------



REIL Rwy 4
 REIL Rwy 14L and 22
 HIRL Rwy 14L-32R
 MIRL Rwy 4-22 and 18-36



CATEGORY	A	B	C	D
RNP 0.10 DA	1421- ³ / ₄ 255 (300- ³ / ₄)			
RNP 0.30 DA	1508-1 342 (400-1)			

AUTHORIZATION REQUIRED

NW-1, 13 JUN 2024 to 11 JUL 2024

NW-1, 13 JUN 2024 to 11 JUL 2024