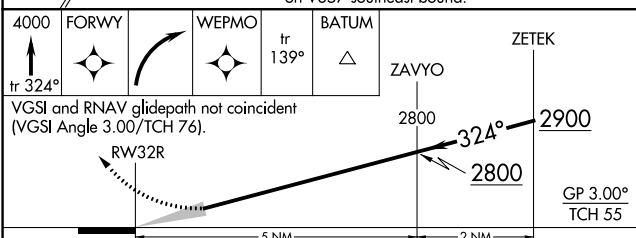
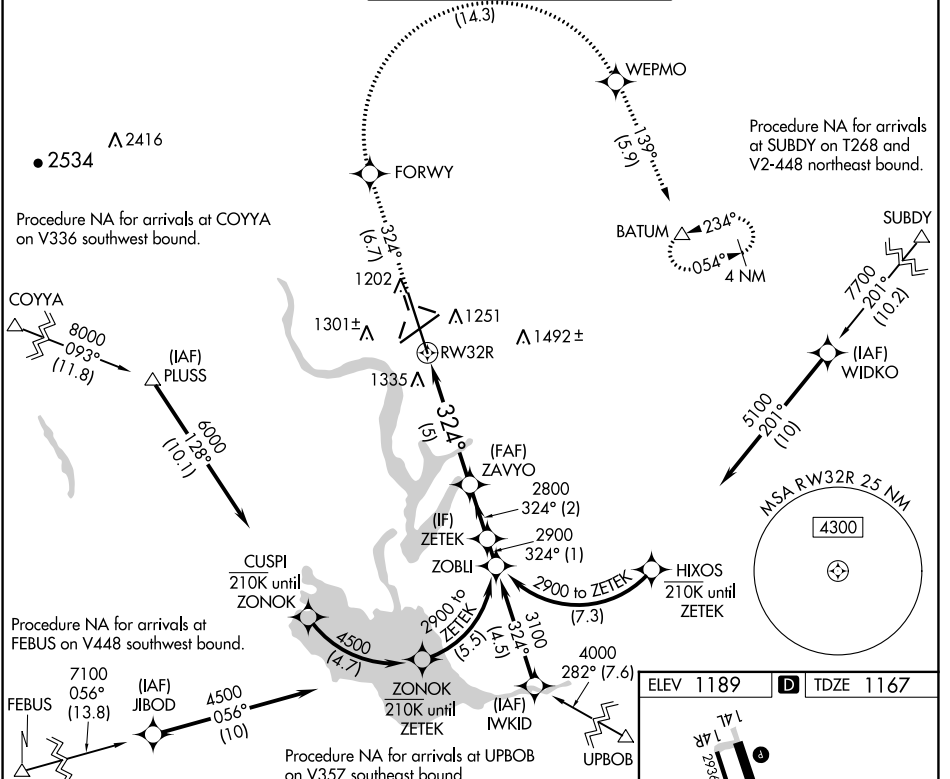


**RNAV (RNP) Z RWY 32R**  
GRANT COUNTY INTL (MWH)

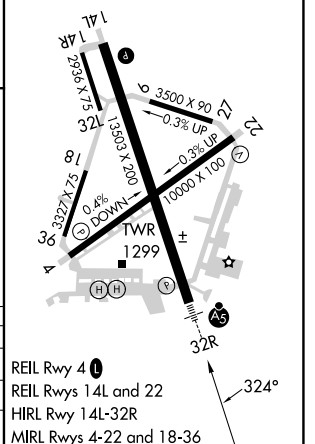
APP CRS <b>324°</b>	Rwy Idg <b>13492</b>
	TDZE <b>1167</b>
	Apt Elev <b>1189</b>

RNP AR APCH-GPS. <b>▽</b> For uncompensated Baro-VNAV systems, procedure NA below -15°C or above 54°C. For inoperative ALS increase RNP 0.10 visibility all Cats to RVR 4000, increase RNP 0.30 visibility all Cats to RVR 6000. <b>⚠</b>	MALSR 	MISSED APPROACH: Climb to 4000 on track 324° to FORWY right turn to WEPMO and track 139° to BATUM and hold.
---	-----------	---

ATIS <b>119.05</b>	GRANT COUNTY APP CON ★ <b>126.4 379.95</b>	GRANT COUNTY TOWER ★ <b>118.25 (CTAF) 257.8 (EAST)</b> <b>128.0 257.8 (WEST)</b>	GND CON <b>121.9</b>	UNICOM <b>122.95</b>
-----------------------	---	--	-------------------------	-------------------------



ELEV 1189	TDZE 1167
-----------	-----------



CATEGORY	A	B	C	D
RNP 0.10 DA	1417/24	250 (300-½)		
RNP 0.30 DA	1564/35	397 (400-⅔)		

**AUTHORIZATION REQUIRED**

NW-1, 13 JUN 2024 to 11 JUL 2024

NW-1, 13 JUN 2024 to 11 JUL 2024