

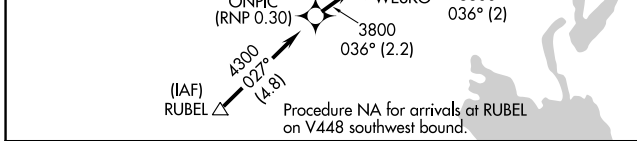
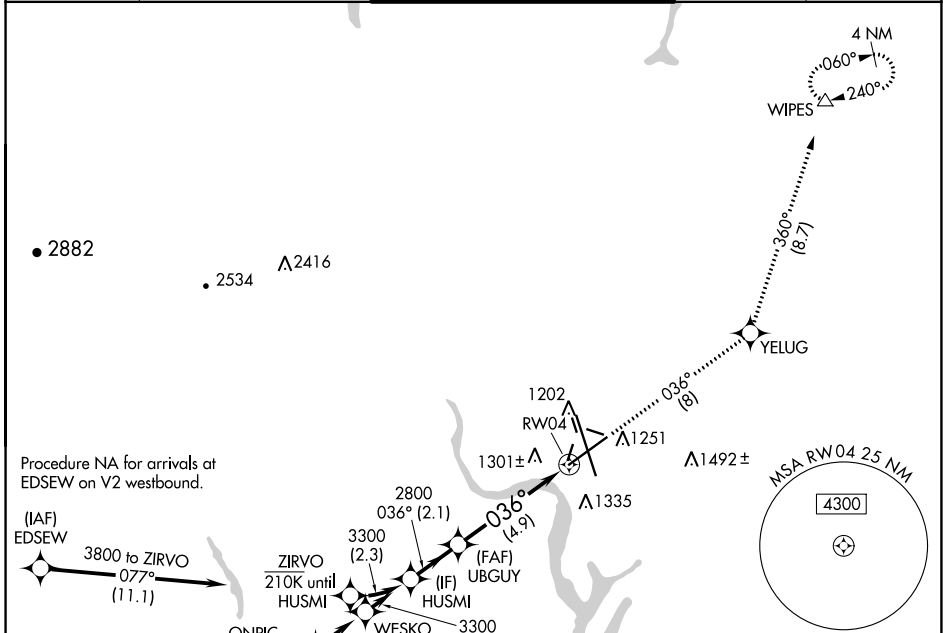
APP CRS 036°	Rwy Idg 10000
	TDZE 1189
	Apt Elev 1189

RNAV (RNP) Z RWY 4

GRANT COUNTY INTL (MWH)

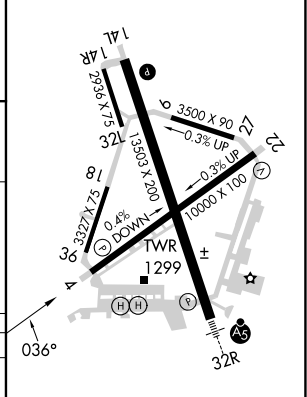
RNP AR APCH-GPS.		MISSED APPROACH: Climb to 4000 on track 036° to YELUG and track 360° to WIPES and hold.	
<p>▼ For uncompensated Baro-VNAV systems, procedure NA below -15°C or above 54°C.</p>			

ATIS 119.05	GRANT COUNTY APP CON * 126.4 379.95	GRANT COUNTY TOWER * 118.25 (CTAF) 0 257.8 (EAST) 128.0 257.8 (WEST)	GND CON 121.9	UNICOM 122.95
-----------------------	---	--	-------------------------	-------------------------



ELEV 1189	D TDZE 1189
-----------	--------------------

HUSMI	4000	YELUG	WIPES
3300		tr 036°	tr 360°
UBGYU			△
2800			
GP 3.00°			
TCH 50			
	2.1 NM	4.9 NM	



CATEGORY	A	B	C	D
RNP 0.10 DA	1549-1 360 (400-1)			
RNP 0.30 DA	1644-1 ³ / ₈ 455 (500-1 ³ / ₈)			
AUTHORIZATION REQUIRED				

REIL Rwy 4
REIL Rwy 14L and 22
HIRL Rwy 14L-32R
MIRL Rwy 4-22 and 18-36

NW-1, 13 JUN 2024 to 11 JUL 2024

NW-1, 13 JUN 2024 to 11 JUL 2024