

WAAS CH 42809 W04A	APP CRS 036°	Rwy ldg 10000 TDZE 1189 Apt Elev 1189
--	------------------------	--

RNAV (GPS) Y RWY 4

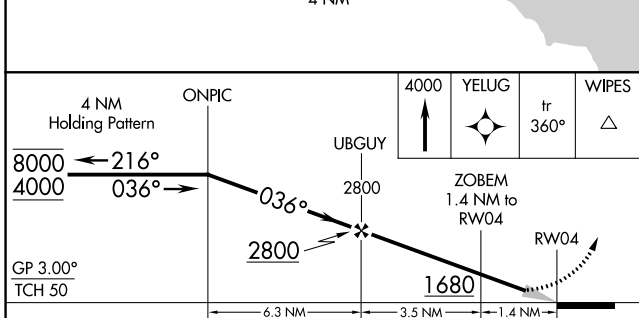
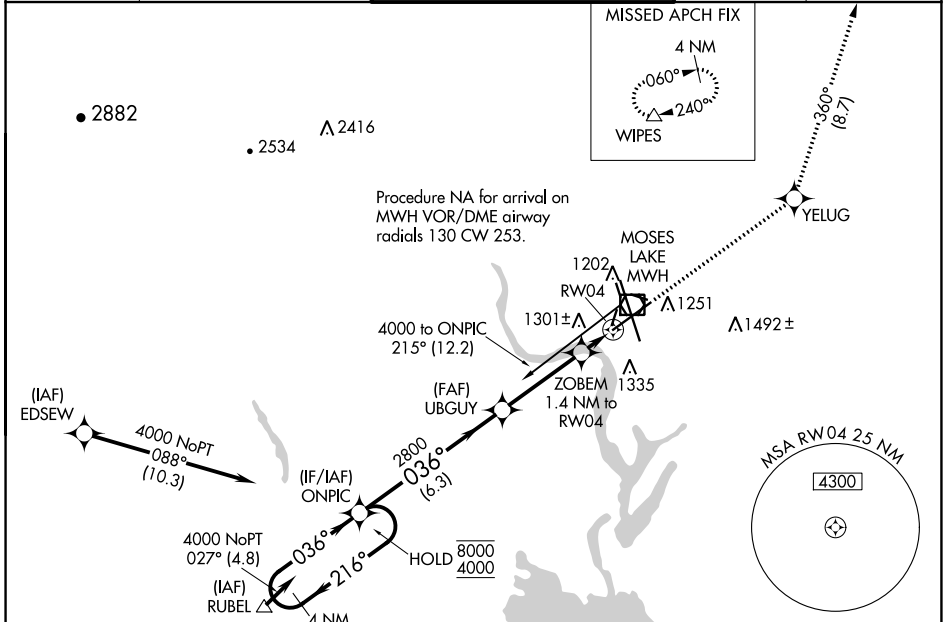
GRANT COUNTY INTL (MWH)

RNP APCH-GPS.

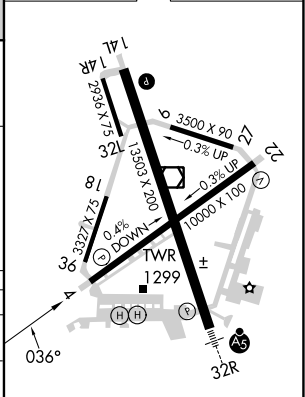
⚠ Circling Rwy 9/27, 18/36 NA at night. For uncompensated Baro-VNAV systems, LNAV/VNAV NA below -15°C or above 54°C.

MISSED APPROACH: Climb to 4000 direct YELUG and on track 360° to WIPES and hold.

ATIS 119.05	GRANT COUNTY APP CON * 126.4 379.95	GRANT COUNTY TOWER * 118.25 (CTAF) 0 257.8 (EAST) 128.0 257.8 (WEST)	GND CON 121.9	UNICOM 122.95
-----------------------	---	--	-------------------------	-------------------------



ELEV 1189	D	TDZE 1189
-----------	---	-----------



CATEGORY	A	B	C	D
LPV DA		1389-3/4	200 (200-3/4)	
LNAV/VNAV DA		1461-7/8	272 (300-7/8)	
LNAV MDA		1560-1	371 (400-1)	
C CIRCLING	1660-1	471 (500-1)	1680-1 1/2 491 (500-1 1/2)	1820-2 631 (700-2)

REIL Rwy 4
REIL Rwy 14L and 22
HIRL Rwy 14L-32R
MIRL Rwy 4-22 and 18-36

NW-1, 13 JUN 2024 to 11 JUL 2024

NW-1, 13 JUN 2024 to 11 JUL 2024