

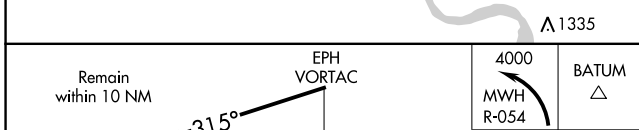
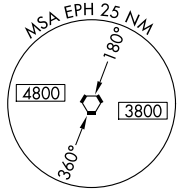
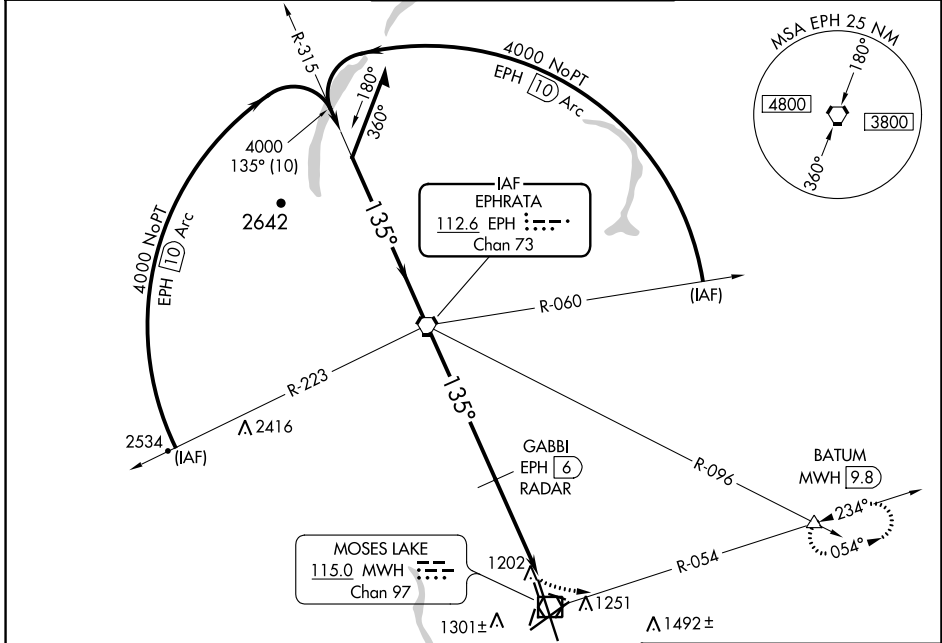
VORTAC EPH 112.6 Chan 73	APP CRS 135°	Rwy Idg 13503 TDZE 1169 Apt Elev 1189
---------------------------------------	------------------------	--

VOR-1 RWY 14L

GRANT COUNTY INTL (MWH)

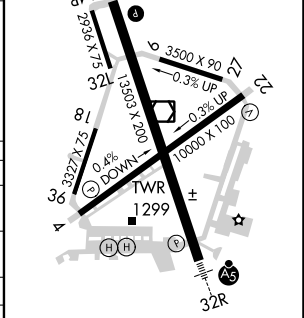
⚠ MISSED APPROACH: Climbing left turn to 4000 via MWH R-054 to BATUM INT/MWH 9.8 DME and hold.

ATIS 119.05	GRANT COUNTY APP CON * 126.4 379.95	GRANT COUNTY TOWER * 118.25 (CTAF) 257.8 (EAST) 128.0 257.8 (WEST)	GND CON 121.9	UNICOM 122.95
-----------------------	---	---	-------------------------	-------------------------



ELEV 1189	D TDZE 1169
------------------	---------------------------

Remain within 10 NM	315°	135°	4000
4000	135°	4000	
		1840	
		6 NM	4 NM



CATEGORY	A	B	C	D
S-14L	1840-1 671 (700-1)		1840-2 671 (700-2)	1840-2 1/4 671 (700-2 1/4)
CIRCLING	1840-1 651 (700-1)		1840-2 651 (700-2)	1840-2 1/4 651 (700-2 1/4)
GABBI DME or RADAR MINIMUMS				
S-14L	1640-1 471 (500-1)		1640-1 1/4 471 (500-1 1/4)	1640-1 1/2 471 (500-1 1/2)
CIRCLING	1680-1 491 (500-1)		1680-1 1/2 491 (500-1 1/2)	1820-2 631 (700-2)

FAF to MAP 10 NM					
Knots	60	90	120	150	180
Min:Sec	10:00	6:40	5:00	4:00	3:20

NW-1, 13 JUN 2024 to 11 JUL 2024

NW-1, 13 JUN 2024 to 11 JUL 2024