

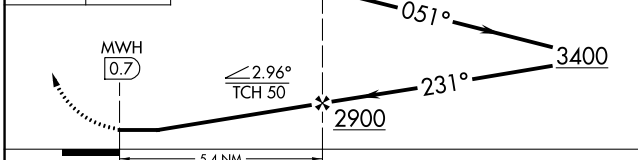
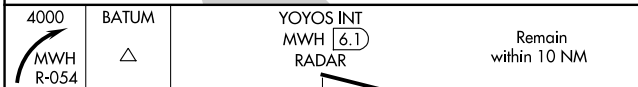
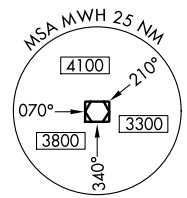
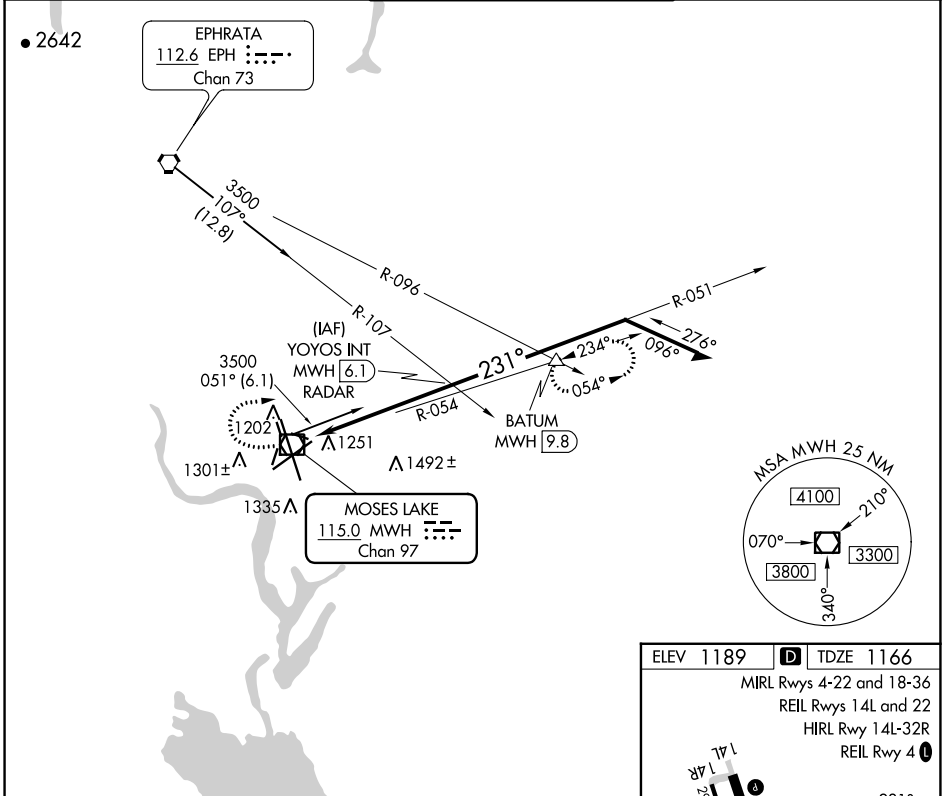
VOR/DME MWH 115.0 Chan 97	APP CRS 231°	Rwy ldg 10000 TDZE 1166 Apt Elev 1189
---	------------------------	--

VOR RWY 22

GRANT COUNTY INTL (MWH)

MISSSED APPROACH: Climbing right turn to 4000 via MWH R-054 to BATUM INT/MWH 9.8 DME and hold.

ATIS 119.05	GRANT COUNTY APP CON * 126.4 379.95	GRANT COUNTY TOWER * 118.25 (CTAF) 257.8 (EAST) 128.0 257.8 (WEST)	GND CON 121.9	UNICOM 122.95
-----------------------	---	--	-------------------------	-------------------------



CATEGORY	A	B	C	D
S-22	1760-1 594 (600-1)		1760-1½ 594 (600-1½)	1760-1¾ 594 (600-1¾)
CIRCLING	1760-1 571 (600-1)		1760-1½ 571 (600-1½)	1820-2 631 (700-2)

ELEV 1189 **D** TDZE 1166

MIRL Rwys 4-22 and 18-36
REIL Rwys 14L and 22
HIRL Rwy 14L-32R
REIL Rwy 4

FAF to MAP 5.4 NM

Knots	60	90	120	150	180
Min:Sec	5:24	3:36	2:42	2:10	1:48

NW-1, 13 JUN 2024 to 11 JUL 2024

NW-1, 13 JUN 2024 to 11 JUL 2024