

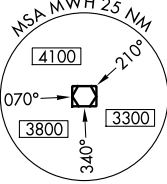
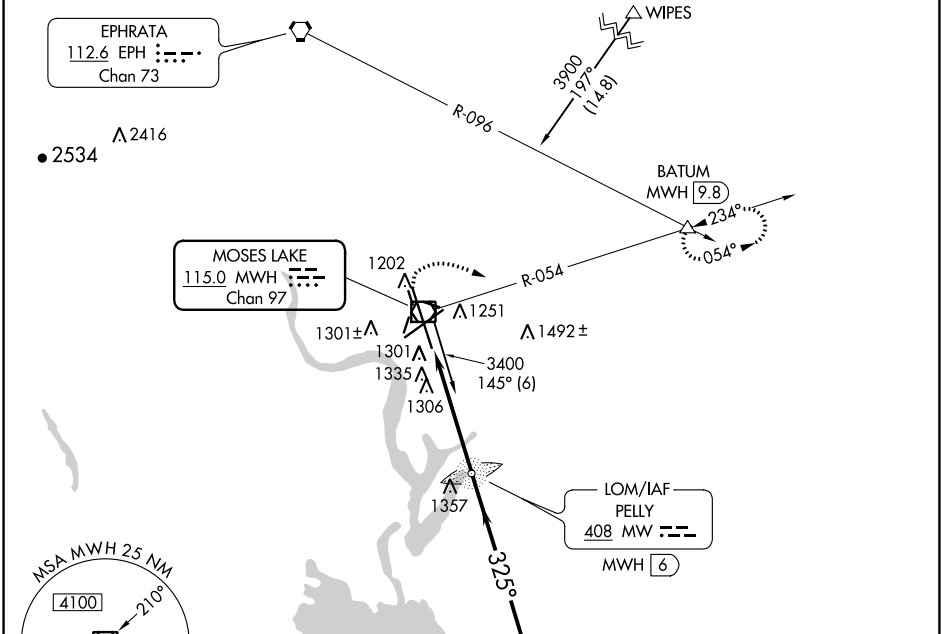
VOR/DME MWH <b>115.0</b> Chan <b>97</b>	APP CRS <b>325°</b>	Rwy Ldg <b>13492</b> TDZE <b>1167</b> Apt Elev <b>1189</b>
---	------------------------	--

# VOR RWY 32R

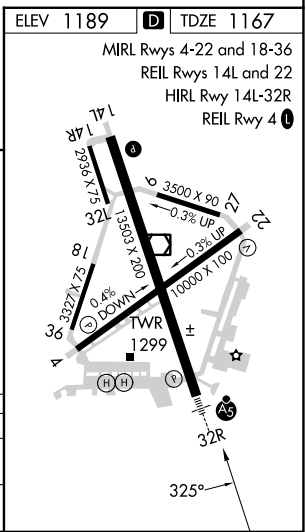
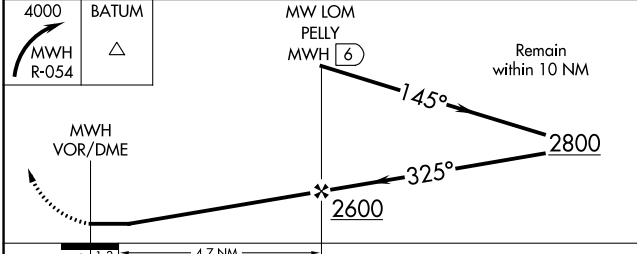
GRANT COUNTY INTL (MWH)

		MISSED APPROACH: Climbing right turn to 4000 via MWH R-054 to BATUM INT/MWH 9.8 DME and hold.		
		ATIS <b>119.05</b>	GRANT COUNTY APP CON * <b>126.4 379.95</b>	GRANT COUNTY TOWER * <b>118.25</b> (CTAF) <b>257.8</b> (EAST) <b>128.0 257.8</b> (WEST)

ATIS <b>119.05</b>	GRANT COUNTY APP CON * <b>126.4 379.95</b>	GRANT COUNTY TOWER * <b>118.25</b> (CTAF) <b>257.8</b> (EAST) <b>128.0 257.8</b> (WEST)	GND CON <b>121.9</b>	UNICOM <b>122.95</b>
-----------------------	---	---	-------------------------	-------------------------



## ADF or DME REQUIRED



CATEGORY	A	B	C	D
S-32R	1620/24	453 (500-½)	1620/40 453 (500-¾)	1620/50 453 (500-1)
CIRCLING	1680-1	491 (500-1)	1680-1½ 491 (500-1½)	1820-2 631 (700-2)

NW-1, 13 JUN 2024 to 11 JUL 2024

NW-1, 13 JUN 2024 to 11 JUL 2024