

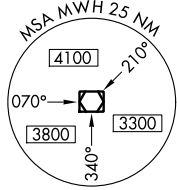
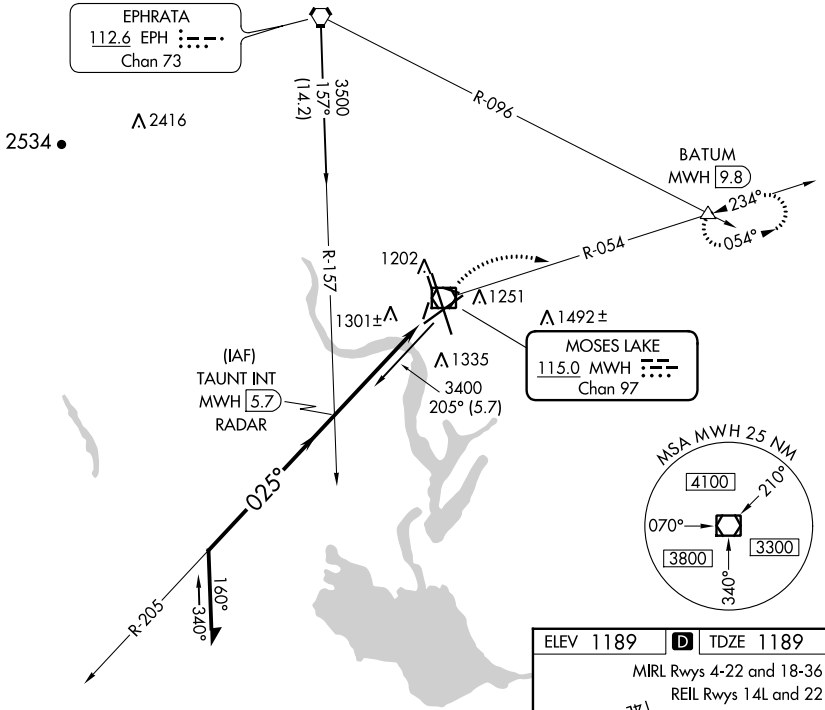
VOR/DME MWH <b>115.0</b> Chan <b>97</b>	APP CRS <b>025°</b>	Rwy Idg <b>10000</b> TDZE <b>1189</b> Apt Elev <b>1189</b>
---	------------------------	--

# VOR RWY 4

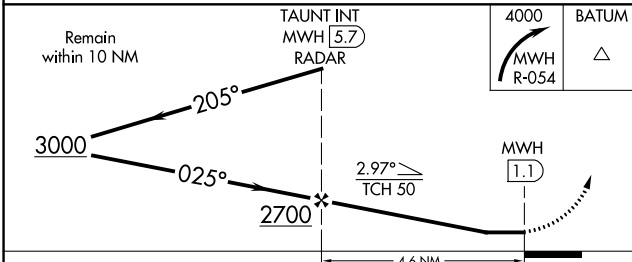
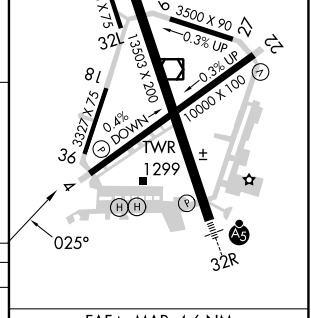
GRANT COUNTY INTL (MWH)

MISSED APPROACH: Climbing right turn to 4000 via MWH R-054 to BATUM INT/MWH 9.8 DME and hold.

ATIS <b>119.05</b>	GRANT COUNTY APP CON * <b>126.4 379.95</b>	GRANT COUNTY TOWER * <b>118.25</b> (CTAF) <b>257.8</b> (EAST) <b>128.0 257.8</b> (WEST)	GND CON <b>121.9</b>	UNICOM <b>122.95</b>
-----------------------	---	---	-------------------------	-------------------------



ELEV 1189	TDZE 1189
MIRL Rwy 4-22 and 18-36	REIL Rwy 14L and 22
HIRL Rwy 14L-32R	REIL Rwy 4



CATEGORY	A	B	C	D
S-4	1620-1 431 (500-1)	1620-1½ 431 (500-1½)	1620-1½ 431 (500-1½)	1620-1½ 431 (500-1½)
CIRCLING	1680-1 491 (500-1)	1680-1½ 491 (500-1½)	1820-2 631 (700-2)	1820-2 631 (700-2)

FAF to MAP 4.6 NM					
Knots	60	90	120	150	180
Min:Sec	4:36	3:04	2:18	1:50	1:32

NW-1, 13 JUN 2024 to 11 JUL 2024

NW-1, 13 JUN 2024 to 11 JUL 2024