

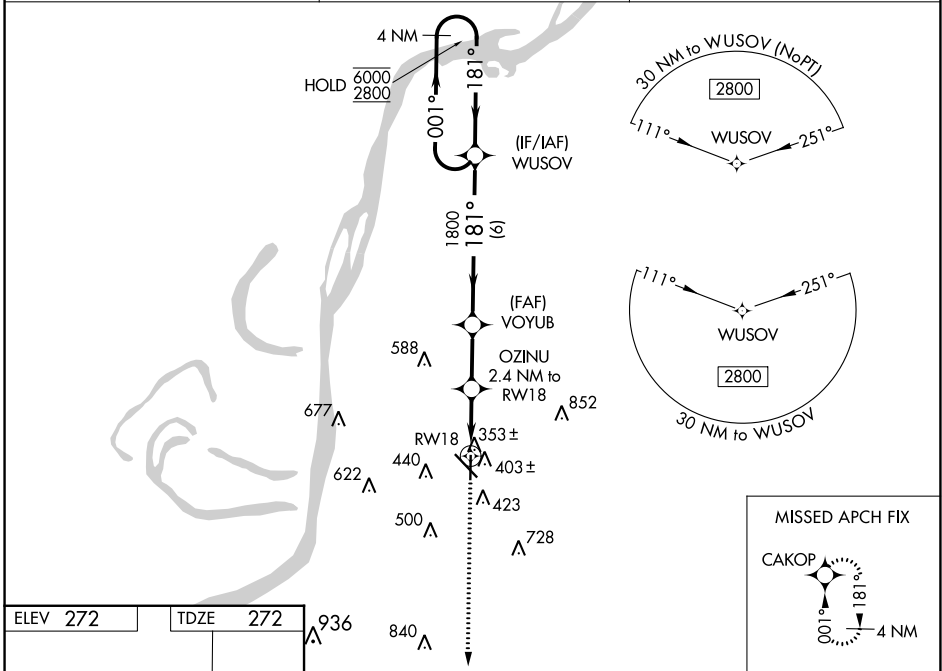
WAAS CH 45734 W18A	APP CRS 181°	Rwy Ldg TDZE Apt Elev	5000 272 272
--	------------------------	-----------------------------	---

RNAV (GPS) RWY 18

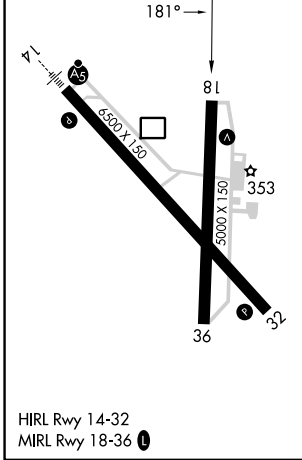
HARDY-ANDERS FLD/NATCHEZ-ADAMS COUNTY (H/E/Z)

RNP APCH.	MISSED APPROACH: Climb to 2800 direct CAKOP and hold.
<p>Circling Rwy 36 NA at night. Rwy 18 helicopter visibility reduction below 3/4 SM NA.</p>	

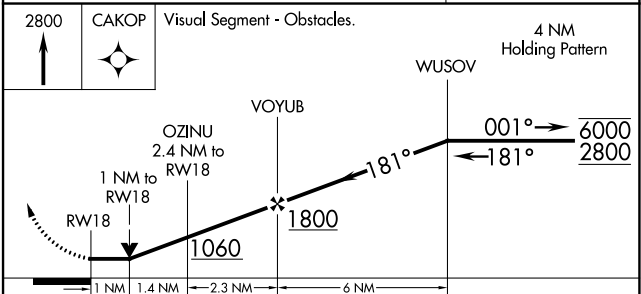
AWOS-3PT 124.675	HOUSTON CENTER 120.975 299.6	UNICOM 122.8 (CTAF) 0
----------------------------	--	---------------------------------



ELEV 272	TDZE 272
----------	----------



NATCHEZ, MISSISSIPPI
Amdt 1C 11AUG22



CATEGORY	A	B	C	D
LP MDA	620-1 348 (400-1)			
LNAV MDA	660-1 388 (400-1)	660-1 388 (400-1 1/2)		
CIRCLING	740-1 468 (500-1)	820-1 548 (600-1)	1020-2 1/4 748 (800-2 1/4)	1220-3 948 (1000-3)

HARDY-ANDERS FLD/NATCHEZ-ADAMS COUNTY (H/E/Z)
31°37'N-91°18'W

RNAV (GPS) RWY 18

SC-4, 13 JUN 2024 to 11 JUL 2024

SC-4, 13 JUN 2024 to 11 JUL 2024