

WAAS CH <b>90334</b> <b>W32A</b>	APP CRS <b>316°</b>	Rwy ldg <b>6500</b> TDZE <b>272</b> Apt Elev <b>272</b>
--	------------------------	---

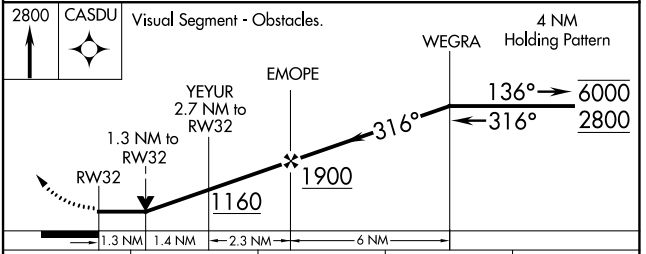
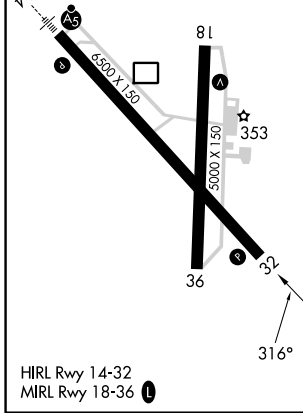
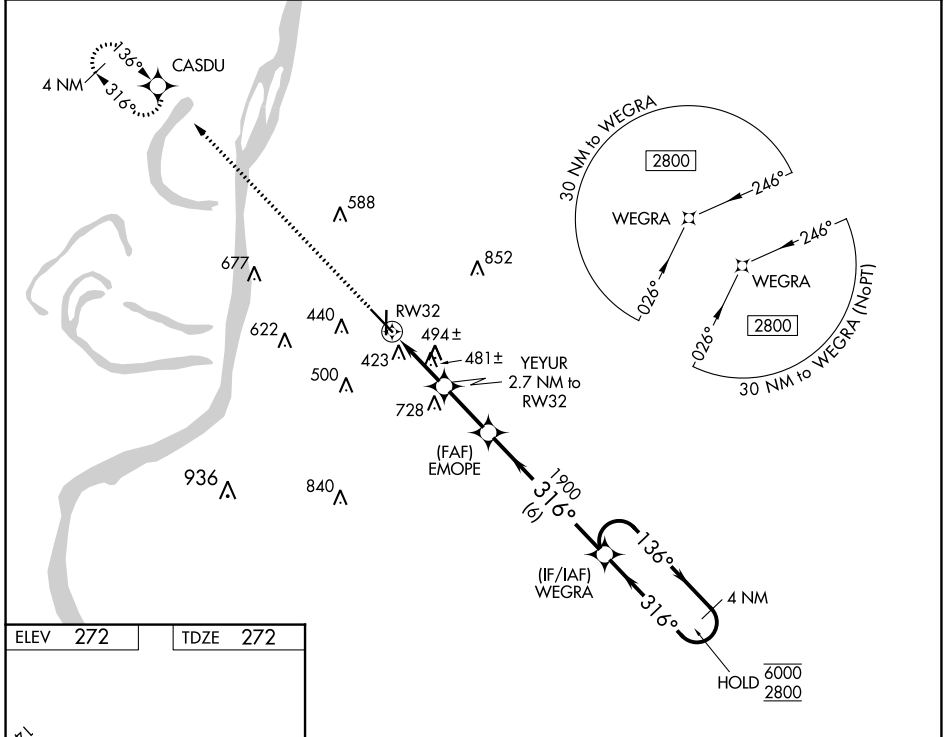
# RNAV (GPS) RWY 32

HARDY-ANDERS FLD/NATCHEZ-ADAMS COUNTY (HE/Z)

RNP APCH - GPS.  
 ⚠ Circling Rwy 36 NA at night.  
 Rwy 32 helicopter visibility reduction below ¾ SM NA.

MISSED APPROACH: Climb to 2800 direct CASDU and hold.

AWOS-3PT <b>124.675</b>	HOUSTON CENTER <b>120.975 299.6</b>	UNICOM <b>122.8 (CTAF) 0</b>
----------------------------	--	---------------------------------



CATEGORY	A	B	C	D
LP MDA	740-1	468 (500-1)	740-1⅜	468 (500-1⅜)
LNNAV MDA	800-1	528 (600-1)	800-1½	528 (600-1½)
<b>C</b> CIRCLING	800-1 528 (600-1)	820-1 548 (600-1)	1020-2¼ 748 (800-2¼)	1220-3 948 (1000-3)

SC-4, 13 JUN 2024 to 11 JUL 2024

SC-4, 13 JUN 2024 to 11 JUL 2024