

WAAS CH 77734 W36A	APP CRS 001°	Rwy Idg TDZE Apt Elev	5000 272 272
--	------------------------	-----------------------------	---

RNAV (GPS) RWY 36

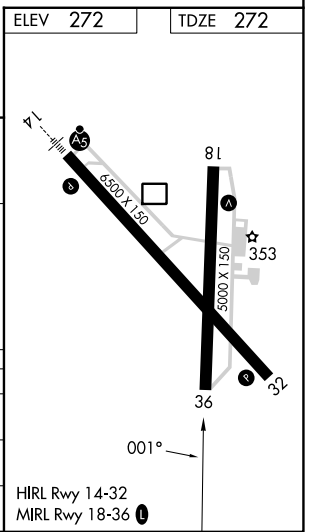
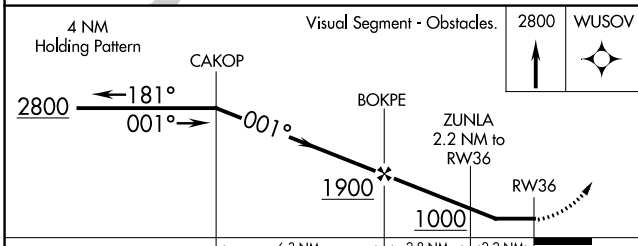
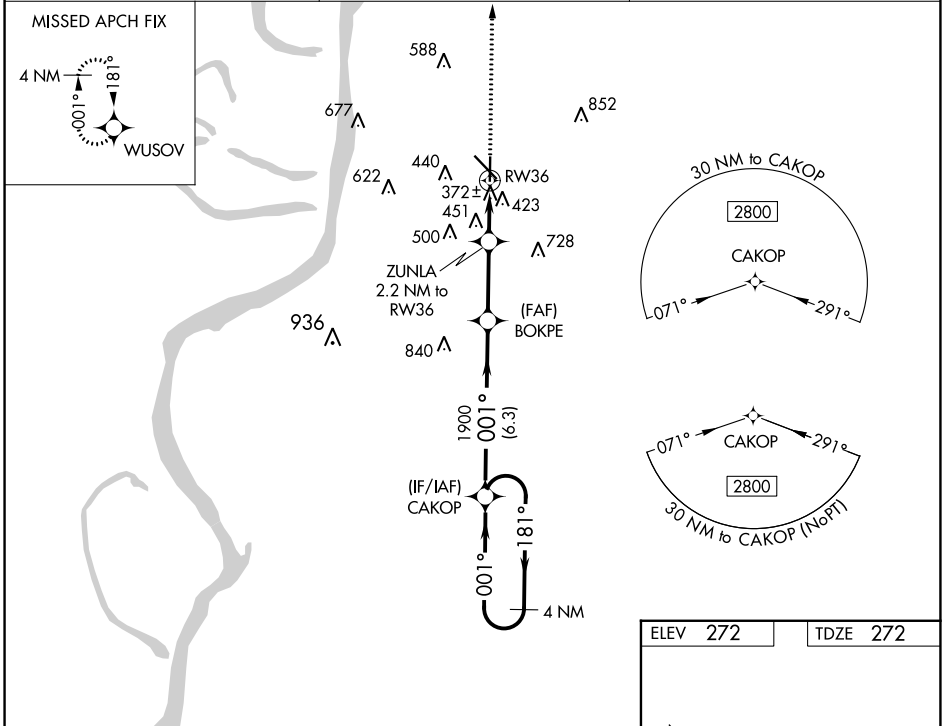
HARDY-ANDERS FLD/NATCHEZ-ADAMS COUNTY (HE/Z)

RNP APCH

▽ When local altimeter setting not received, use Vicksburg Tallulah Rgnl altimeter setting and increase all MDAs 140 feet; increase LP and LNAV Cats C/D visibility $\frac{3}{8}$ SM.
▲ Increase Circling Cats C visibility $\frac{1}{2}$ SM. Rwy 36 helicopter visibility reduction below 1 SM NA. Straight-in Rwy 36 NA at night, Circling Rwy 36 NA at night.

MISSED APPROACH: Climb to 2800 direct WUSOV and hold.

AWOS-3PT 124.675	HOUSTON CENTER 120.975 299.6	UNICOM 122.8 (CTAF) 0
----------------------------	--	---------------------------------



CATEGORY	A	B	C	D
LP MDA	660-1	388 (400-1)	660-1 $\frac{1}{8}$	388 (400-1 $\frac{1}{8}$)
LNAV MDA	720-1	448 (500-1)	720-1 $\frac{3}{8}$	448 (500-1 $\frac{3}{8}$)
C CIRCLING	740-1 468 (500-1)	820-1 548 (600-1)	1020-2 $\frac{1}{4}$ 748 (800-2 $\frac{1}{4}$)	1220-3 948 (1000-3)

SC-4, 13 JUN 2024 to 11 JUL 2024

SC-4, 13 JUN 2024 to 11 JUL 2024