

| | | |
|---|------------------------|---|
| LOC/DME I-RUT 111.7 Chan 54 | APP CRS 194° | Rwy ldg 5003 TDZE 787 Apt Elev 787 |
|---|------------------------|---|

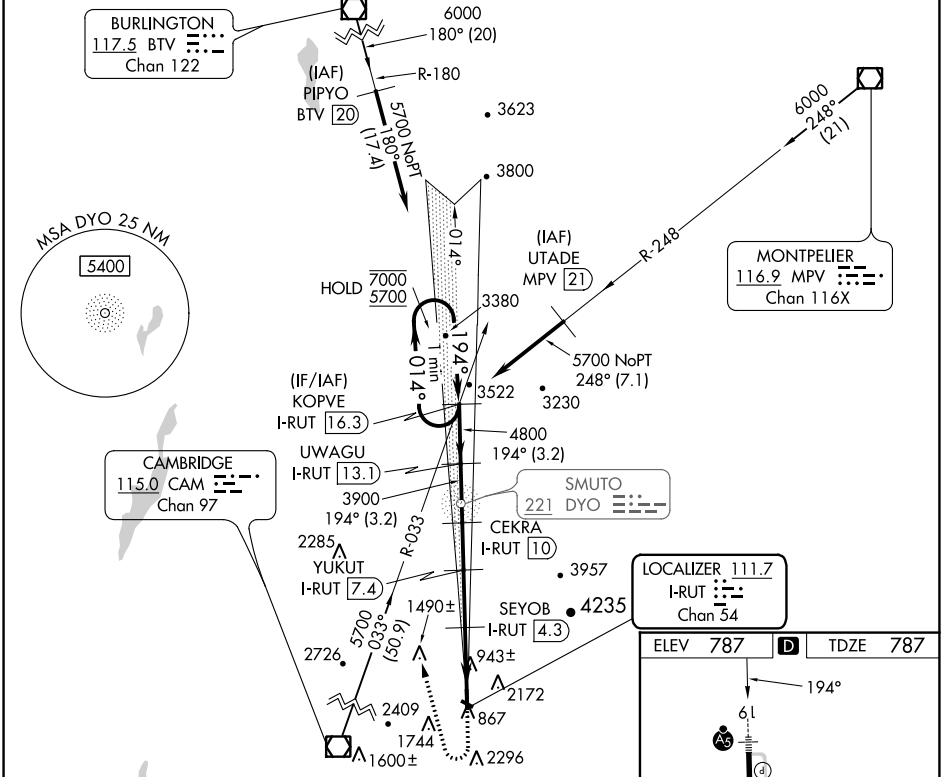
ILS Z or LOC Z RWY 19

RUTLAND/SOUTHERN VERMONT RGNL (RUT)

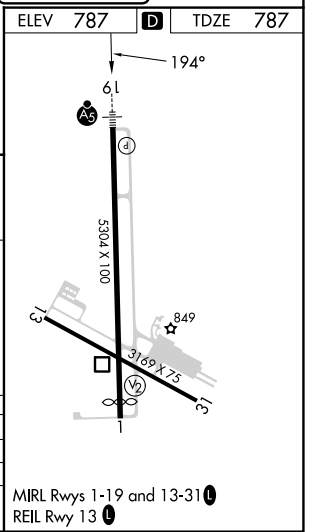
DME required.

MALS R MISSED APPROACH: Climb to 1900 then climbing right turn to 5700 on heading 360° and CAM VOR/DME R-033 to KOPVE/I-RUT 16.31 DME and hold. If unable to meet climb gradient, see ILS Y or LOC Y Rwy 19. # Missed approach requires minimum climb of 425 feet per NM to 3200.

| | | |
|----------------------------|-------------------------------------|-------------------------------|
| AWOS-3PT 118.375 | BOSTON CENTER 135.7 282.2 | UNICOM 122.8 (CTAF) |
|----------------------------|-------------------------------------|-------------------------------|



| | | | | |
|----------------------------|---|---------------------------|-------------------------|-------------------------|
| One Minute Holding Pattern | 1900 | 5700 | CAM R-033 | KOPVE I-RUT 16.3 |
| KOPVE I-RUT 16.3 | UWAGU I-RUT 13.1 | CEKRA I-RUT 10 | YUKUT I-RUT 7.4 | SEYOB I-RUT 4.3 |
| 7000 ← 014° | 5700 → 194° | 4800 → 194° | 3900 → 194° | 3040 → 194° |
| GS 3.20° | TCH 54 | | | |
| | 3.2 NM | 3.2 NM | 2.5 NM | 3.1 NM |
| CATEGORY | A | B | C | D |
| S-ILS 19 # | 1451-1½ 664 (700-1½) | | | |
| S-LOC 19 # | 1520-1½ 733 (800-1½) 1520-1½ 733 (800-1½) | | | |
| CIRCLING | 2160-1¼ 1373 (1400-1¼) | 2160-1½ 1373 (1400-1½) | 2520-3 1733 (1800-3) | 2760-3 1973 (2000-3) |



NE-1, 13 JUN 2024 to 11 JUL 2024

NE-1, 13 JUN 2024 to 11 JUL 2024