

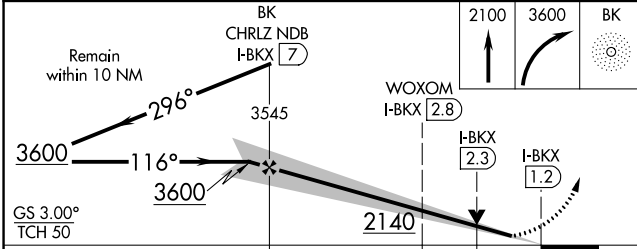
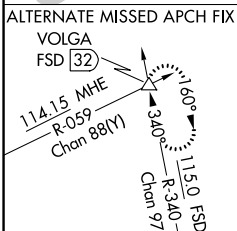
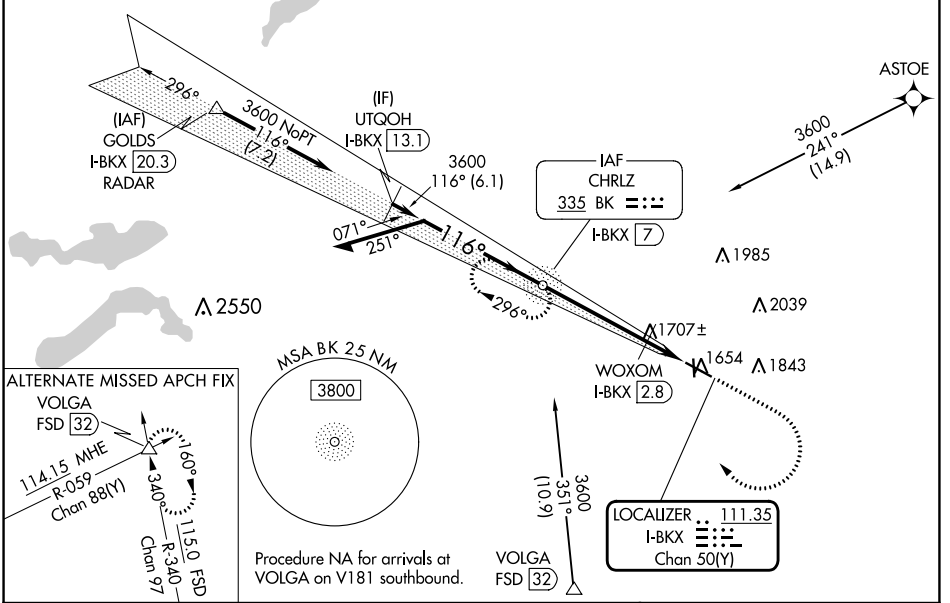
| | | |
|--|------------------------|---|
| LOC/DME I-BKX 111.35 Chan 50(Y) | APP CRS 116° | Rwy Idg 6000 TDZE 1621 Apt Elev 1648 |
|--|------------------------|---|

ILS or LOC RWY 12

BROOKINGS RGNL (BKX)

| | | | |
|--|--|-----------|---|
| DME required. ADF required. From ASTOE: RNAV 1-GPS required. | | MALSR | MISSED APPROACH: Climb to 2100 then climbing right turn to 3600 direct BK NDB and hold, continue climb-in hold to 3600. |
| <p>NA Circling Rwy 17 NA at night. VDP NA when using Pipestone Muni altimeter setting. For inop ALS, increase S-LOC 12 Cats C/D visibility to 1 3/8 SM. For inop ALS when using WOXOM fix minimums, increase S-LOC 12 Cat C/D visibility to 1 SM.</p> | | | |

| | | | |
|----------------------------|---|-----------------------|-------------------------------|
| AWOS-3PT 119.925 | MINNEAPOLIS CENTER 132.05 317.4 | GCO 121.725 | UNICOM 123.0 (CTAF) |
|----------------------------|---|-----------------------|-------------------------------|



| | |
|--|--------------------------|
| ELEV 1648 | D TDZE 1621 |
| | |
| HIRL Rwy 12-30 MIRL Rwy 17-35 REIL Rws 17, 30, and 35 FAF to MAP 5.9 NM | |
| Knots | 60 90 120 150 180 |
| Min:Sec | 5:54 3:56 2:57 2:22 1:58 |

| CATEGORY | A | B | C | D |
|--------------------|-----------------------|-----------------------|-----------------------|-------------------------------|
| S-ILS 12 | | 1821-1/2 | 200 (200-1/2) | |
| S-LOC 12 | 2140-1/2 | 519 (500-1/2) | 2140-1 | 519 (500-1) |
| C CIRCLING | 2140-1 492 (500-1) | 2160-1 512 (600-1) | 2340-2 692 (700-2) | 2340-2 1/4 692 (700-2 1/4) |
| WOXOM FIX MINIMUMS | | | | |
| S-LOC 12 | 2000-1/2 | 379 (400-1/2) | 2000-5/8 | 379 (400-5/8) |
| C CIRCLING | 2140-1 492 (500-1) | 2160-1 512 (600-1) | 2340-2 692 (700-2) | 2340-2 1/4 692 (700-2 1/4) |

NC-1, 13 JUN 2024 to 11 JUL 2024

NC-1, 13 JUN 2024 to 11 JUL 2024