

WAAS CH 45505 W26A	APP CRS 264°	Rwy Idg TDZE Apt Elev	5500 671 672
--	------------------------	-----------------------------	---


RNAV (GPS) RWY 26

KEOKUK MUNI (EOK)

RNP APCH - GPS.

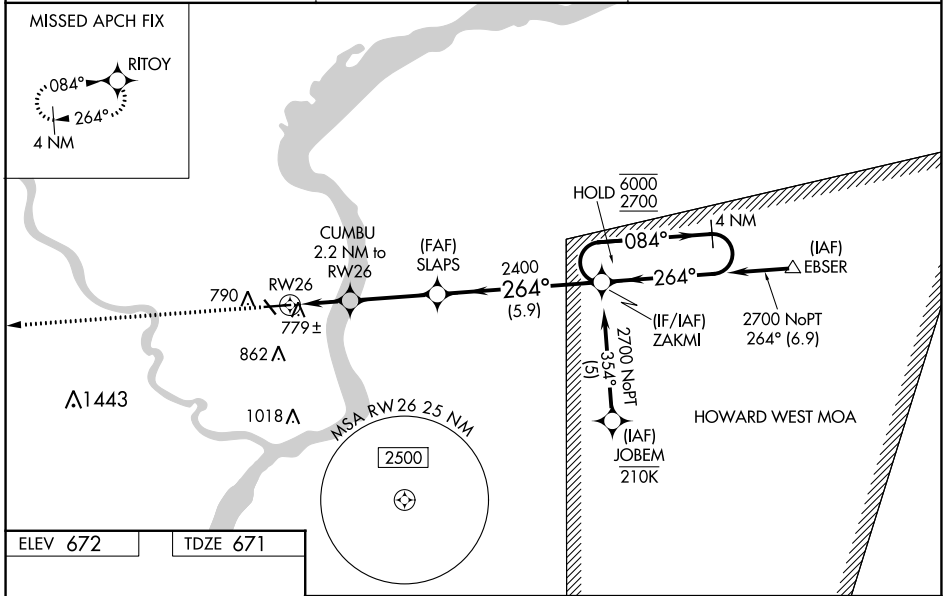
⚠ Circling Rwy 32 NA at night. Baro-VNAV and VDP NA when using Burlington altimeter setting. Inop table does not apply to LPV. For uncompensated Baro-VNAV systems, LNAV/VNAV NA below -21°C or above 54°C. When local altimeter setting not received, use Burlington altimeter setting and increase LPV DA to 927 feet, increase LNAV/VNAV DA to 1005 feet, increase all MDAs 60 feet, and Circling visibility Cat C ¼ SM. For inop ALS, increase LNAV/VNAV all Cats visibility to ¾ SM and LNAV all Cats visibility to 1 SM. For inop ALS, when using Burlington altimeter setting, increase LNAV/VNAV all Cats and LNAV Cats A and B visibility to 1 SM.

MALSR

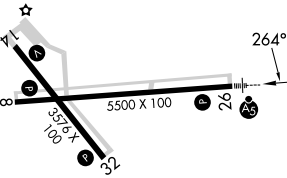


MISSED APPROACH:
Climb to 2700 direct RIT0Y and hold.

AWOS-3 118.375	KANSAS CITY CENTER 126.225 317.775	UNICOM 122.8 (CTAF) 0
--------------------------	--	--

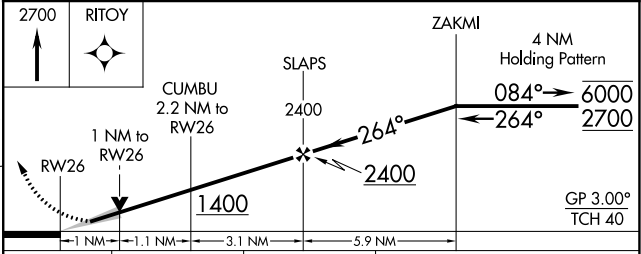


ELEV 672 TDZE 671



REIL Rwy 8, 14, and 32 **0**

MIRL Rwy 8-26 and 14-32 **0**



CATEGORY	A	B	C	D
LPV DA		871-¾ 200 (200-¾)		NA
LNAV/VNAV DA		949-¾ 278 (300-¾)		NA
LNAV MDA		1040-¾ 369 (400-¾)		NA
CIRCLING	1180-1 508 (600-1)	1220-1 548 (600-1)	1220-1½ 548 (600-1½)	NA

NC-3, 13 JUN 2024 to 11 JUL 2024

NC-3, 13 JUN 2024 to 11 JUL 2024