

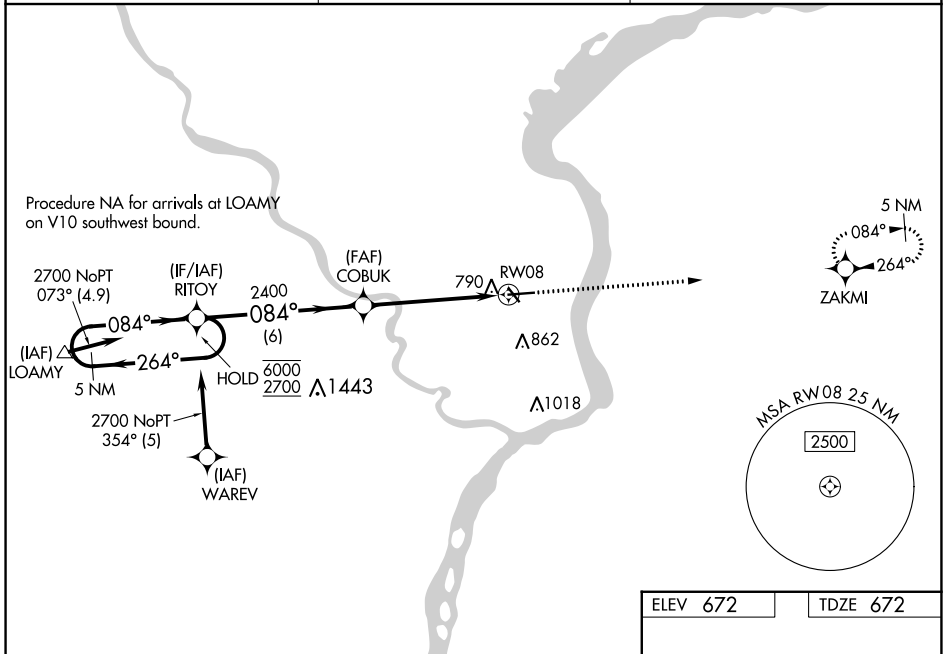
WAAS CH <b>97304</b> <b>W08A</b>	APP CRS <b>084°</b>	Rwy Idg TDZE <b>672</b> Apt Elev <b>672</b>
----------------------------------------	------------------------	---------------------------------------------------

# RNAV (GPS) RWY 8

KEOKUK MUNI (EOK)

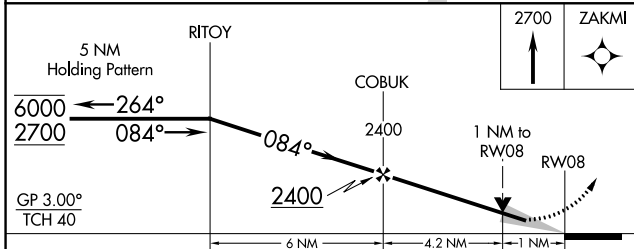
RNP APCH - GPS.	MISSED APPROACH: Climb to 2700 direct ZAKMI and hold.
<p><b>⚠</b> Circling to Rwy 32 NA at night. Baro-VNAV and VDP NA when using Burlington altimeter setting. For uncompensated Baro-VNAV systems, LNAV/VNAV NA below -16°C or above 54°C. When local altimeter setting not received, use Burlington altimeter setting: increase LPV DA to 978 feet; LNAV/VNAV DA to 1116; increase all MDAs 60 feet and visibility Cat C ¼ SM.</p>	

AWOS-3 <b>118.375</b>	KANSAS CITY CENTER <b>126.225 317.775</b>	UNICOM <b>122.8 (CTAF) 0</b>
--------------------------	----------------------------------------------	---------------------------------

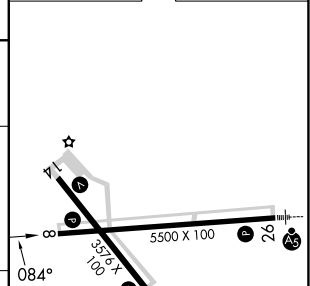


NC-3, 13 JUN 2024 to 11 JUL 2024

NC-3, 13 JUN 2024 to 11 JUL 2024



ELEV 672	TDZE 672
----------	----------



CATEGORY	A	B	C	D
LPV DA	922-1 250 (300-1)			NA
LNAV/VNAV DA	1060-1½ 388 (400-1½)			NA
LNAV MDA	1040-1 368 (400-1)			NA
CIRCLING	1180-1 508 (600-1)	1220-1 548 (600-1)	1220-1½ 548 (600-1½)	NA

REIL Rwy 8, 14, and 32 0
MIRL Rwy 8-26 and 14-32 0