


LOC I-GNV 111.3	APP CRS 286°	Rwy ldg 7504 TDZE 122 Apt Elev 151
---------------------------	------------------------	---

ILS or LOC RWY 29

GAINESVILLE RGNL (GNV)

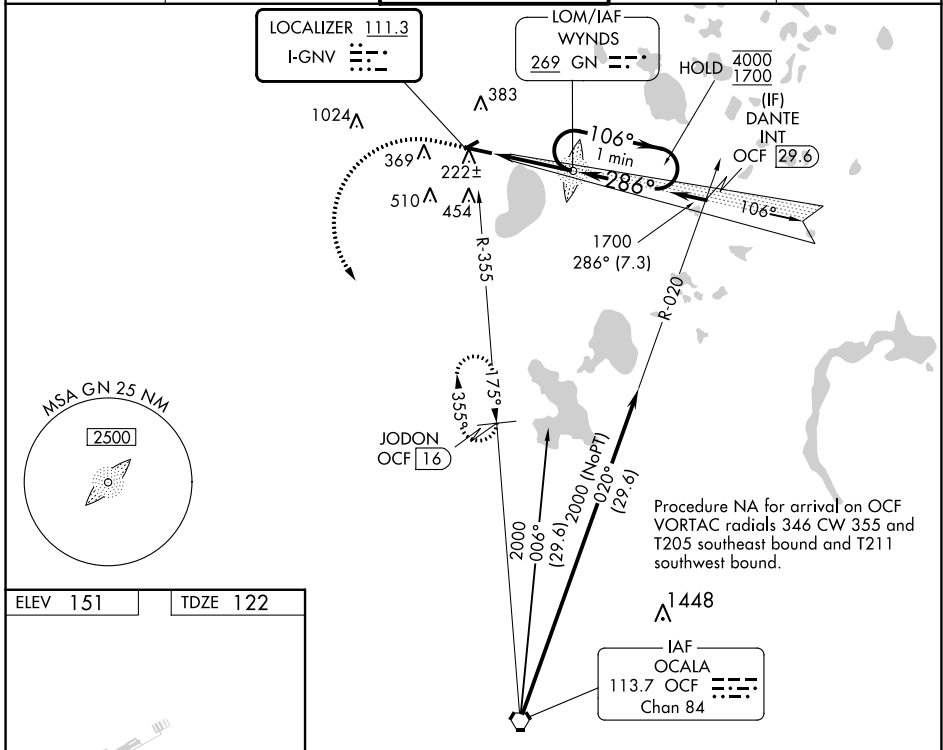
DME required.

⚠ When local altimeter setting not received, use Ocala altimeter setting and increase all DA 81 feet and all MDA 100 feet. Increase S-LOC 29 Cat C and D visibility to RVR 6000, Circling Cat C to 2 SM and Cat D to 2½ SM. For inop ALS when using Ocala altimeter setting, increase S-ILS 29 all Cats visibility to RVR 4500. ** RVR 1800 authorized with use of FD or AP or HUD to DA (NA when using Ocala altimeter setting.)

MALSR 

MISSED APPROACH: Climb to 1100 then climbing left turn to 2000 on heading 160° and OCF VORTAC R-355 to JODON/16 DME and hold.

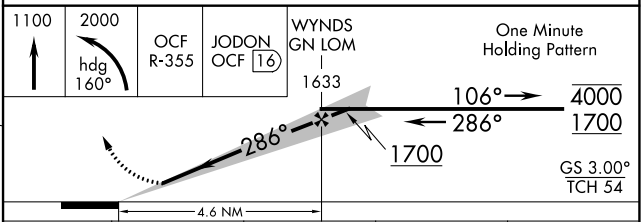
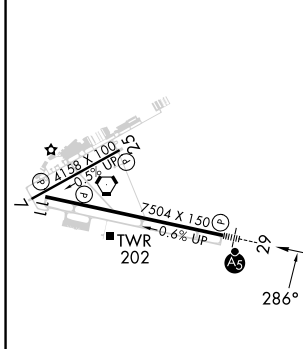
ATIS 127.15	JACKSONVILLE APP CON 118.175 338.25	GAINESVILLE TOWER★ 119.55 (CTAF) 0 353.7	GND CON 121.7	UNICOM 122.95
-----------------------	---	--	-------------------------	-------------------------



SE-3, 13 JUN 2024 to 11 JUL 2024

SE-3, 13 JUN 2024 to 11 JUL 2024

ELEV 151	TDZE 122
----------	----------



CATEGORY	A	B	C	D
S-ILS 29**	322/24 200 (200-½)			
S-LOC 29	580/24	458 (500-½)	580/45	458 (500-¾)
<input checked="" type="checkbox"/> CIRCLING	620-1 469 (500-1)	700-1 549 (600-1)	760-1¾ 609 (700-1¾)	820-2 669 (700-2)