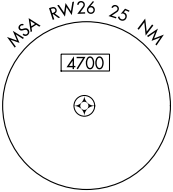


WAAS CH <b>42835</b>	APP CRS <b>259°</b>	Rwy Idg TDZE <b>1159</b>	<b>5791</b>
<b>W26A</b>		Apt Elev <b>1188</b>	

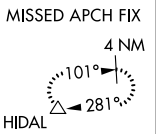
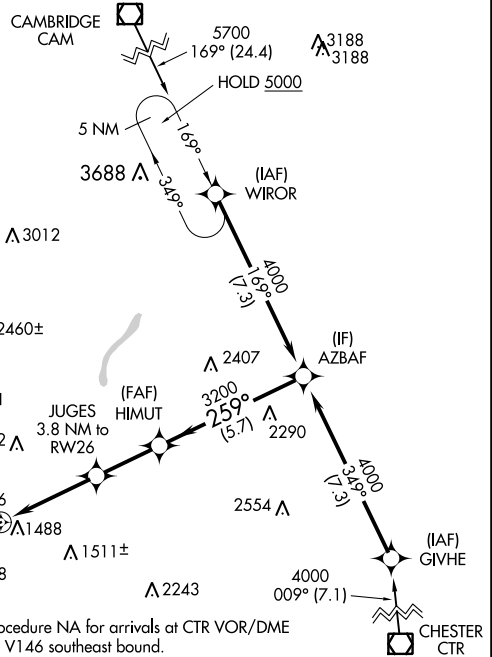
# RNAV (GPS) RWY 26

PITTSFIELD MUNI (PSF)

RNP APCH - GPS.		MISSED APPROACH: Climb to 2800 then climbing left turn to 4000 direct HIDL and hold.	
<p>▼ Circling NA south of Rwy 8 and southwest of Rwy 32. ▲ For uncompensated Baro-VNAV systems, LNAV/VNAV NA below -21°C or above 54°C.</p>		<p>* Missed approach requires minimum climb of 285 feet per NM to 2700.</p>	
ASOS <b>135.375</b>	ALBANY APP CON <b>132.825 307.2</b>	CLNC DEL <b>128.6</b>	UNICOM <b>122.7 (CTAF) 0</b>

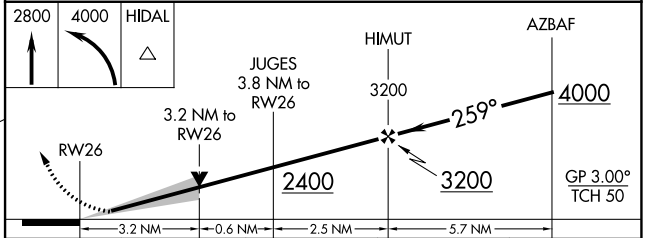
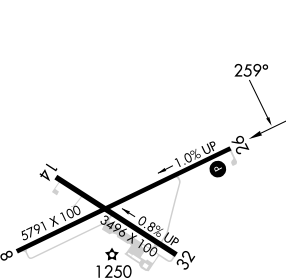


Procedure NA for arrival on CAM VOR/DME  
airway radials 108 CW 248.



Procedure NA for arrivals at CTR VOR/DME on V146 southeast bound.

ELEV 1188	TDZE 1159
-----------	-----------



CATEGORY	A	B	C	D
LPV DA*	1409-1		250 (300-1)	
LPV DA	1678-1 $\frac{3}{8}$		519 (500-1 $\frac{3}{8}$ )	
LNAV/VNAV DA	1911-2		752 (800-2)	
LNAV MDA	2220-1 $\frac{1}{4}$ 1061 (1100-1 $\frac{1}{2}$ )	2220-1 $\frac{1}{2}$ 1061 (1100-1 $\frac{1}{2}$ )	2220-3	1061 (1100-3)
CIRCLING	2220-1 $\frac{1}{4}$ 1032 (1100-1 $\frac{1}{4}$ )	2220-1 $\frac{1}{2}$ 1032 (1100-1 $\frac{1}{2}$ )	2400-3 1212 (1300-3)	2680-3 1492 (1500-3)

REIL Rwy 26  
MIRL Rwy 8-26 and 14-32

NE-1, 13 JUN 2024 to 11 JUL 2024

NE-1, 13 JUN 2024 to 11 JUL 2024