

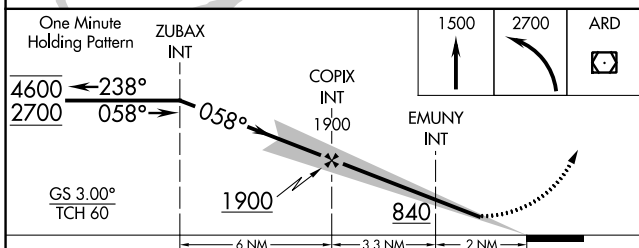
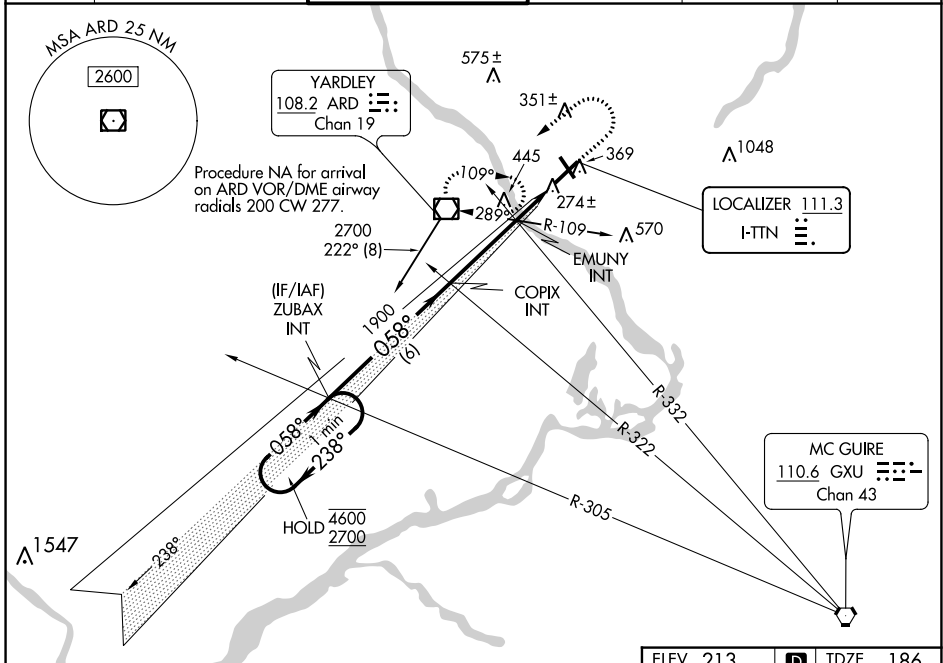
LOC I-TTN <b>111.3</b>	APP CRS <b>058°</b>	Rwy Idg <b>6006</b>
		TDZE <b>186</b>
		Apt Elev <b>213</b>

# ILS or LOC RWY 6

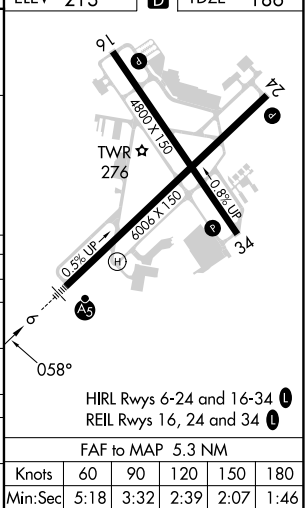
TRENTON MERCER (TTN)

<p><b>▼</b> When Circling to Rwy 34 at night, operational VGSI required, remain on or above VGSI glidepath until lateral threshold. For inop ALS, increase EMUNY fix minimums S-LOC 6 Cat C/D visibility to 1 SM.</p> <p><b>▲</b></p>	<p>MALSR</p>	<p>MISSED APPROACH: Climb to 1500 then climbing left turn to 2700 direct ARD VOR/DME and hold.</p>
---	--------------	--

ATIS <b>126.775</b>	PHILADELPHIA APP CON <b>123.8 291.7</b>	TRENTON TOWER ★ <b>120.7 (CTAF) 257.8</b>	GND CON <b>121.9 257.8</b>	CLNC DEL <b>121.9 257.8</b>	UNICOM <b>122.95</b>
------------------------	--	--	-------------------------------	--------------------------------	-------------------------



ELEV 213	D	TDZE 186
----------	---	----------



CATEGORY	A	B	C	D
S-ILS 6	414-½ 228 (300-½)			
S-LOC 6	840-½	654 (700-½)	840-1¾	654 (700-1¾)
<b>C</b> CIRCLING	840-1	627 (700-1)	840-1¾	960-2½
EMUNY FIX MINIMUMS (DUAL VOR RECEIVERS REQUIRED)				
S-LOC 6	540-½	354 (400-½)	540-5/8	354 (400-5/8)
<b>C</b> CIRCLING	680-1	467 (500-1)	760-1½	960-2½
			547 (600-1½)	747 (800-2½)

HIRL Rwys 6-24 and 16-34					
REIL Rwys 16, 24 and 34					
FAF to MAP 5.3 NM					
Knots	60	90	120	150	180
Min:Sec	5:18	3:32	2:39	2:07	1:46

NE-2, 13 JUN 2024 to 11 JUL 2024

NE-2, 13 JUN 2024 to 11 JUL 2024