

WAAS CH <b>99330</b> <b>W16A</b>	APP CRS <b>158°</b>	Rwy Idg TDZE Apt Elev	<b>4800</b> <b>213</b> <b>213</b>
--	------------------------	-----------------------------	---

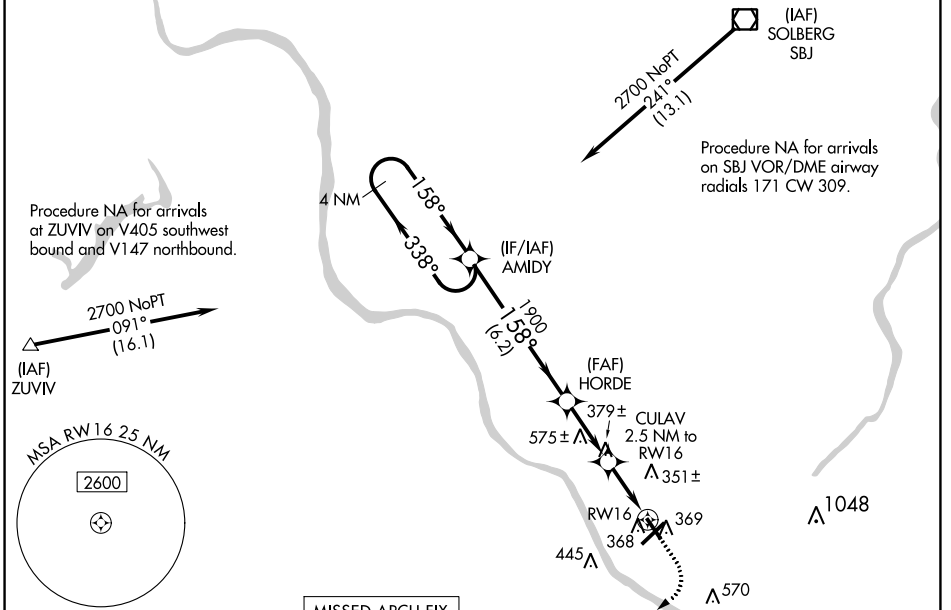
# RNAV (GPS) RWY 16

TRENTON MERCER (TTN)

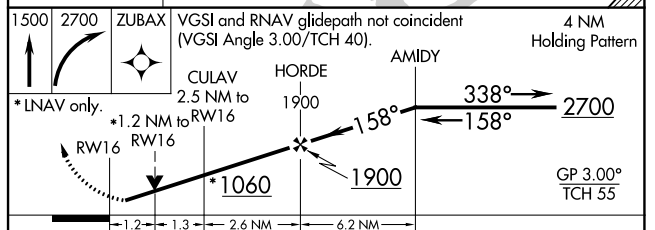
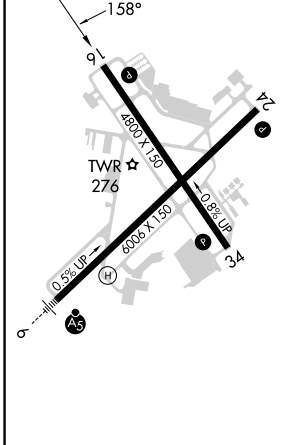
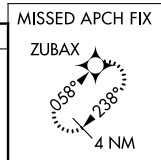
▼ Night Landing: Rwy 34 operational VGSI required, remain on or above VGSI glidepath until threshold. Baro-VNAV NA when using Northeast Philadelphia altimeter setting. For uncompensated Baro-VNAV systems, LNAV/VNAV NA below -1.5°C (5°F) or above 54°C (130°F). DME/DME RNP-0.3 NA.  
 ▲ Helicopter visibility reduction below ¾ SM NA. When local altimeter setting not received use Northeast Philadelphia altimeter setting; increase LPV DA to 510 feet and all Cats visibility: ¾ SM, LNAV/VNAV DA to 576 feet; increase all MDA 60 feet and LNAV Cat C/D visibility ½ SM and Circling Cat C visibility ½ SM.

MISSED APPROACH:  
Climb to 1500 then climbing right turn to 2700 direct ZUBAX and hold.

ATIS <b>126.775</b>	PHILADELPHIA APP CON <b>123.8 291.7</b>	TRENTON TOWER ★ <b>120.7 (CTAF) 0 257.8</b>	GND CON <b>121.9 257.8</b>	CLNC DEL <b>121.9 257.8</b>	UNICOM <b>122.95</b>
------------------------	--	--	-------------------------------	--------------------------------	-------------------------



ELEV <b>213</b>	<b>D</b>	TDZE <b>213</b>
-----------------	----------	-----------------



CATEGORY	A	B	C	D
LPV DA	463-¾ 250 (300-¾)			
LNAV/VNAV DA	529-1 316 (400-1)			
LNAV MDA	640-1	427 (500-1)	640-1¼ 427 (500-1¼)	960-2½
CIRCLING	680-1	467 (500-1)	547 (600-1½)	747 (800-2½)

HIRL Rwy 6-24 and 16-34  
REIL Rwy 16, 24 and 34

NE-2, 13 JUN 2024 to 11 JUL 2024

NE-2, 13 JUN 2024 to 11 JUL 2024